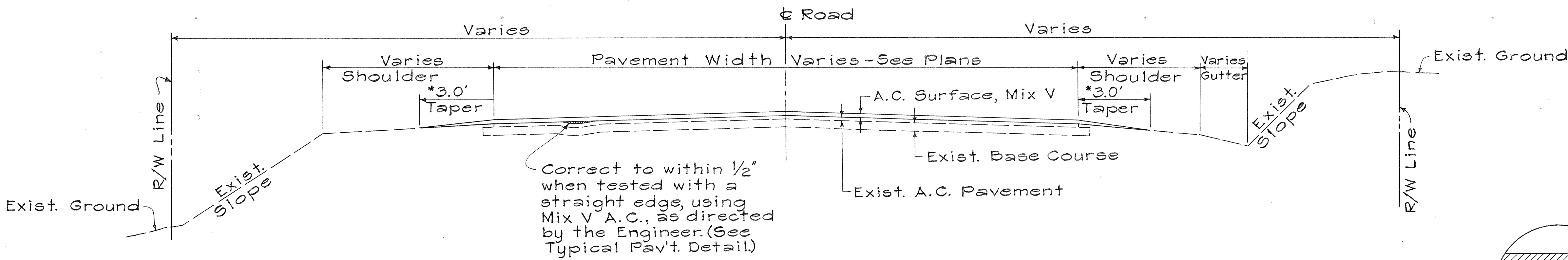


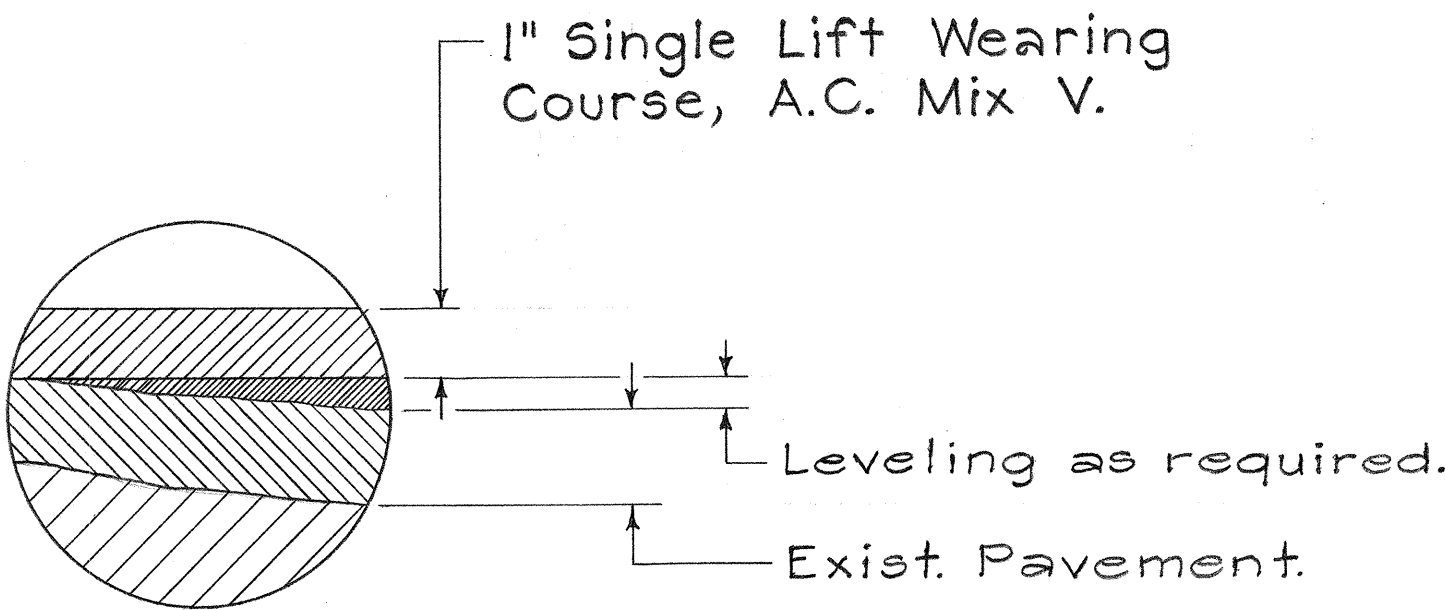
FED. ROAD DIST. NO.	STATE	PROJ. NO.	FISCAL YEAR	SHEET NO.	TOTAL SHEETS
HAWAII	HAW.		1977	3	12

11MN-01-77M
200E-01-77M
270B-01-77M

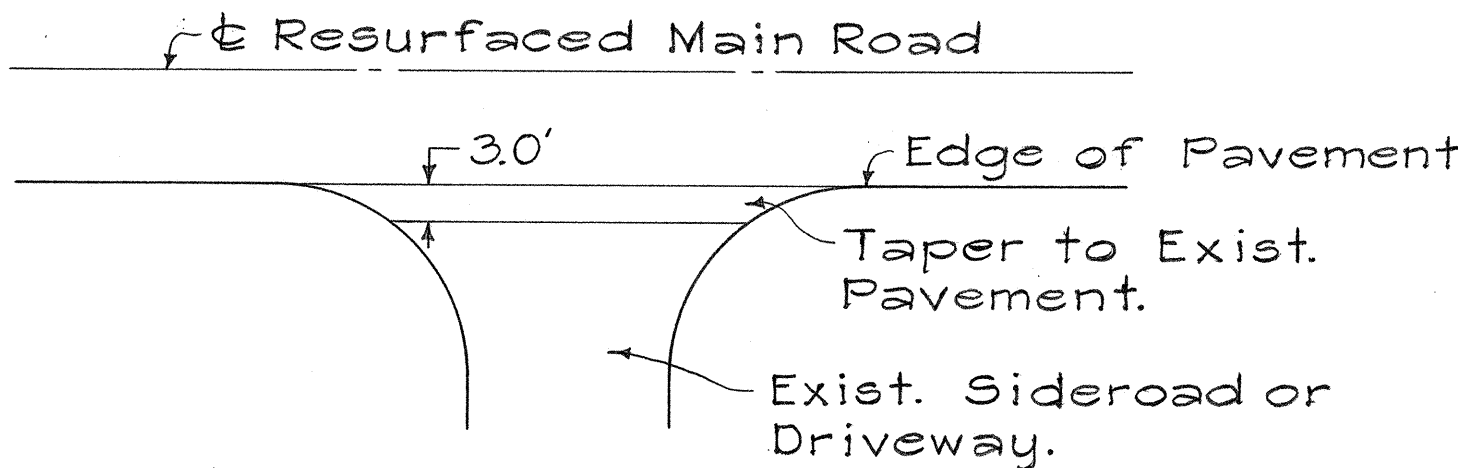


* 2.0' on Proj. No. 200E-01-77M

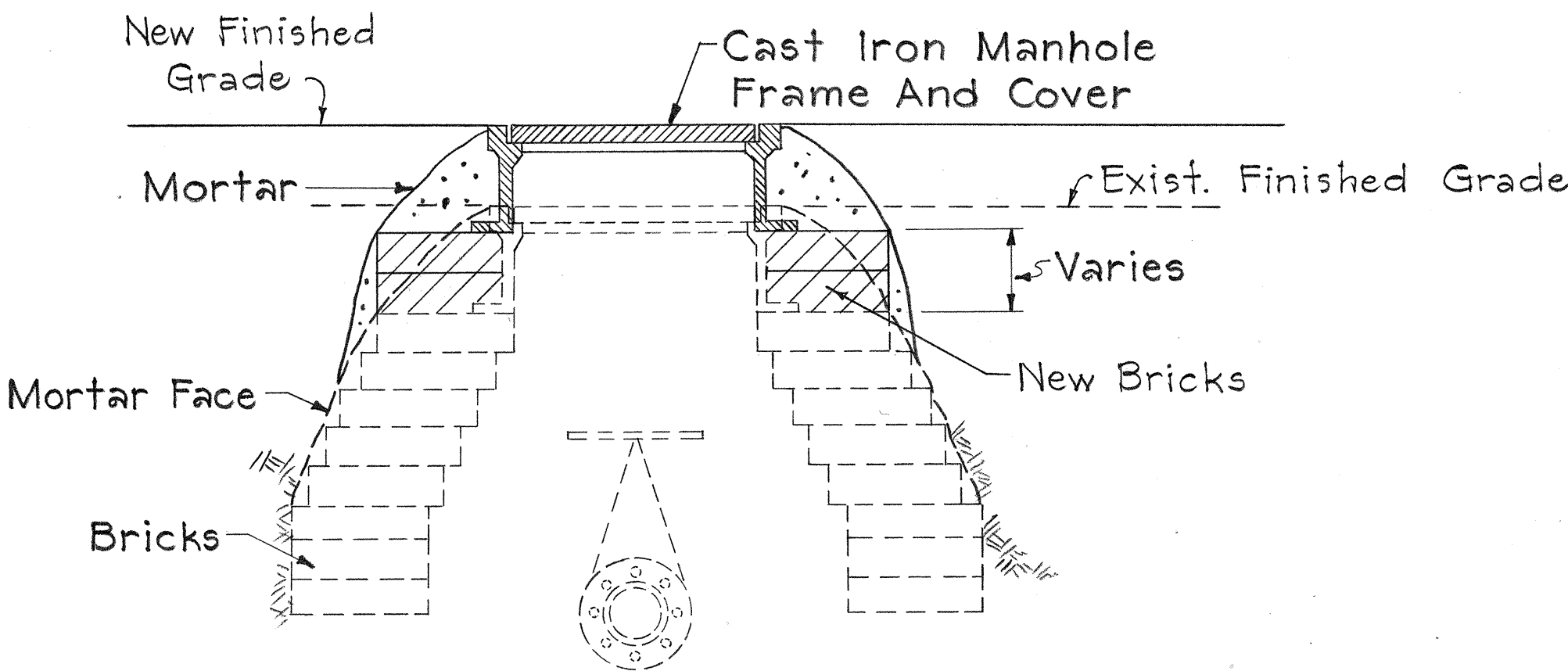
TYPICAL SECTION
Not To Scale



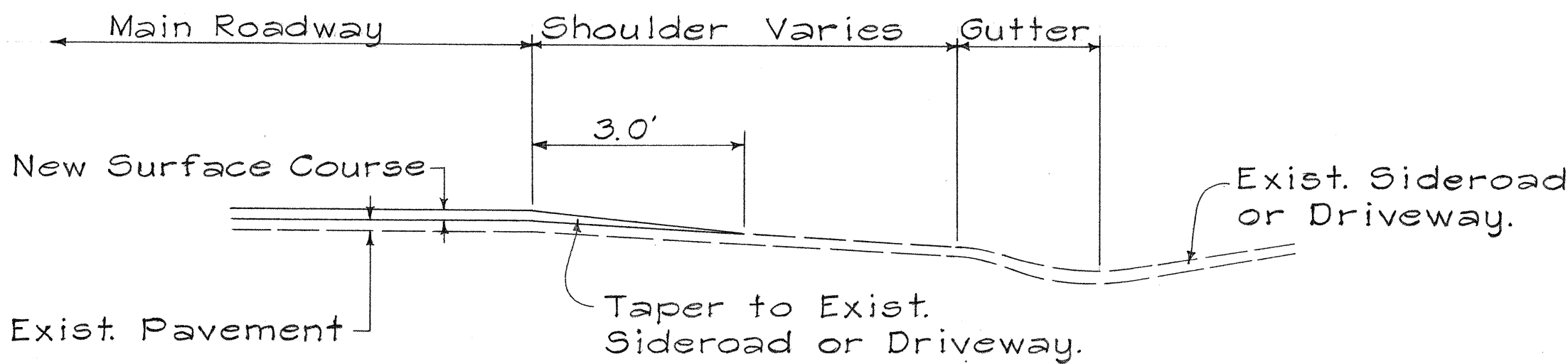
TYPICAL PAVEMENT DETAIL
Not To Scale



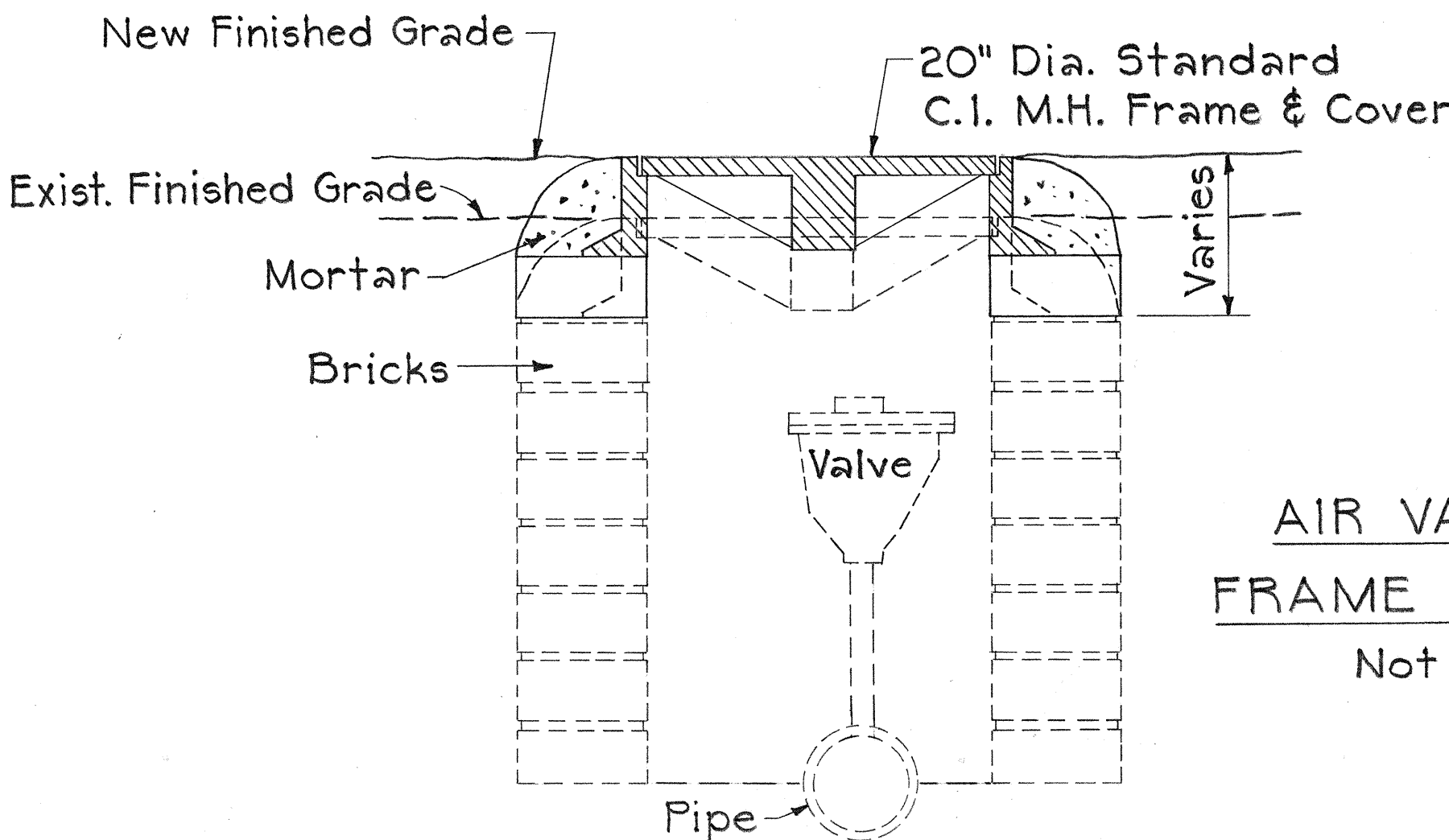
**TYPICAL PLAN-SIDEROAD
& DRIVEWAY CONNECTION**
Not To Scale



**CAST IRON VALVE BOX
FRAME AND COVER**
Not To Scale



**TYPICAL SECTION-SIDEROAD
& DRIVEWAY CONNECTION**
Not To Scale



**AIR VALVE BOX
FRAME AND COVER**
Not To Scale

GENERAL NOTES:

- Existing pavement surface variable. Surface indicated here is not intended to represent any specific location.
- Wherever a definite widening of the existing pavement is evident on curved sections of the highway, resurfacing shall be carried to the limits of the pavement utilizing either full depth pavement or tapers as necessary.
- For Project No. 11MN-01-77M, leveling course shall be laid with a grader prior to placing A. C. Mix V Surface Course and/or as directed in the field by the Engineer.
- Centerline striping to be done by others.
- All Centerline and Reference Monuments to be referenced by others.

STATE OF HAWAII
DEPARTMENT OF TRANSPORTATION
HIGHWAYS DIVISION

TYPICAL DETAILS

PROJ. NO. 11MN-01-77M
PROJ. NO. 200E-01-77M
PROJ. NO. 270B-01-77M

Scale: As Noted. Date: Aug. 6, 1976
SHEET No. 1 OF 1 SHEETS

SURVEY PLOTTED BY	DATE
DRAWN BY	
TRACED BY	
CHECKED BY	
ORIGINAL PLAN	
NOTE BOOK	
No.	