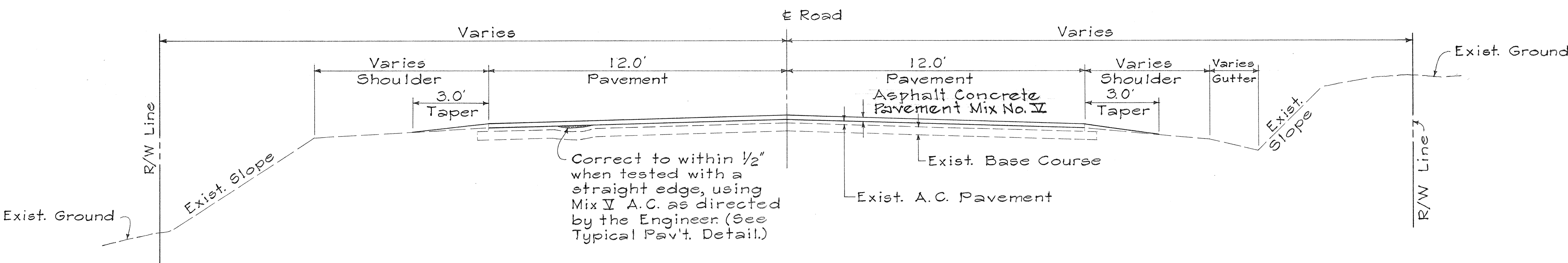
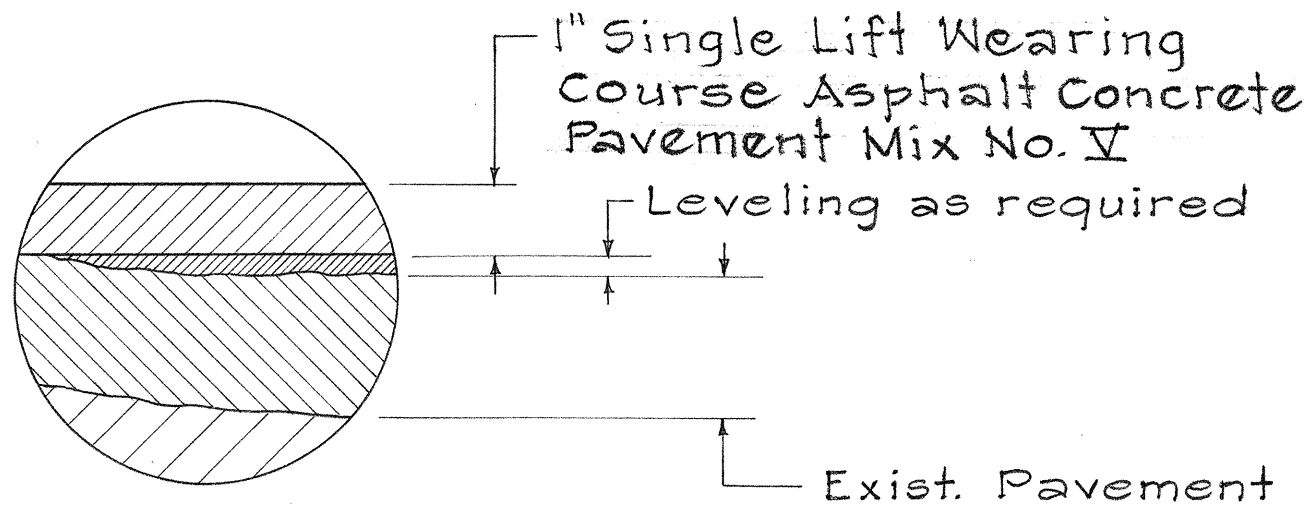


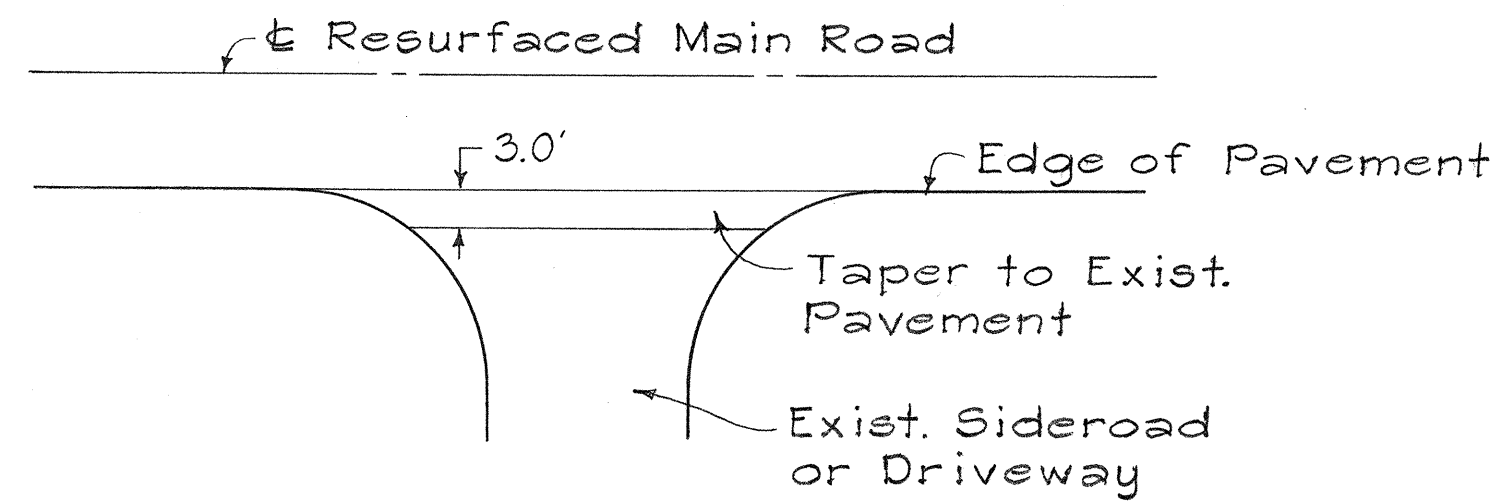
FED. ROAD DIST. NO.	STATE	PROJ. NO.	FISCAL YEAR	SHEET NO.	TOTAL SHEETS
HAWAII	HAW.	11L-01-70M 19C-01-70M	1976	2	8



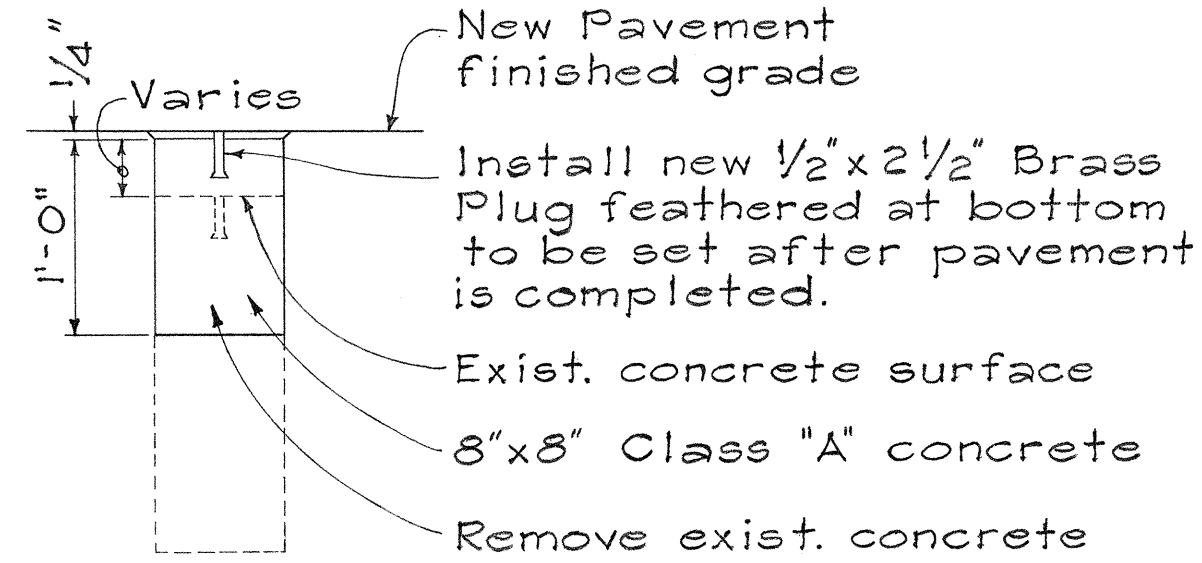
TYPICAL SECTION  
Not To Scale



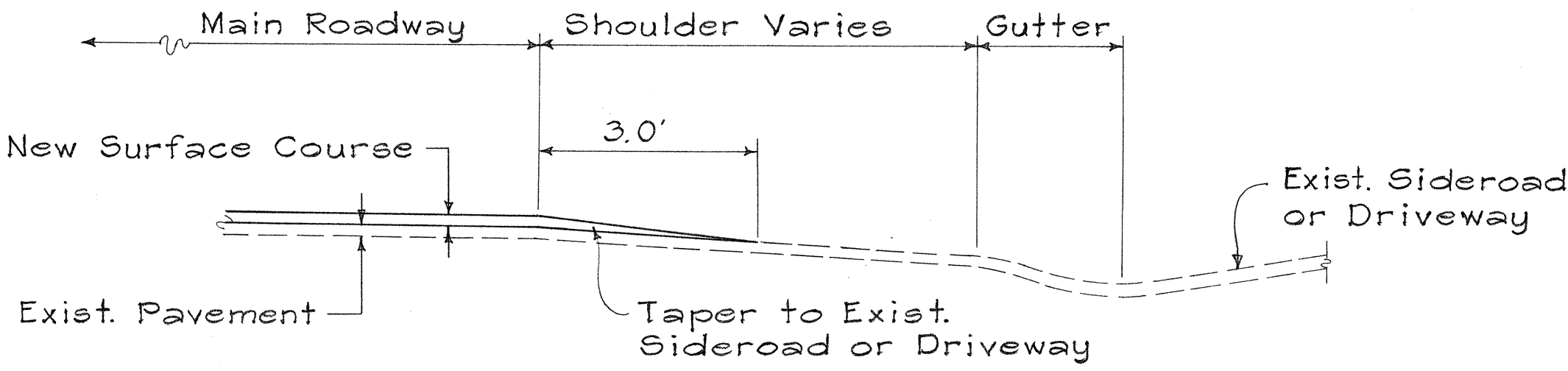
TYPICAL PAVEMENT DETAIL  
Not To Scale



TYPICAL PLAN-SIDEROAD & DRIVEWAY CONNECTION  
Not To Scale



DETAIL FOR RECONSTRUCTED & REFERENCE SURVEY MONUMENT  
Not To Scale



TYPICAL SECTION-SIDEROAD & DRIVEWAY CONNECTION  
Not To Scale

- GENERAL NOTES:
- Existing pavement surface variable. Surface indicated here is not intended to represent any specific location.
  - Wherever a definite widening of the existing pavement is evident on curved sections of the highway, resurfacing shall be carried to the limits of the pavement utilizing either full depth pavement or tapers as necessary.
  - Centerline striping to be done by others.
  - All Centerline and Reference Monuments to be referenced by others.

ORIGINAL PLAN	SURVEY PLOTTED BY	DATE
NOTE BOOK	DRAWN BY	
DESIGNED BY	DESIGNED BY	
QUANTITIES BY	QUANTITIES BY	
CHECKED BY	CHECKED BY	
NO.		

STATE OF HAWAII  
DEPARTMENT OF TRANSPORTATION  
HIGHWAYS DIVISION

TYPICAL DETAILS

PROJECT NO. 11L-01-70M  
PROJECT NO. 19C-01-70M  
Scale: As Noted

SHEET No. 1 OF 1 SHEETS