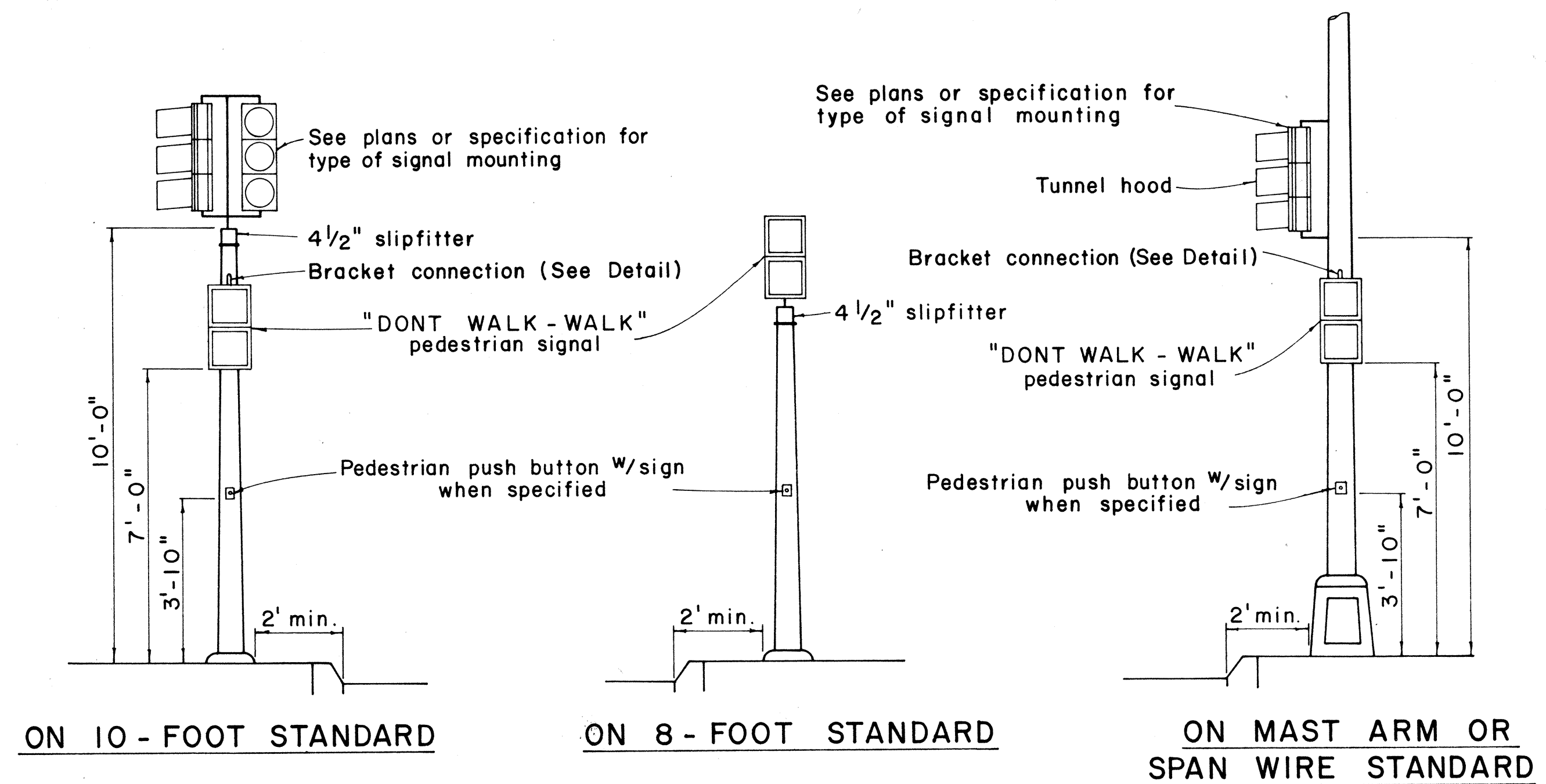
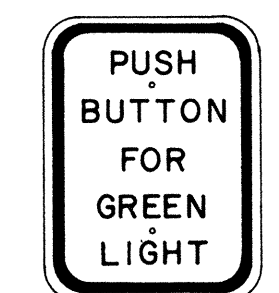


DIST. NO.	STATE	PROJ. NO.	FISCAL YEAR	SHEET NO.	TOTAL SHEETS
HAWAII	HAW.	IIP-01-70(R)	1969	4	7

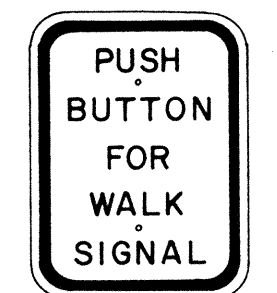


TYPICAL EQUIPMENT MOUNTINGS

TRAFFIC SIGN AS SPECIFIED IN PLAN
 1. "PUSH BUTTON FOR GREEN LIGHT" (R9-6)
 2. "PUSH BUTTON FOR WALK SIGNAL" (R9-7)

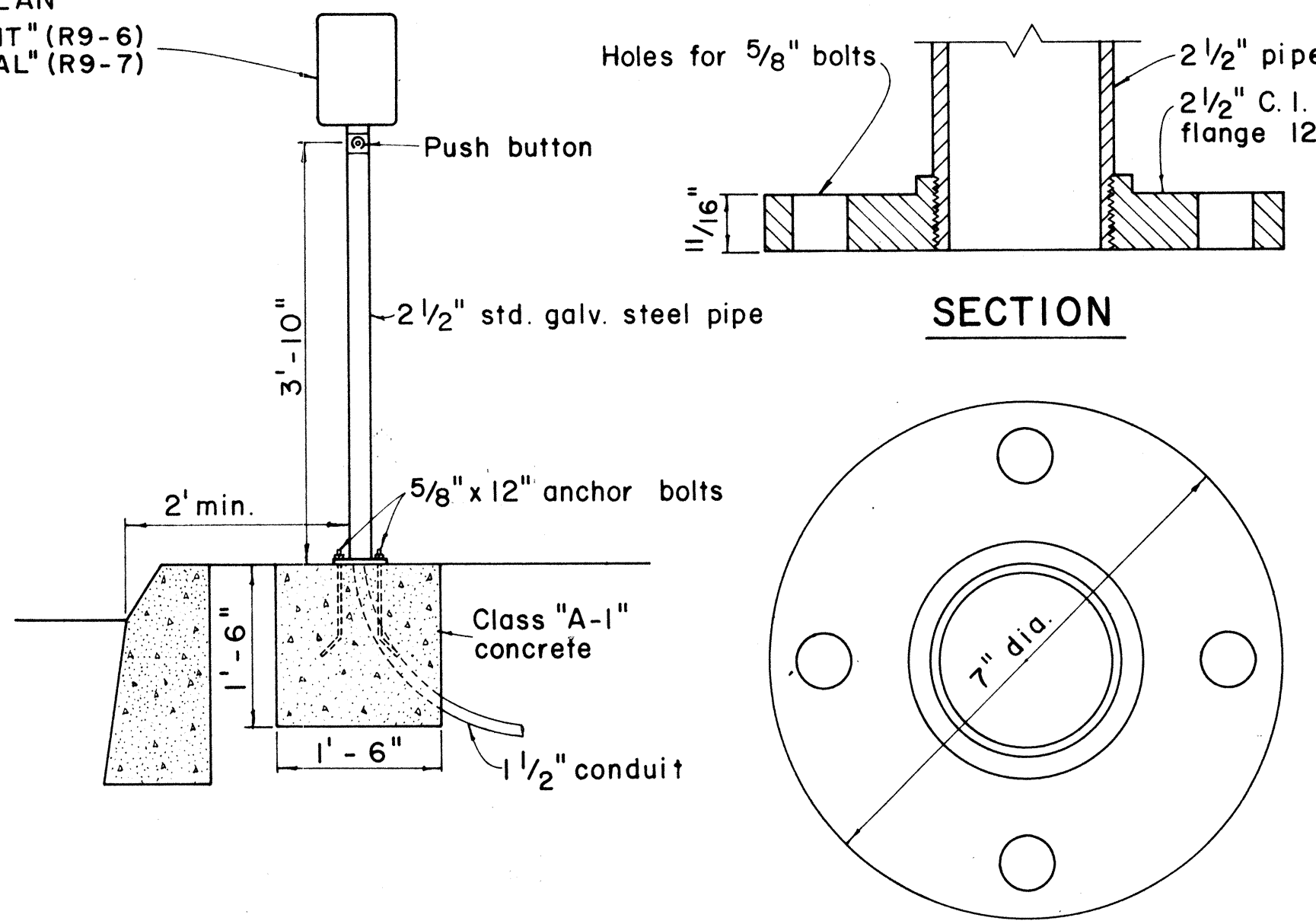


R9-6
9" x 12"



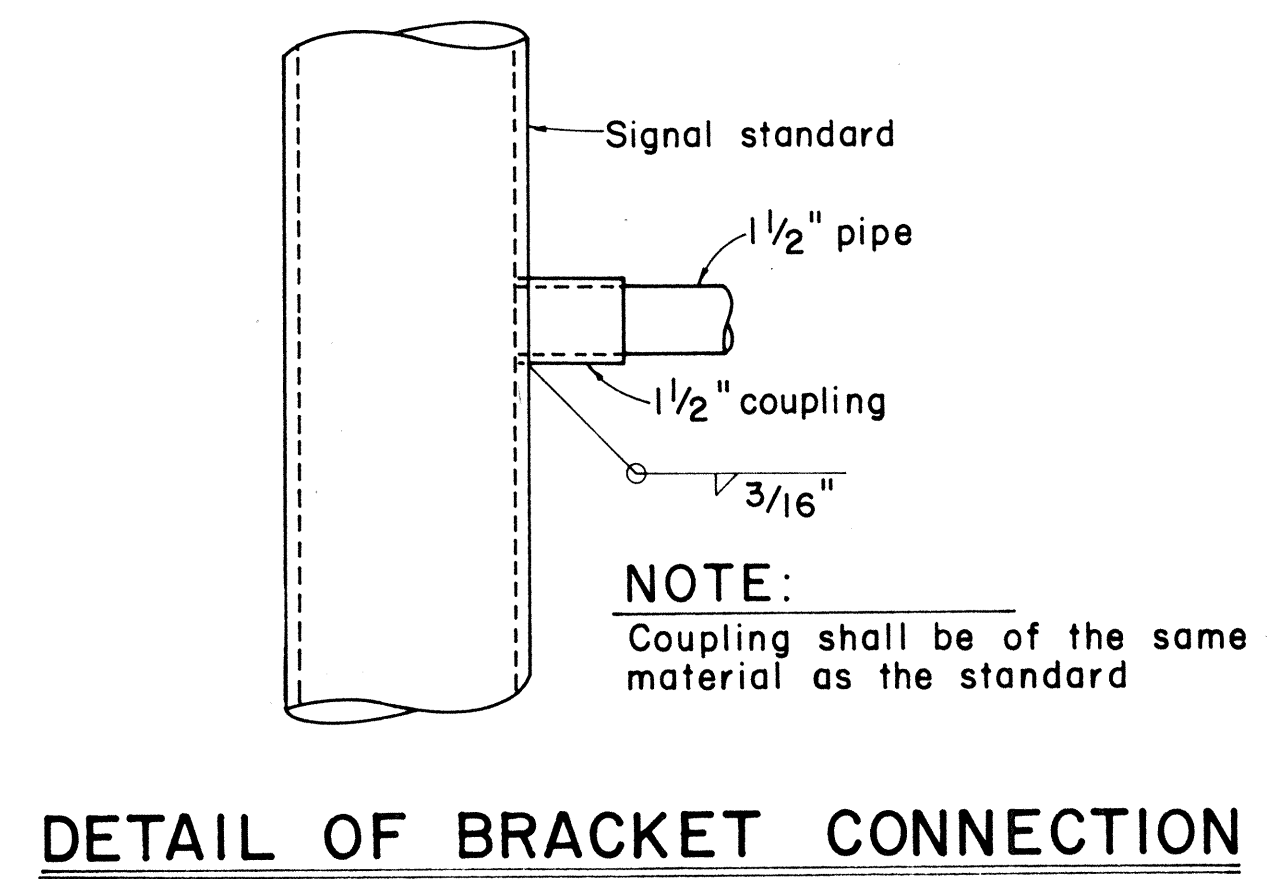
R9-7
9" x 12"

- NOTE:
1. Conduits shall protrude 2" max. above finished surface of foundation.
 2. Conduits shall slope away from pole foundation.
 3. Post and base shall be painted with one coat of approved weather proof dark green enamel.

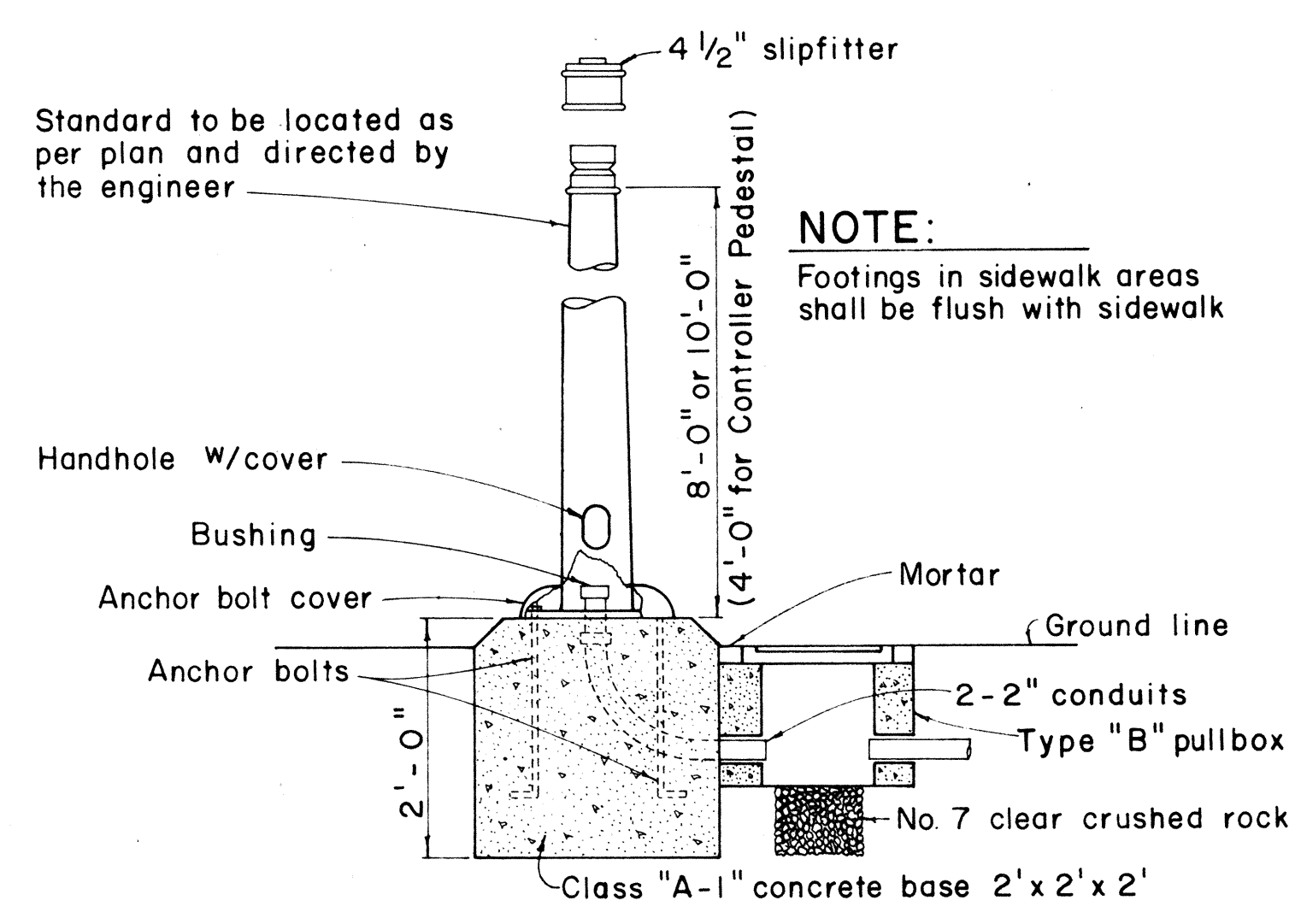


BASE DETAIL

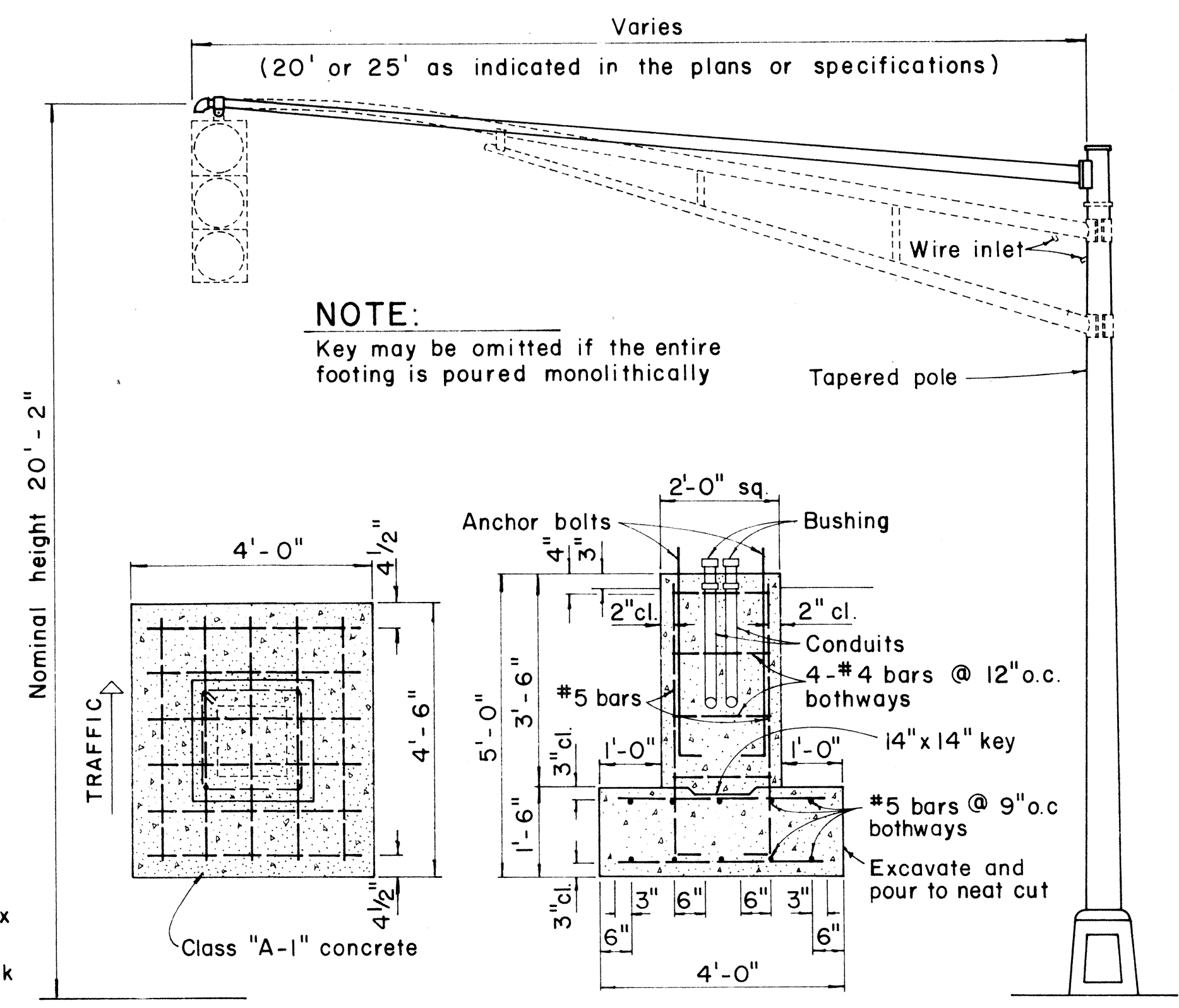
PEDESTRIAN PUSH BUTTON POST AND FOOTING



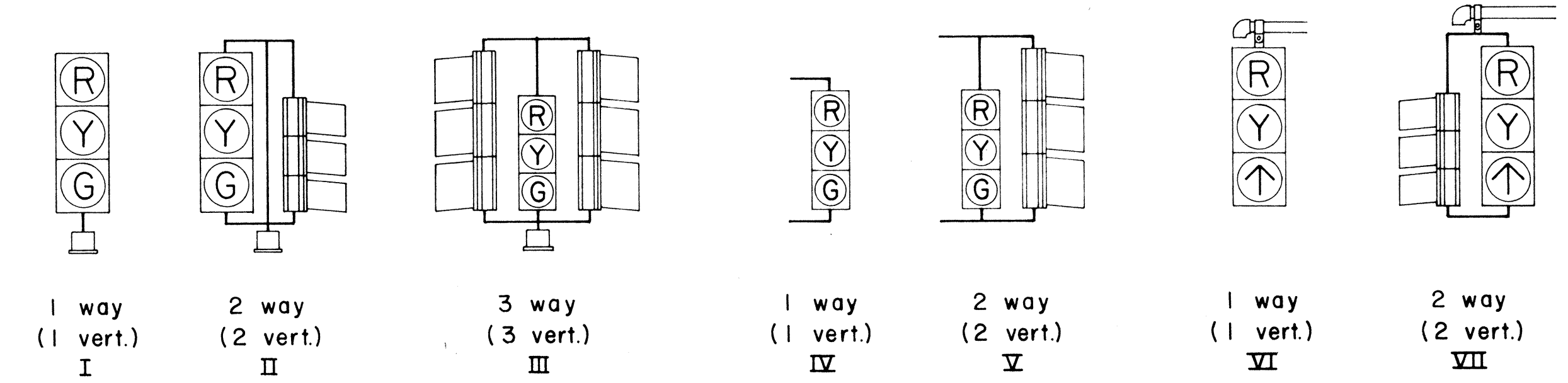
DETAIL OF BRACKET CONNECTION



FOOTING FOR SIGNAL STANDARD OR CONTROLLER PEDESTAL

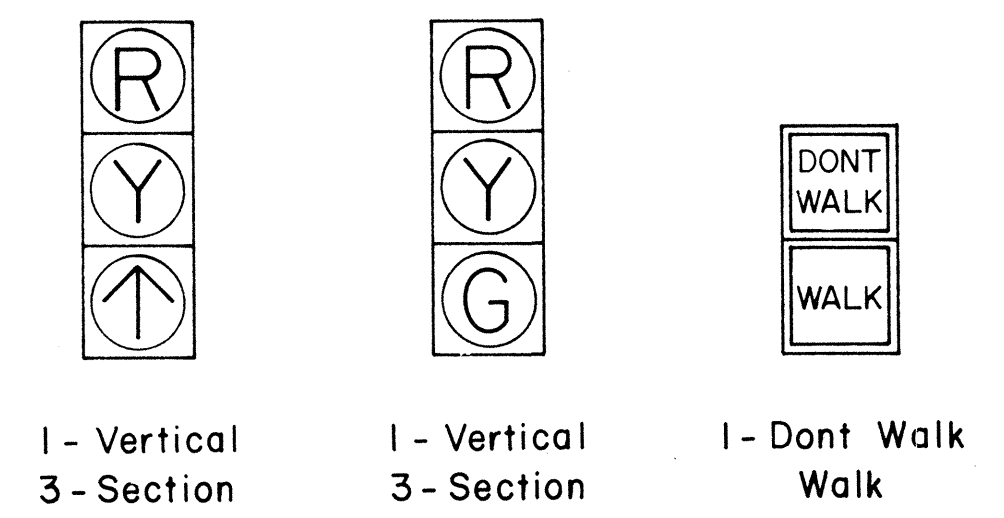


MAST ARM FOOTING AND STANDARD



SLIPFITTER MOUNTINGS BRACKET MOUNTINGS MASTARM MOUNTINGS

TYPICAL VEHICULAR AND PEDESTRIAN SIGNAL MOUNTINGS



TYPICAL SIGNAL ARRANGEMENTS

STATE OF HAWAII

DEPARTMENT OF TRANSPORTATION

HIGHWAYS DIVISION

TRAFFIC SIGNAL SYSTEM

MISCELLANEOUS DETAILS

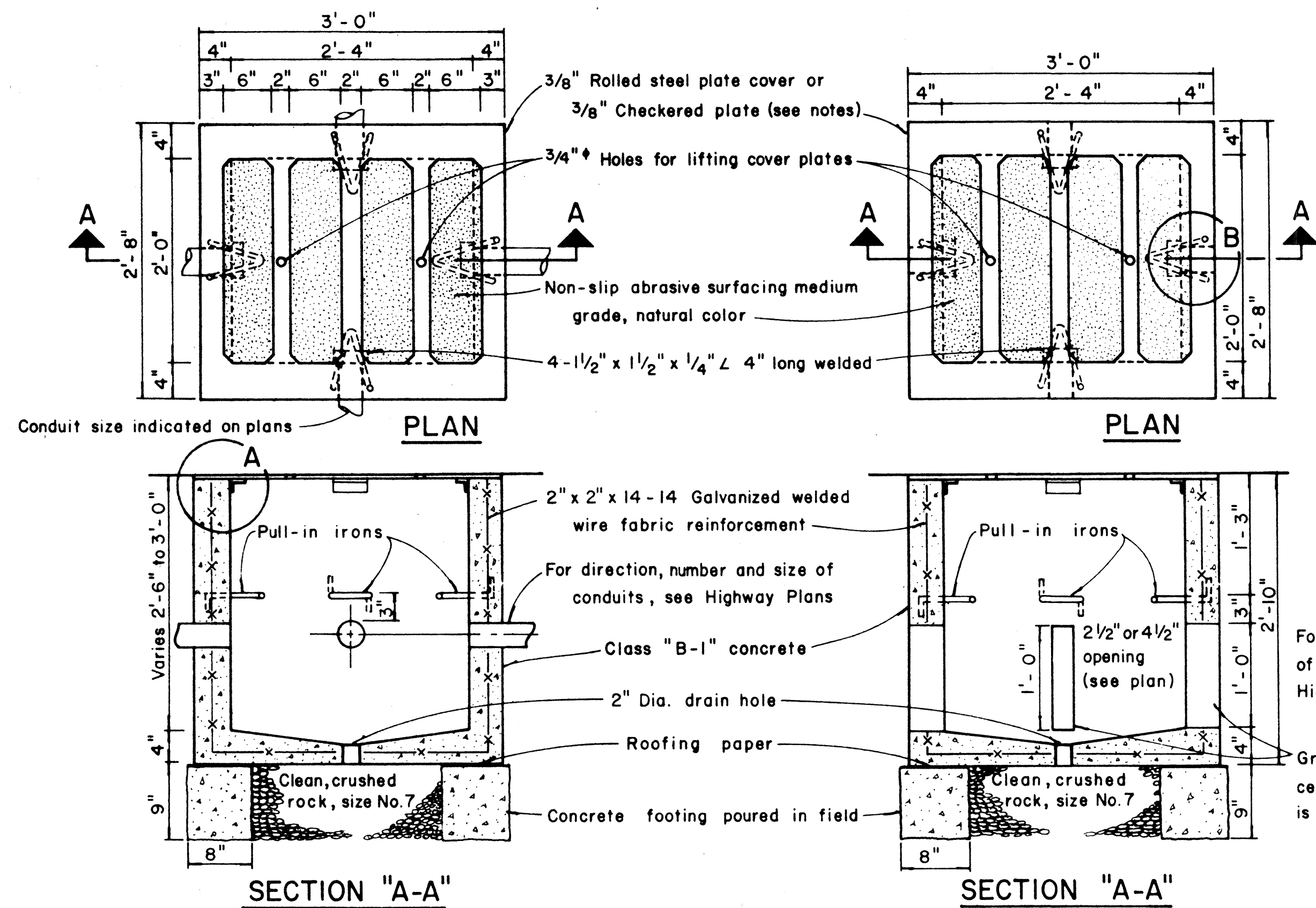
Not to Scale

January, 1968

SHEET No. 1 OF 4 SHEETS

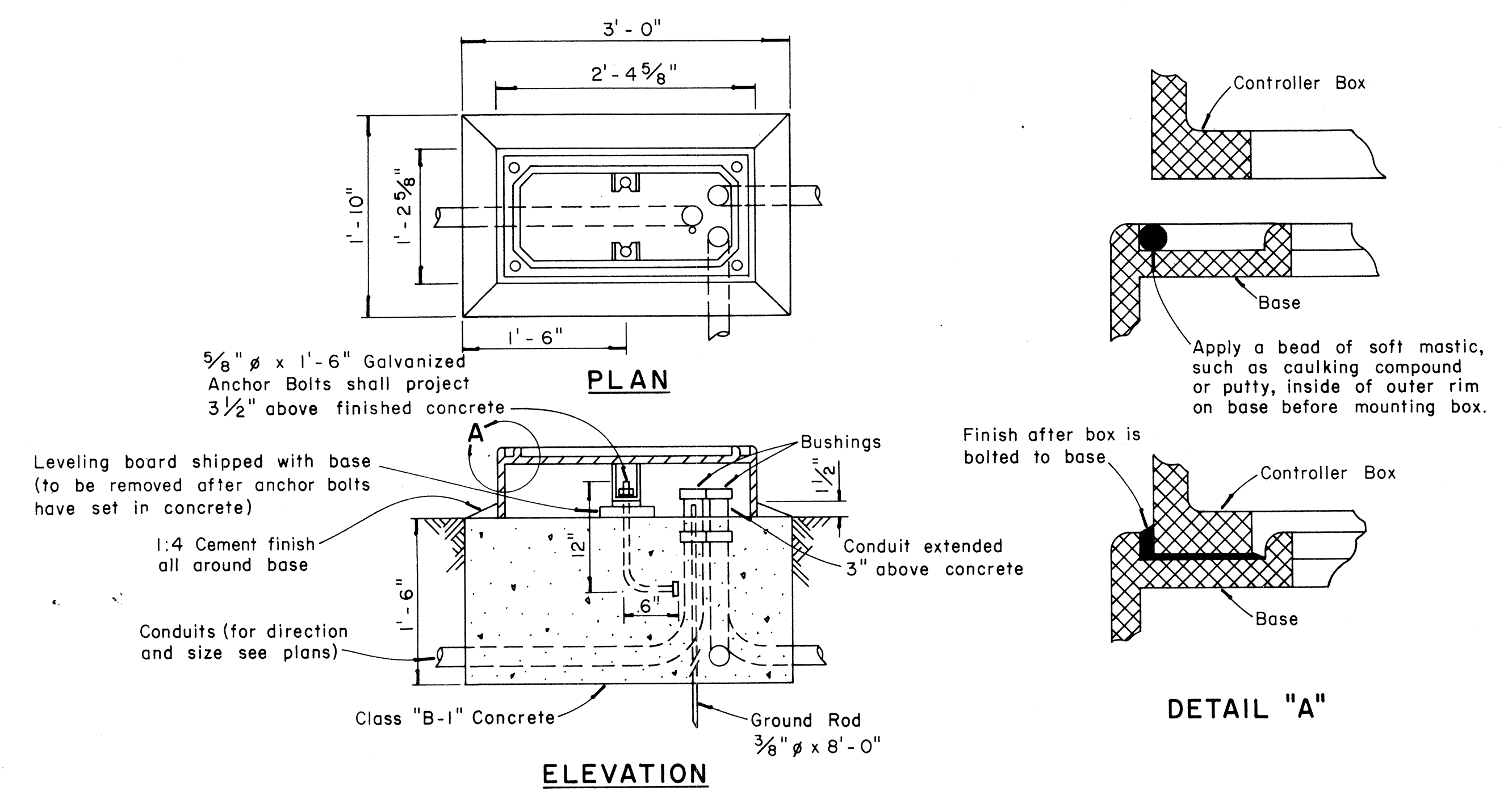
DT-100

SURVEY PLOTTED BY	DATE
DRAWN BY	
CHECKED BY	
NOTE BOOK	
QUANTITIES BY	
CHECKED BY	
No.	

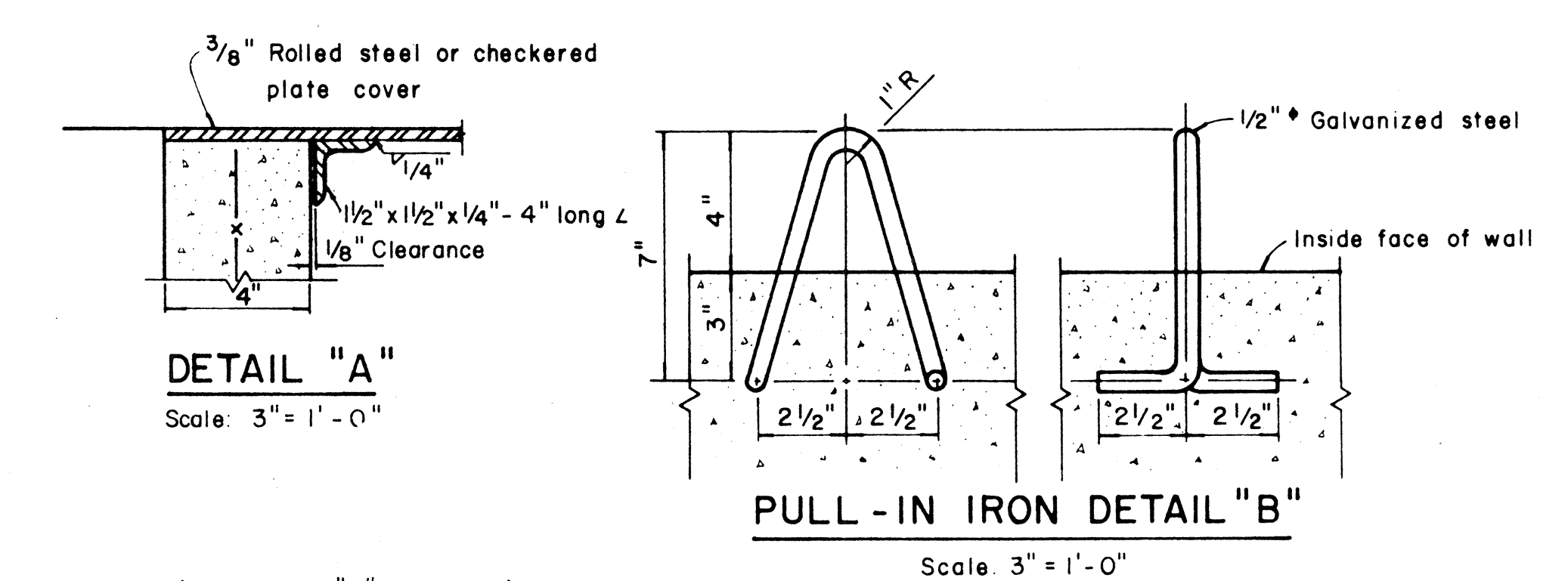


TYPE "A" PULLBOX CAST-IN-PLACE
Scale: 1" = 1'-0"

TYPE "A" PULLBOX PRECAST
Scale: 1" = 1'-0"



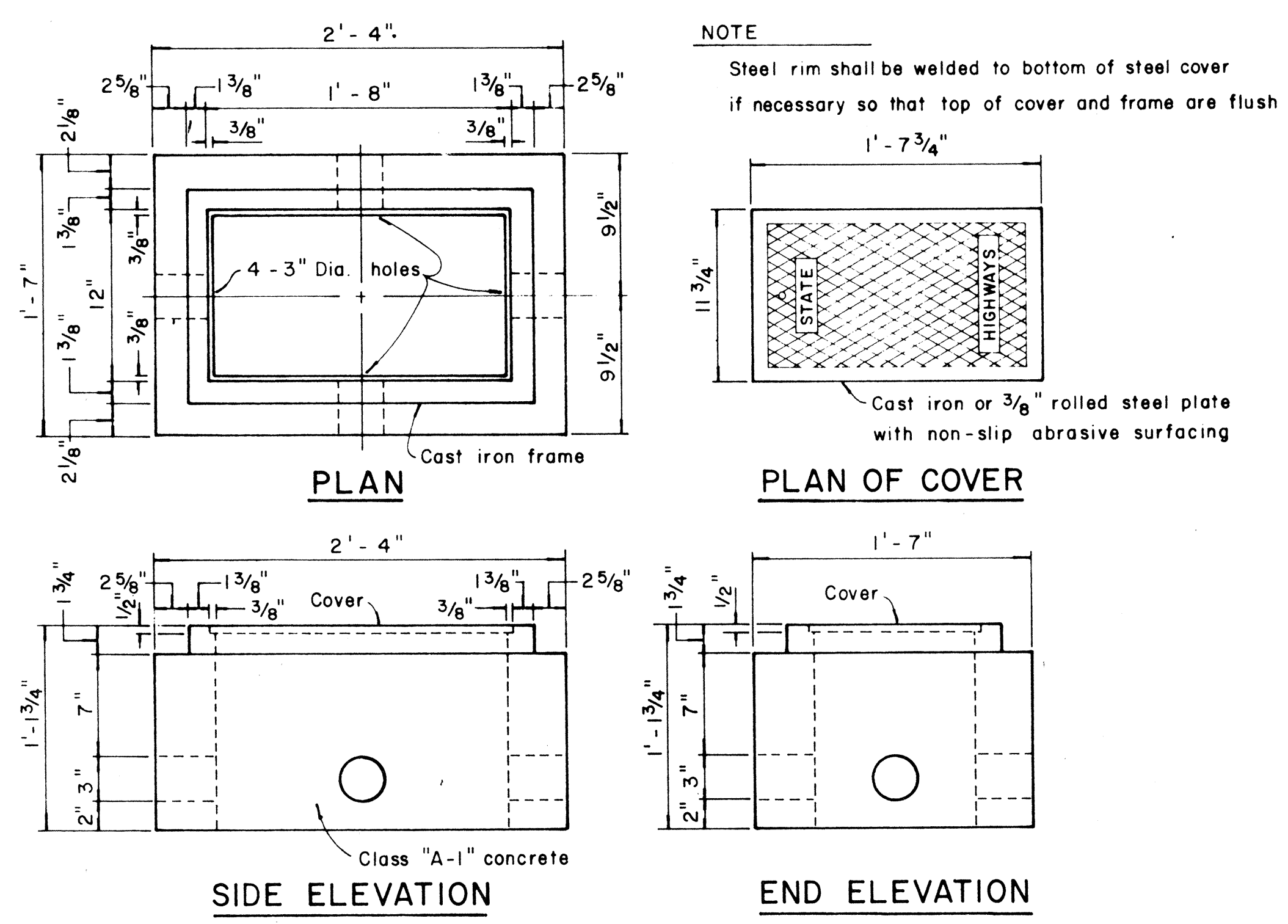
INSTALLATION DETAILS FOR TYPE "M" CONTROLLER BOX
Scale: 1" = 1'-0"



DETAIL "A"
Scale: 3" = 1'-0"

PULL-IN IRON DETAIL "B"
Scale: 3" = 1'-0"

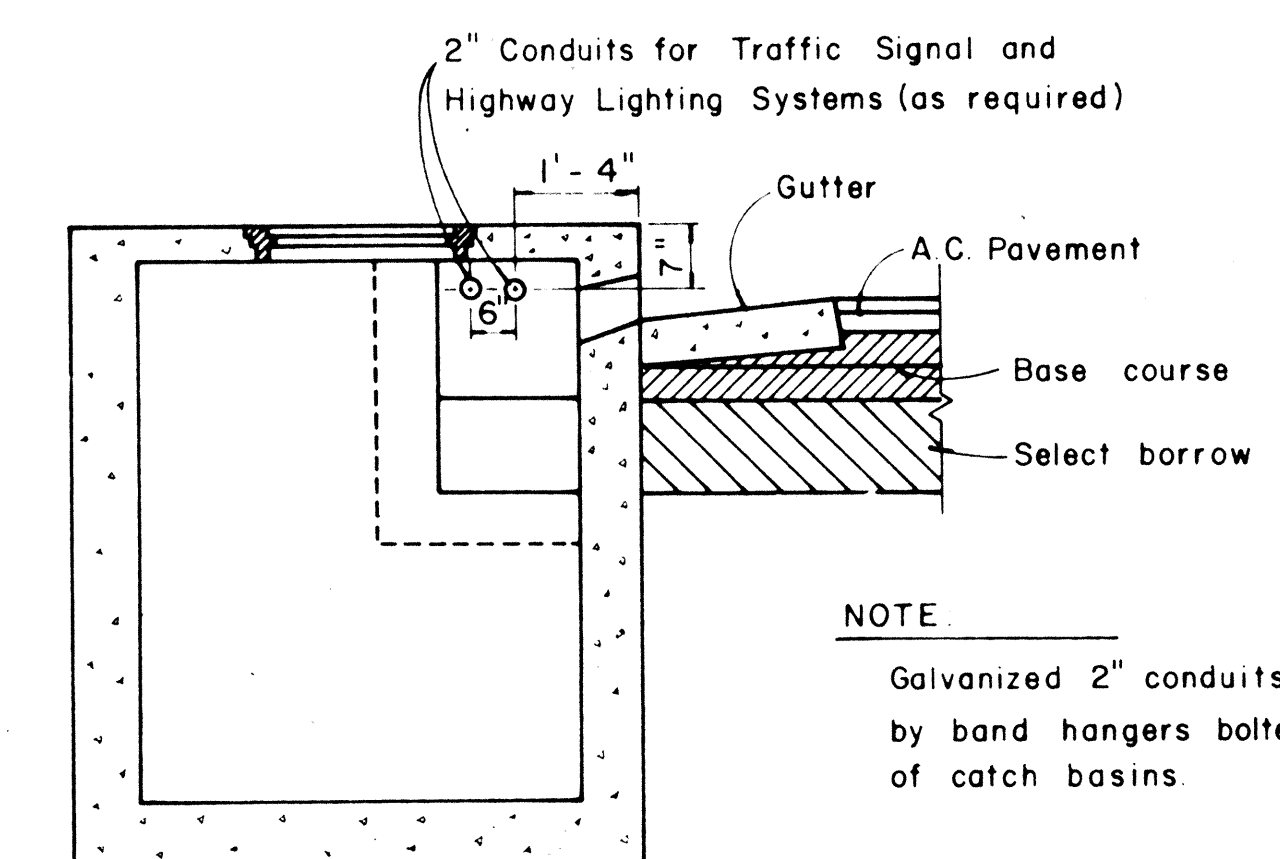
- NOTES: (FOR TYPE "A" PULLBOX)
- 3/8" Rolled steel plate cover with non-slip abrasive surfacing medium grade, natural color shall be used on all pullboxes located on sidewalk areas where pedestrians are walking.
 - 3/8" Checkered plate cover shall be used on all pullboxes located in median areas and other locations where there are no pedestrians walking.
 - Pull irons shall be placed opposite each conduit slot.
 - Covers on all pullboxes located in sidewalk areas shall be set flush with the concrete sidewalk.
 - Each pullbox shall have a pair of pull irons opposite each other for lifting purposes.



SIDE ELEVATION

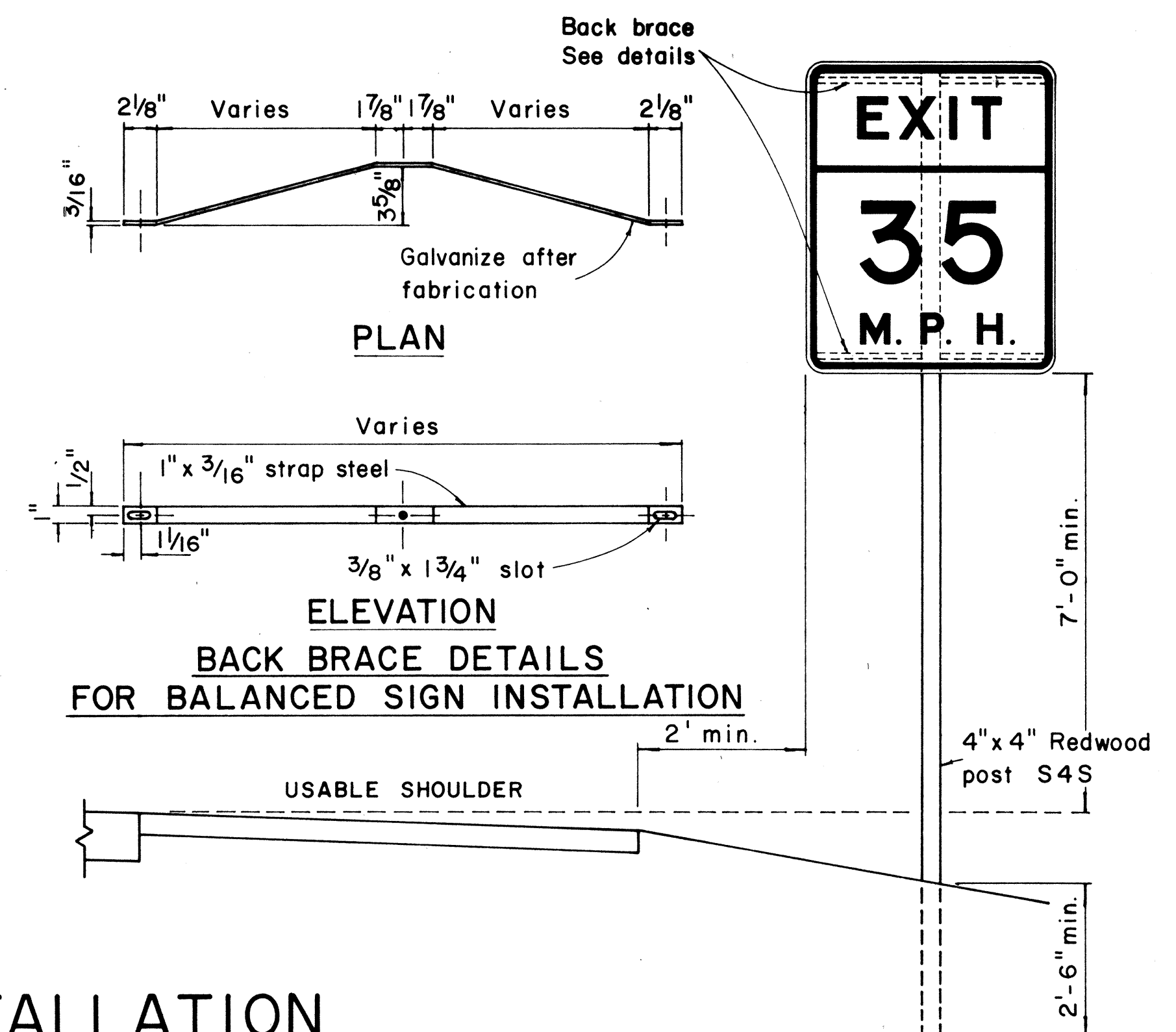
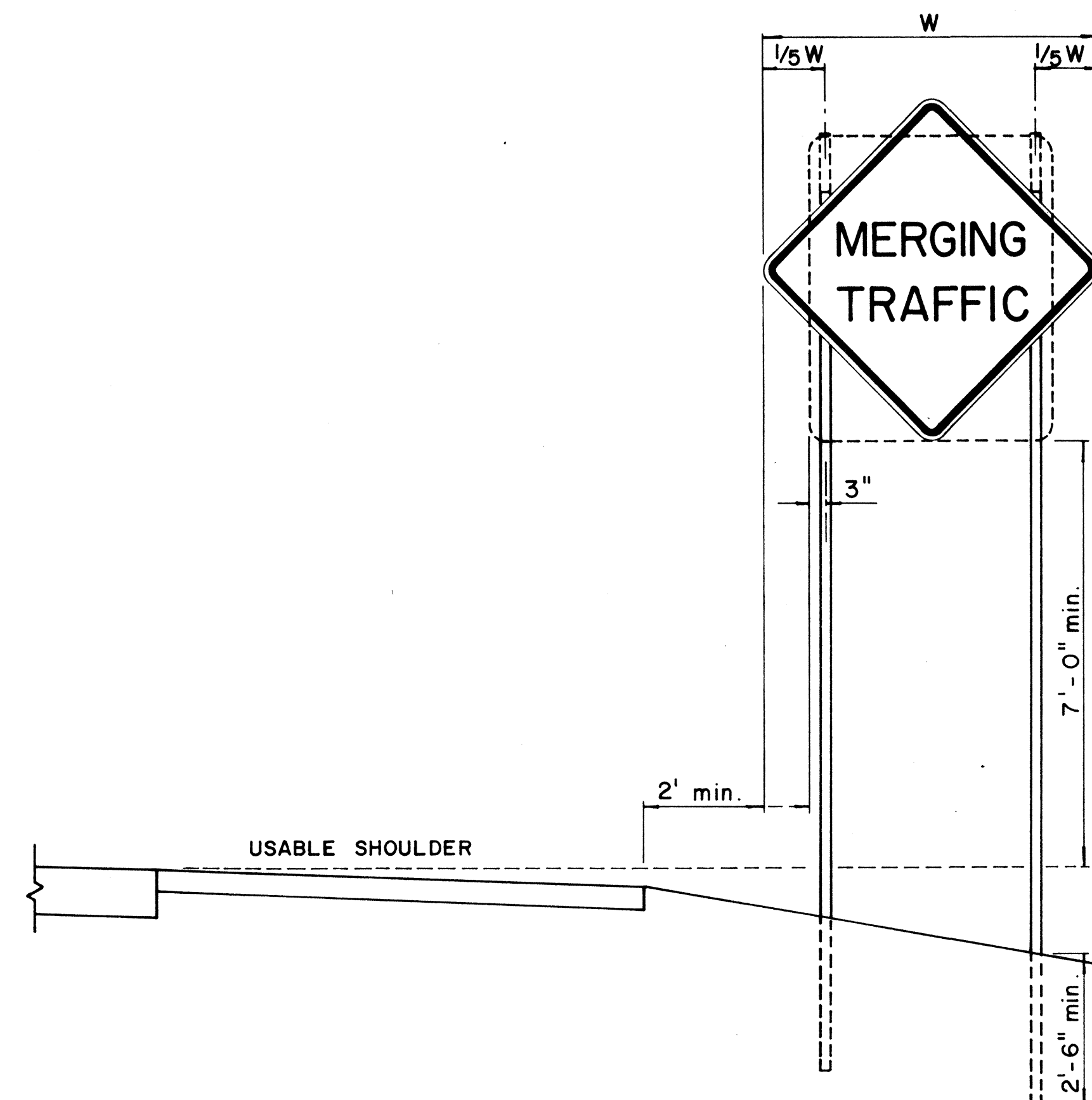
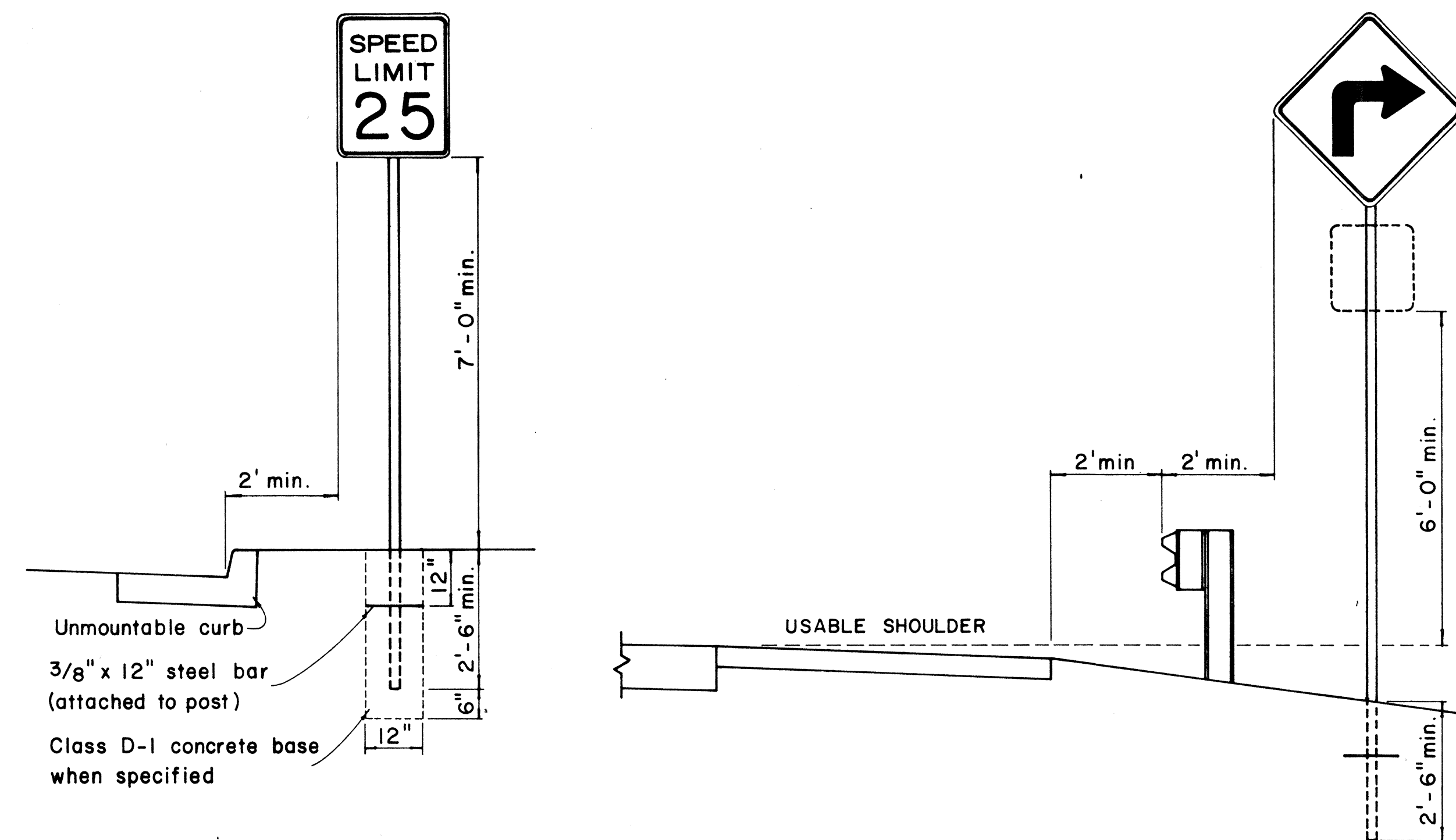
END ELEVATION

TYPE "B" PULLBOX
Scale: 1 1/2" = 1'-0"

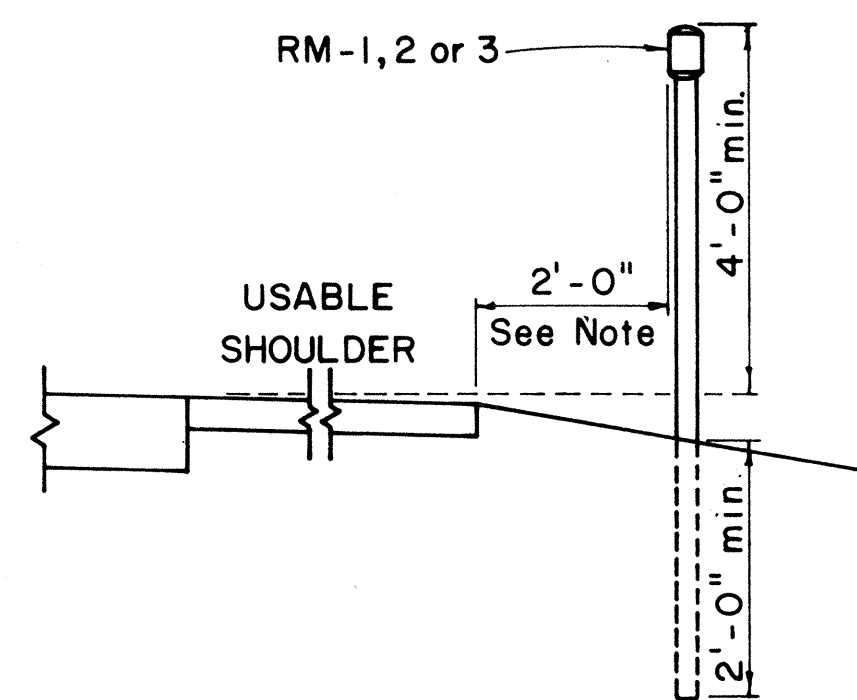


TYPICAL SECTION SHOWING CONDUITS PASSING THROUGH CATCH BASINS
Scale: 1/2" = 1'-0"

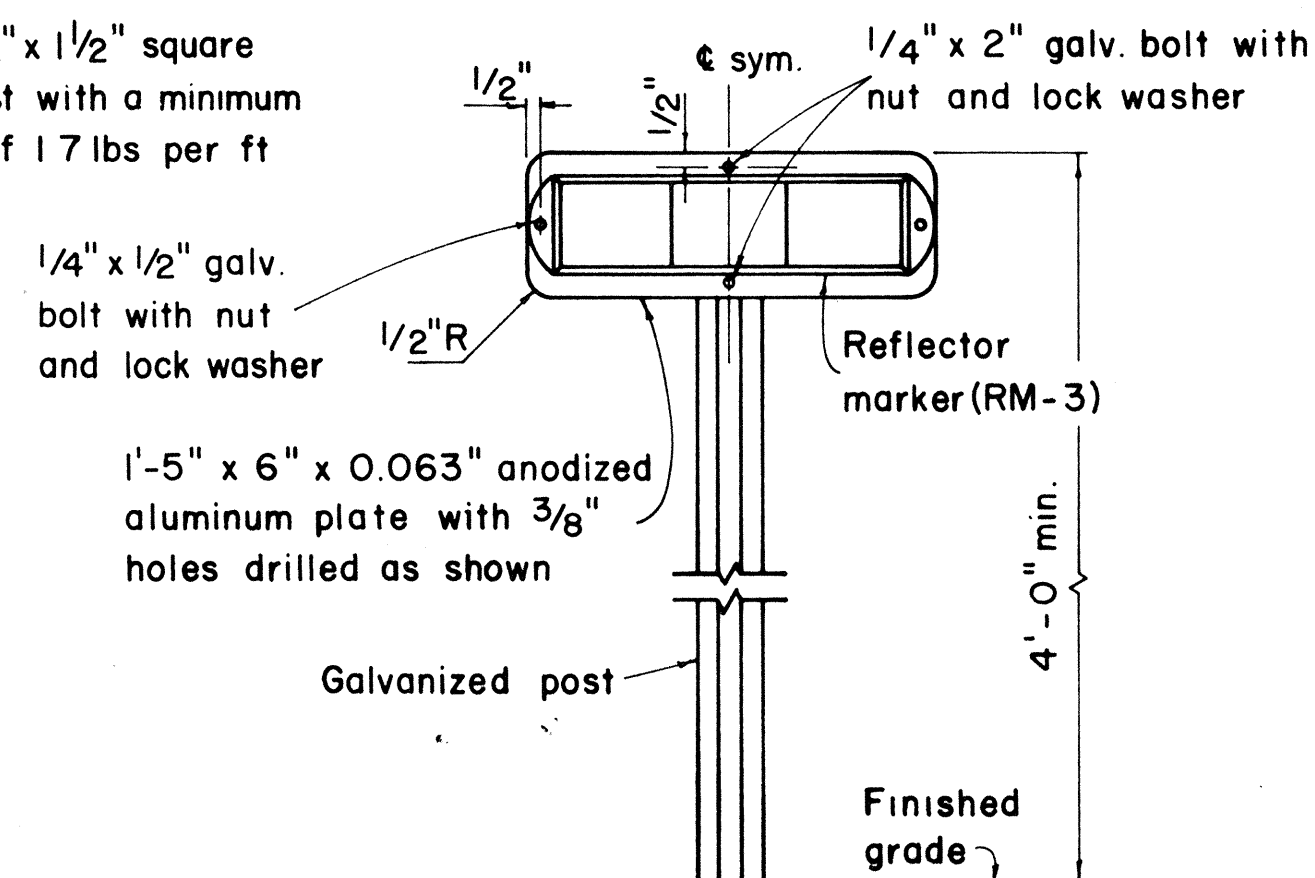
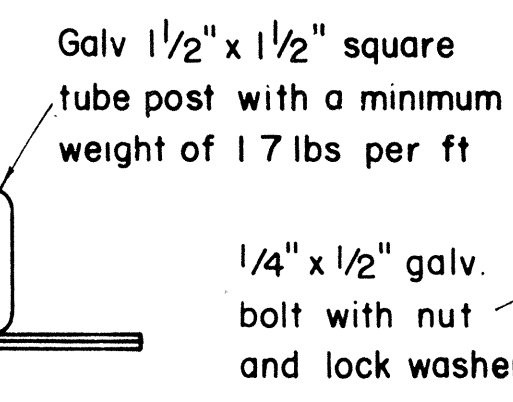
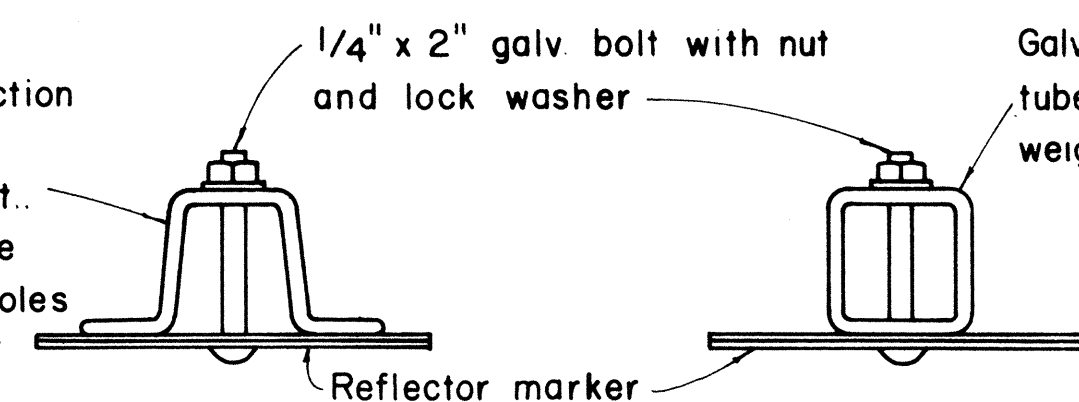
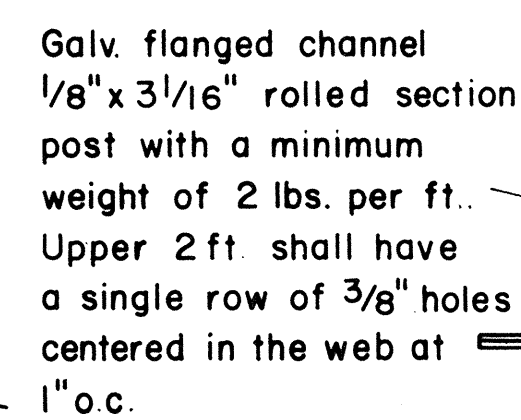
DIST. NO.	STATE	PROJ. NO.	FISCAL YEAR	SHEET NO.	TOTAL SHEETS
HAWAII	HAW.	IIP-01-70(R)	1969	6	7



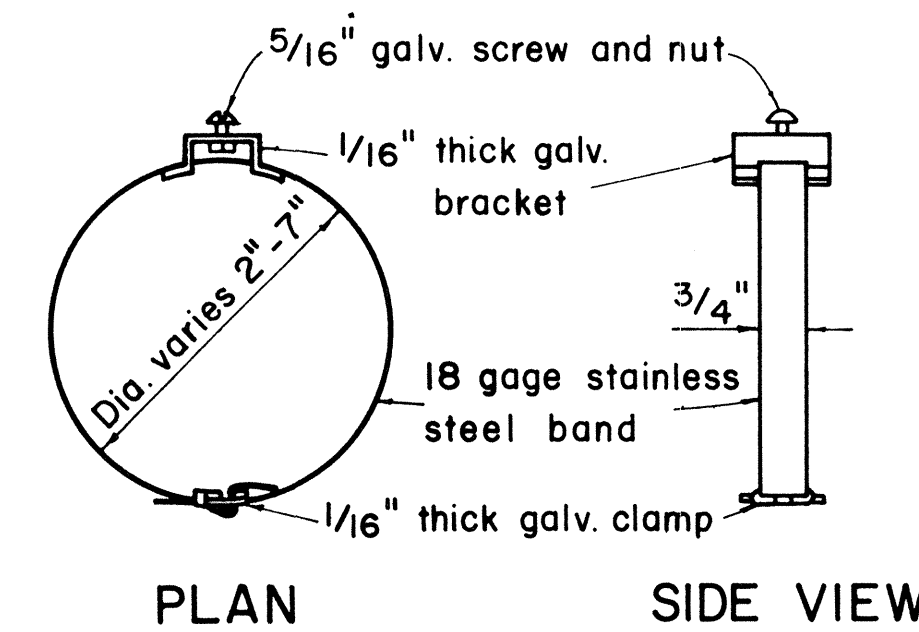
HEIGHT AND LATERAL LOCATION OF SIGNS - TYPICAL INSTALLATION



ROAD DELINEATOR

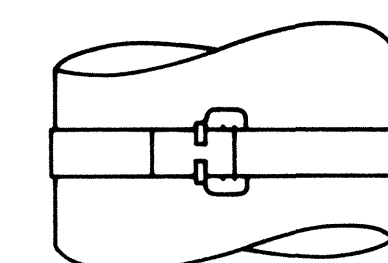


TYPICAL DETAIL
HORIZONTAL REFLECTOR MARKER
RM - 3H



PLAN

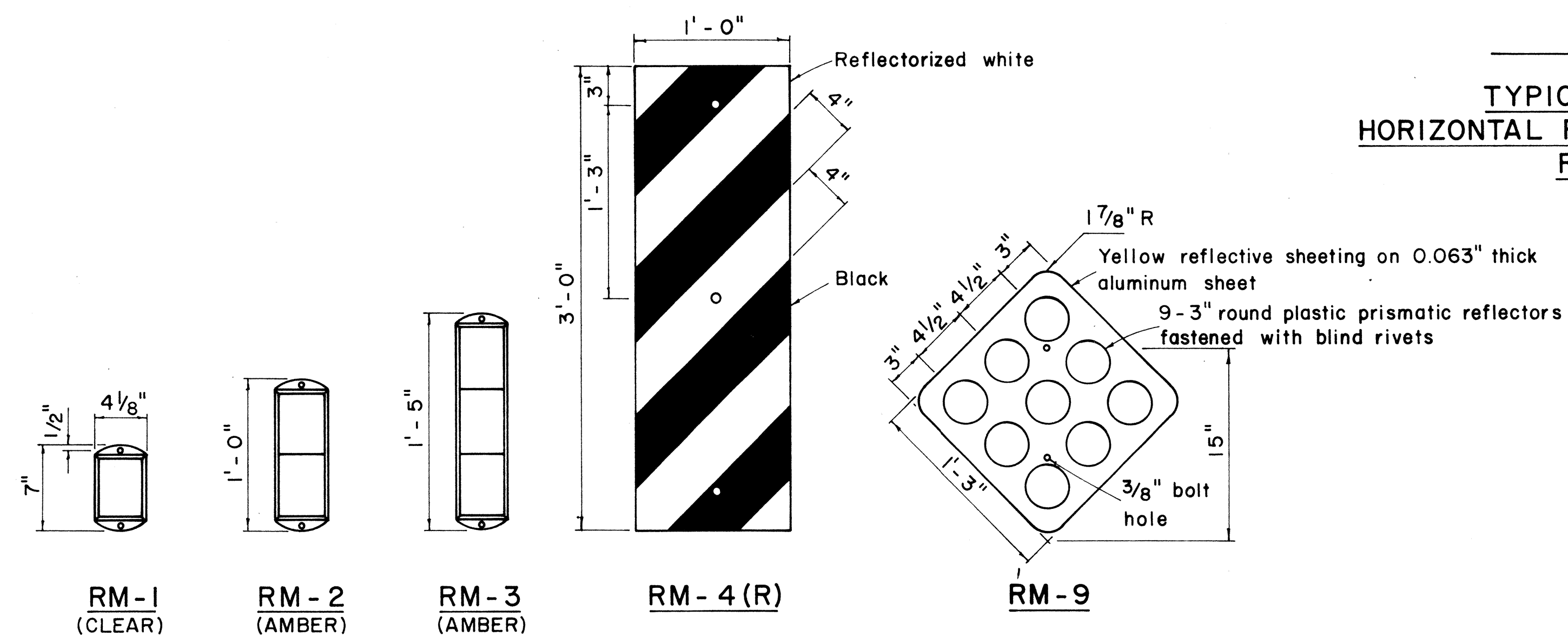
SIDE VIEW



FRONT VIEW

GENERAL NOTES:

1. Sign posts shall be 2" galv. standard pipe or 2" x 2" galv. sq. tube post.
2. Signs 48" and wider or larger than 10 sq. ft. in area shall be mounted on two 2" galv. standard pipe or two 2" x 2" galv. sq. tube post or 4" x 4" redwood post S4S.
3. Signs shall be attached to post with 5/16" galv. bolts with nuts and 7/8" x 0.06 stainless steel washers with neoprene rubber gasket.
4. Sign posts shall extend 3/2" above sign where required for City and County street name signs.
5. Reflector markers RM-1, 2, 3 shall be glass sphere reflector markers with 4" x 5" reflector units (as shown) or plastic prismatic reflector markers with 3" diameter reflector units.
6. Clearance markers (RM-3, RM-4) shall be installed with the edge of the marker in line with the inner edge of the obstruction.
7. (R) or (L) indicates right or left and shall be as shown on the plans.



REFLECTOR MARKERS

TYPICAL BAND BRACKET FOR MOUNTING TRAFFIC SIGNS

STATE OF HAWAII
DEPARTMENT OF TRANSPORTATION
HIGHWAYS DIVISION

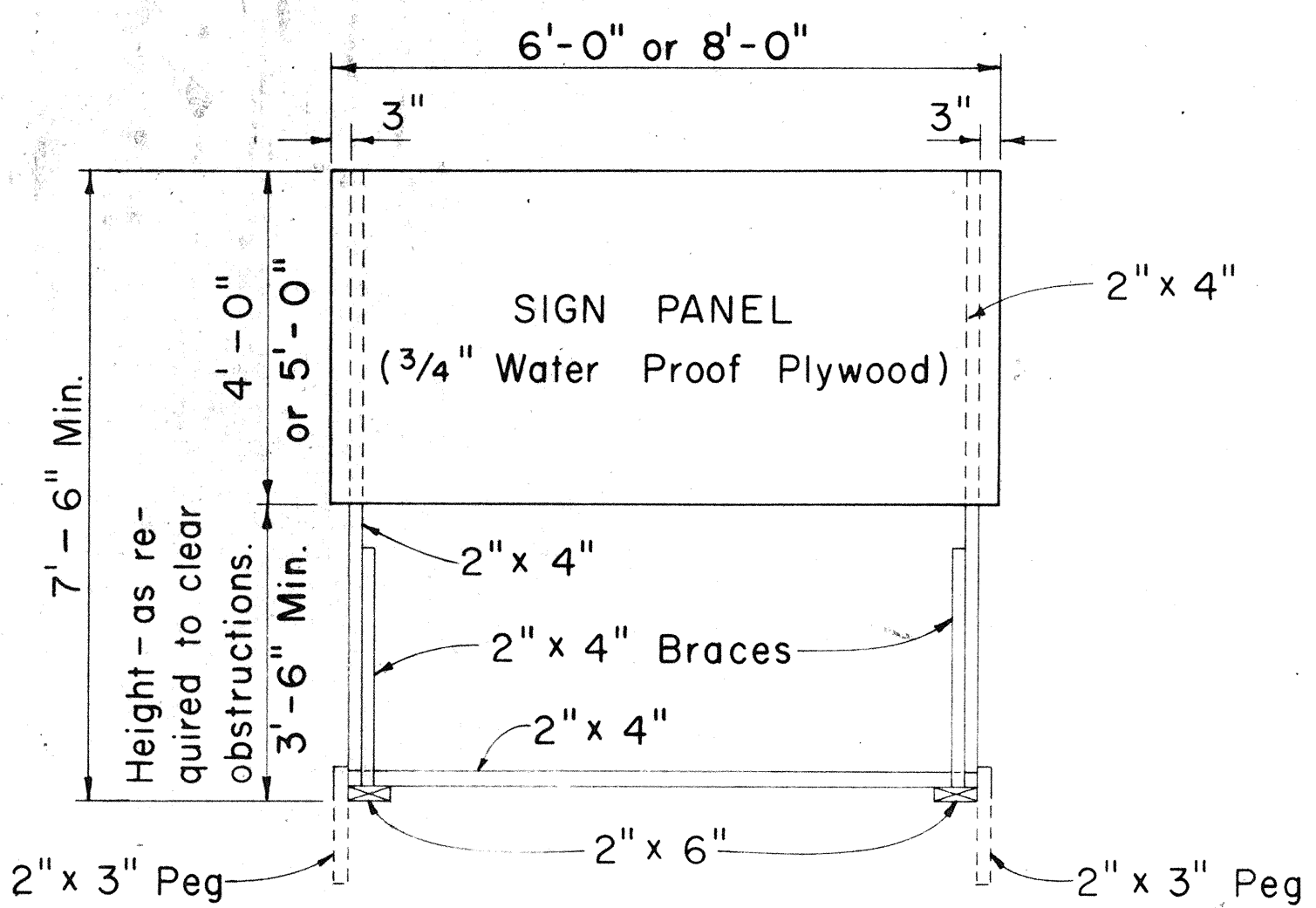
STANDARD DETAILS
MISCELLANEOUS SIGN DETAILS

Not to scale March, 1968

SHEET No. 3 OF 4 SHEETS DT 100

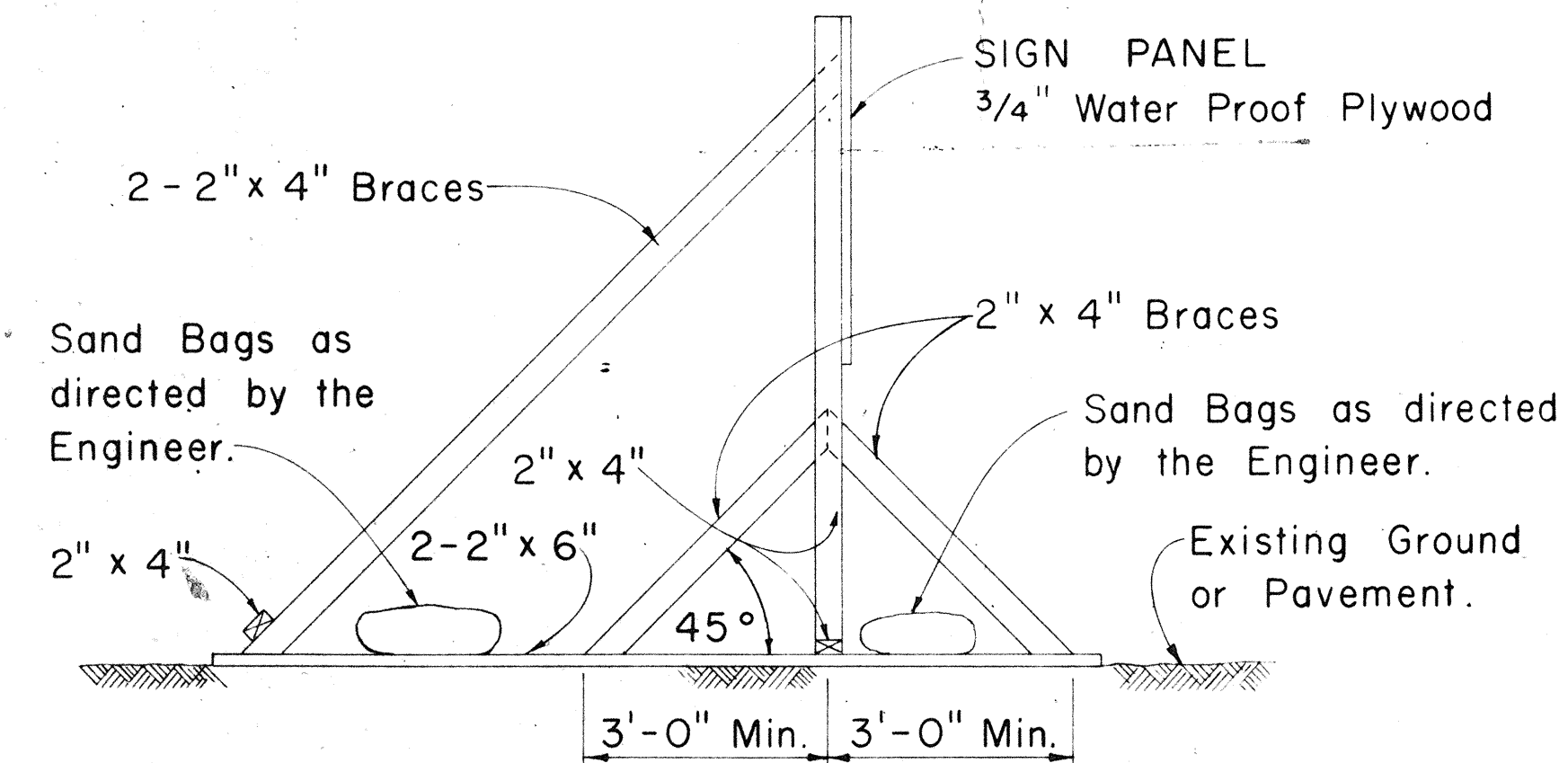
DIST. NO.	STATE	PROJ. NO.	FISCAL YEAR	SHEET NO.	TOTAL SHEETS
HAWAII	HAW.	HP-01-70(R)	1969	7	7

REVISED : NOV. 17, 1970



FRONT VIEW

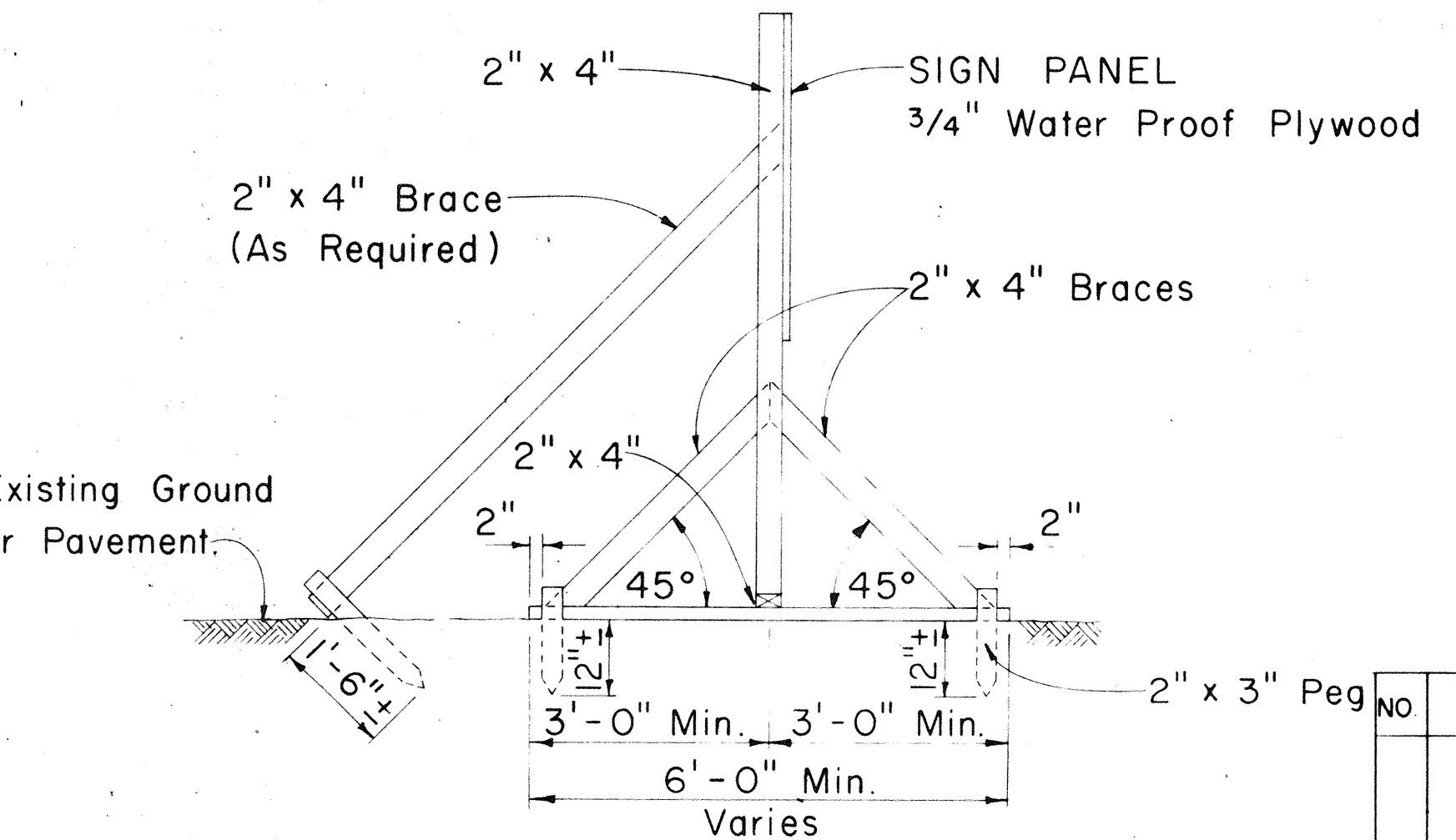
Scale: 1/2" = 1'-0"



SIDE VIEW

(SIGN FRAME WEIGHTED DOWN)

Scale: 1/2" = 1'-0"



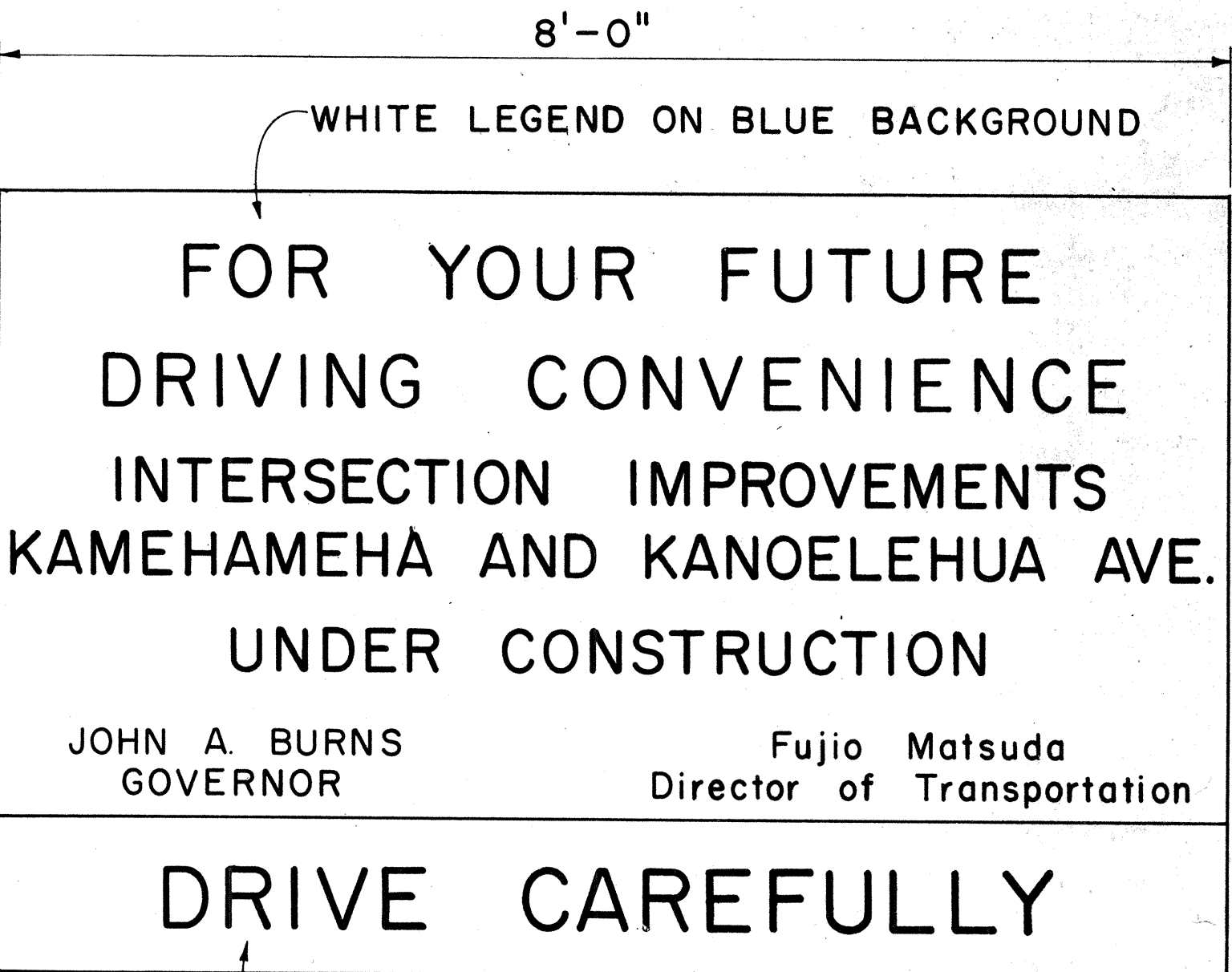
SIDE VIEW

(SIGN FRAME ANCHORED IN GROUND)

Scale: 1/2" = 1'-0"

PROJECT INFORMATIONAL SIGN

Scale: As Shown



WHITE LEGEND ON BLUE BACKGROUND

BLACK LEGEND ON YELLOW BACKGROUND

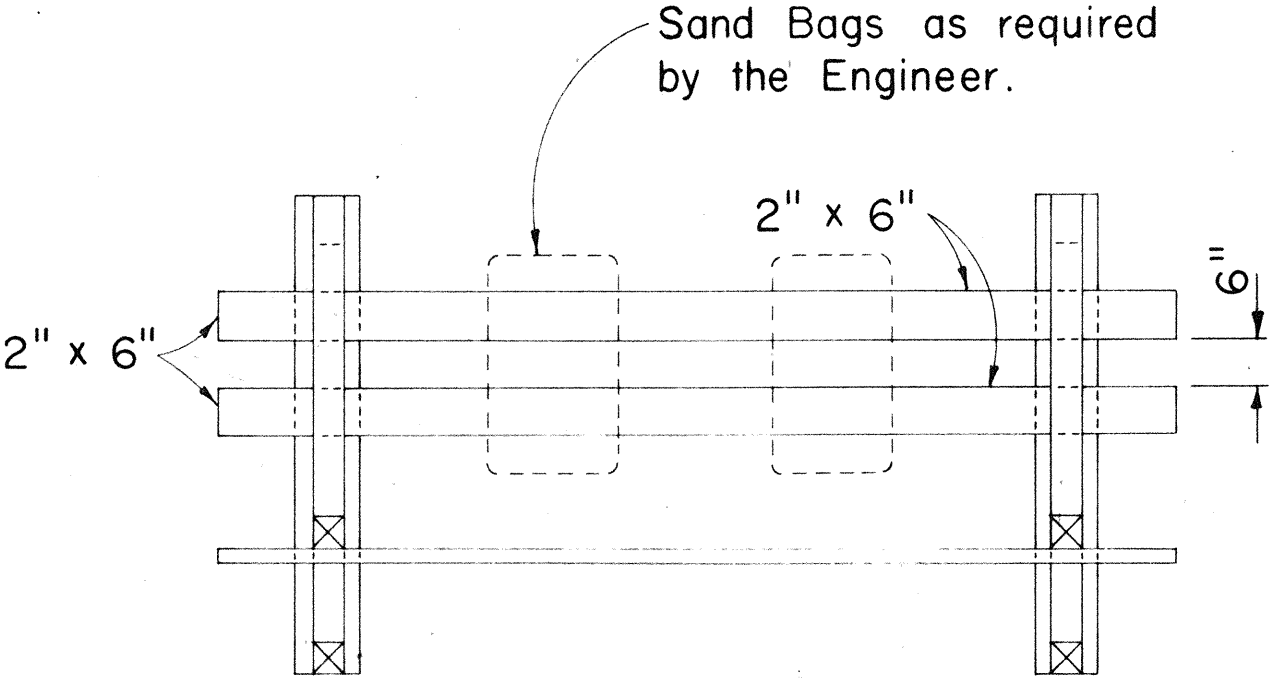
USE SERIES "D" LETTERS

GENERAL NOTES

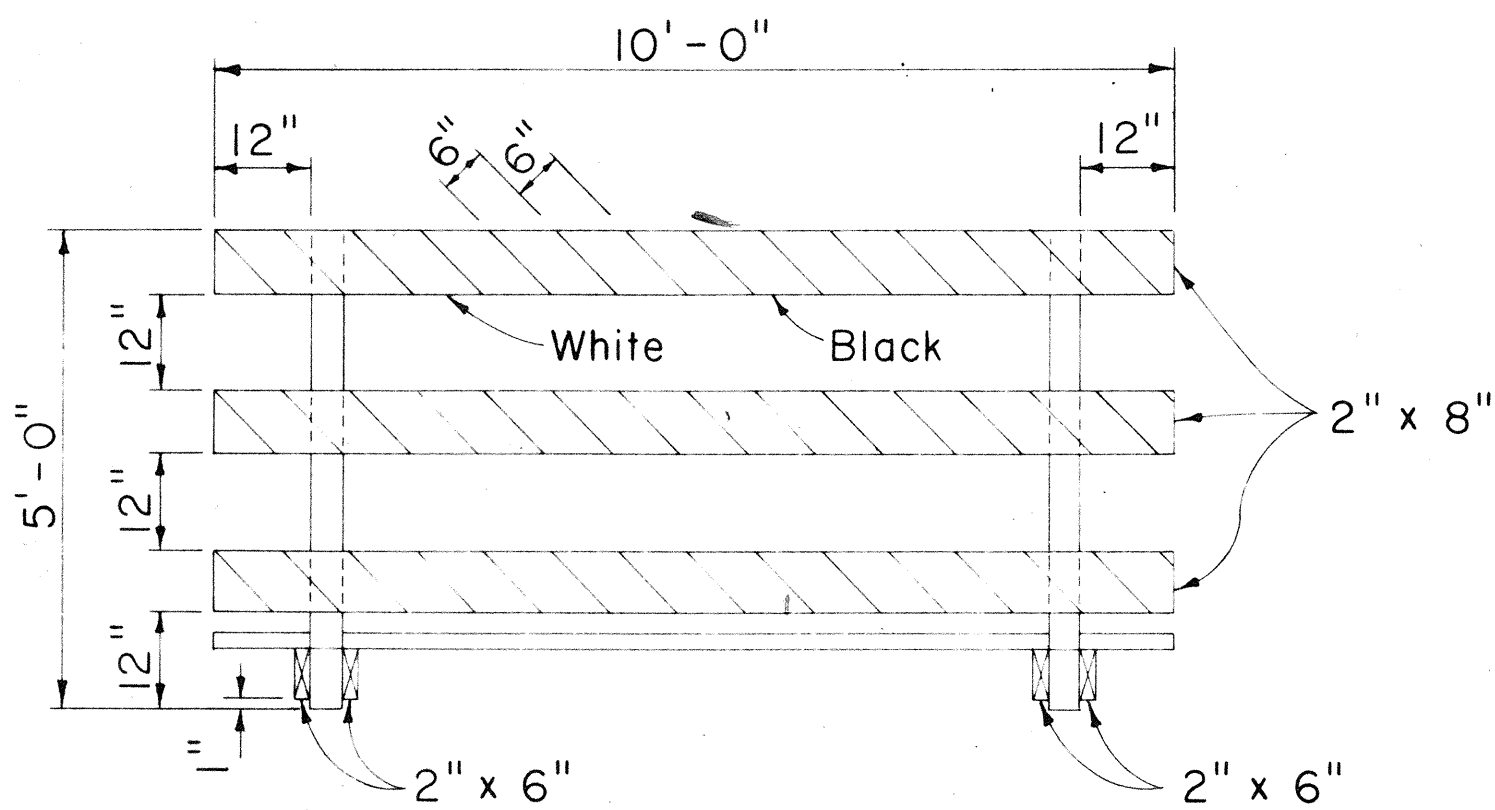
- The Contractor shall furnish and install the sign panels, supports and frames at the locations as ordered by the Engineer.
- At the end of construction the Contractor shall remove the sign panels and return it to the State Highway Maintenance Yard. Sign supports and frames shall be removed and cleared from the project site.

GENERAL NOTES

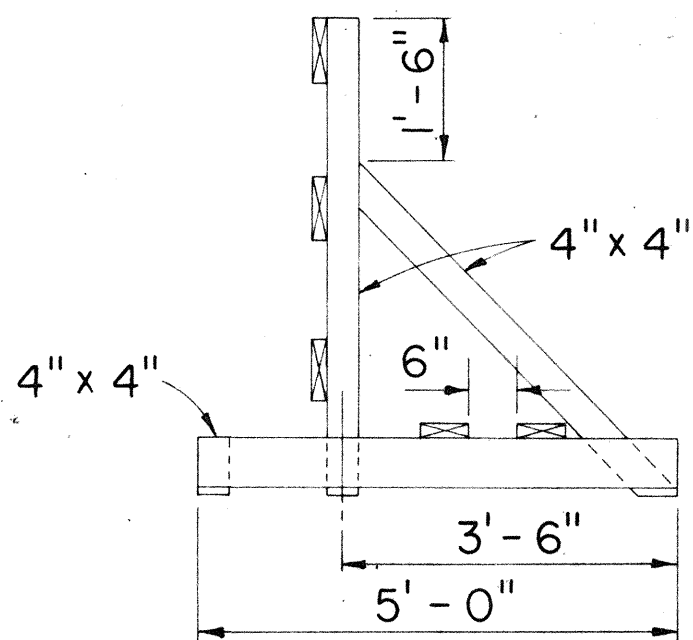
- The Contractor shall construct, install and maintain the wood barricades at the locations shown on the Plans.
- The permanent wood barricades shall be left in place or relocated upon completion of the project as ordered by the Engineer and are to become State property.



PLAN VIEW



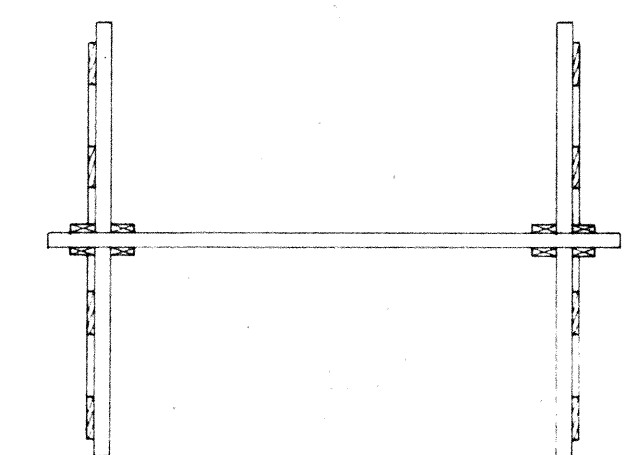
FRONT VIEW



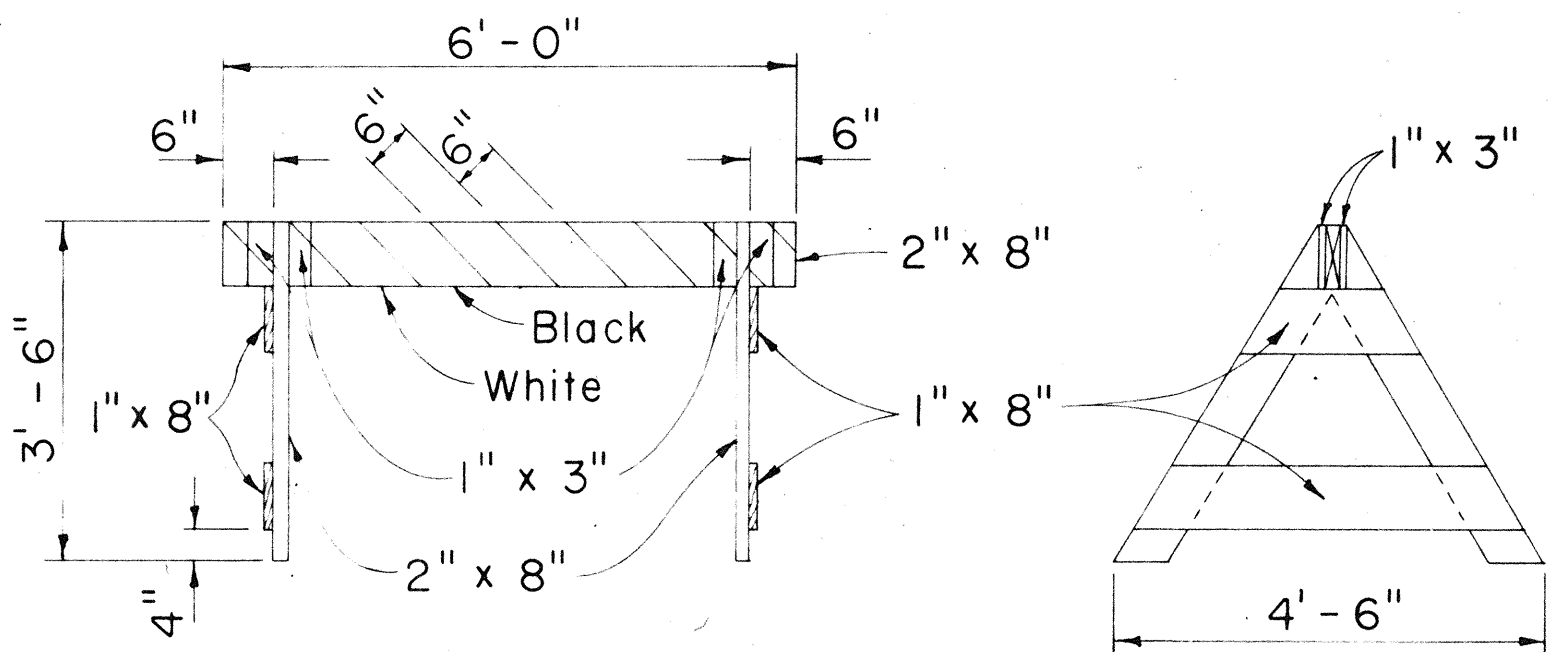
END VIEW

CLASS I BARRICADE

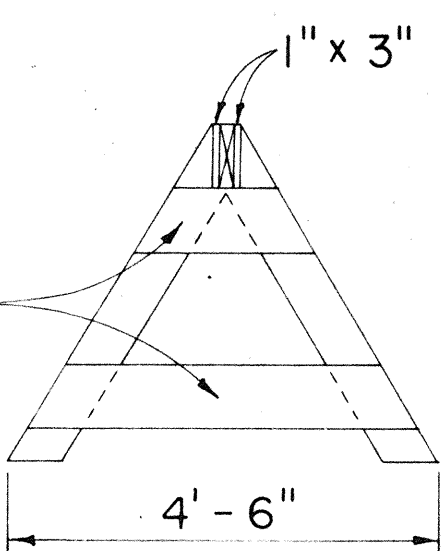
Scale: 1/2" = 1'-0"



PLAN VIEW



FRONT VIEW



END VIEW

CLASS II BARRICADE

Scale: 1/2" = 1'-0"

NO.	REVISION	APPROVED BY	DATE

STATE OF HAWAII
DEPARTMENT OF TRANSPORTATION
HIGHWAYS DIVISION
TYPICAL DETAILS
PROJECT INFORMATIONAL SIGN
AND
WOOD BARRICADES

Scale: As Shown

Date: Dec., 1969

SHEET No. 4 OF 4 SHEETS DT 80

SURVEY PLOTTED BY	DATE
DRAWN BY	
CHECKED BY	
NOTED BY	
DATE	