

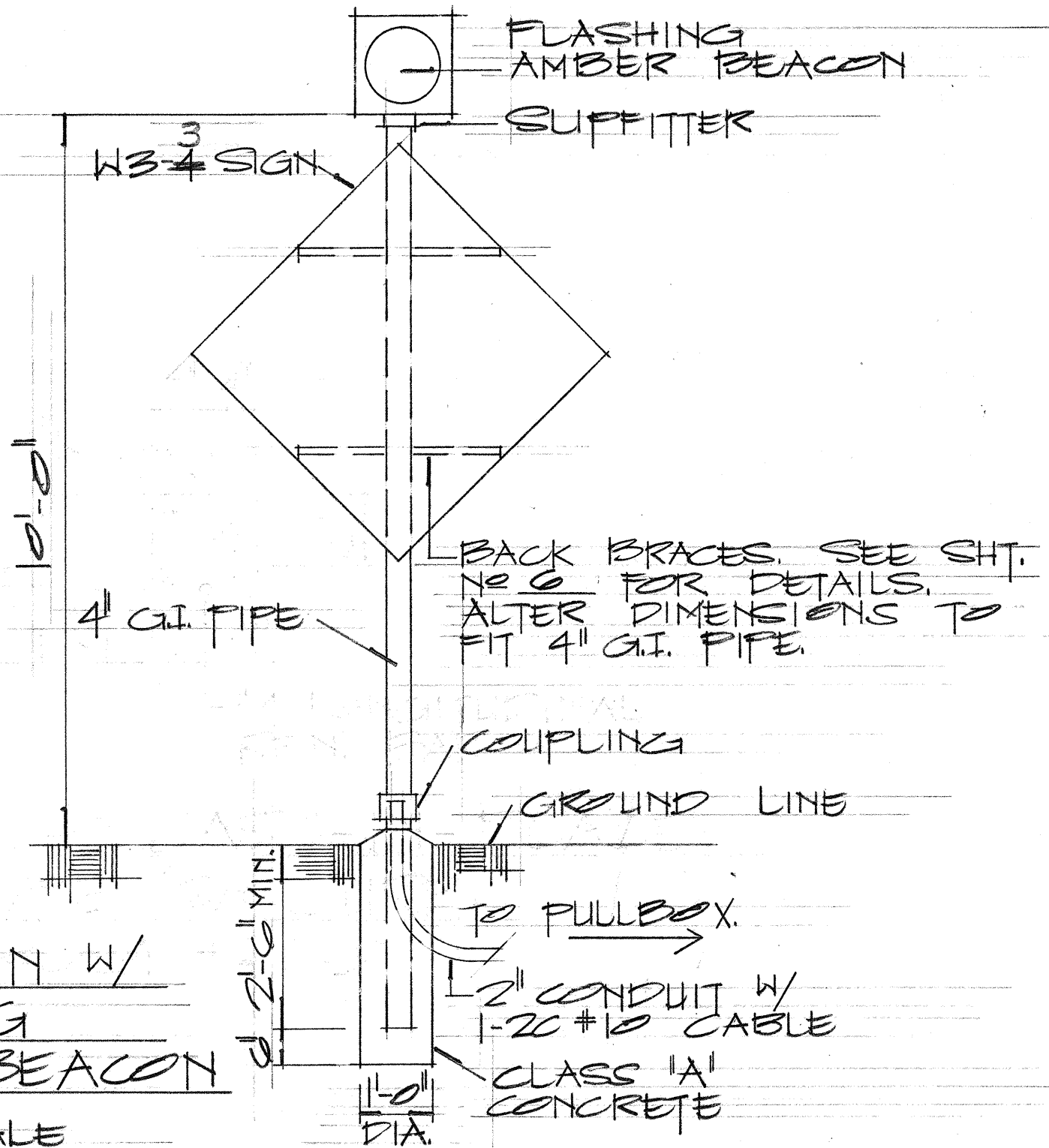




DIST. NO.	STATE	PROJ. NO.	FISCAL YEAR	SHEET NO.	TOTAL SHEETS
HAWAII	HAW.	IIP-01-70(R)	1969	3	7

### GENERAL NOTES:

1. THE FLASHING AMBER BEACON INSTALLATION AS SHOWN HEREIN, LESS THE W3-4 SIGN, SHALL BE MADE A PART OF CONTRACT ITEM NO. 023.01 "TRAFFIC SIGNAL SYSTEM" AND NO ADDITIONAL COMPENSATION WILL BE MADE.
2. LOCATION OF EXISTING UNDERGROUND STRUCTURES SUCH AS CULVERTS, PIPELINES, CONDUITS, CABLES, ETC., AS SHOWN ON THE PLANS ARE APPROXIMATE ONLY. OTHER EXISTING UTILITIES MAY NOT BE SHOWN. THE CONTRACTOR SHALL CHECK AND VERIFY THE LOCATION OF SAME.
3. THE EXACT LOCATION OF TRAFFIC SIGNAL STANDARDS, MAST ARMS, CONTROLLER BASE, PULLBOXES AND CONDUITS SHALL BE DETERMINED IN THE FIELD BY THE ENGINEER.
4. EXISTING SIGNS NOT INCORPORATED IN THE COMPLETED SYSTEM SHALL BE REMOVED AND STOCKPILED AS DIRECTED BY THE ENGINEER.
5. PAVEMENT MARKINGS BY OTHERS.
6. THE EXACT LOCATION OF A PROJECT INFORMATIONAL SIGN, SHALL BE DETERMINED IN THE FIELD BY THE ENGINEER.



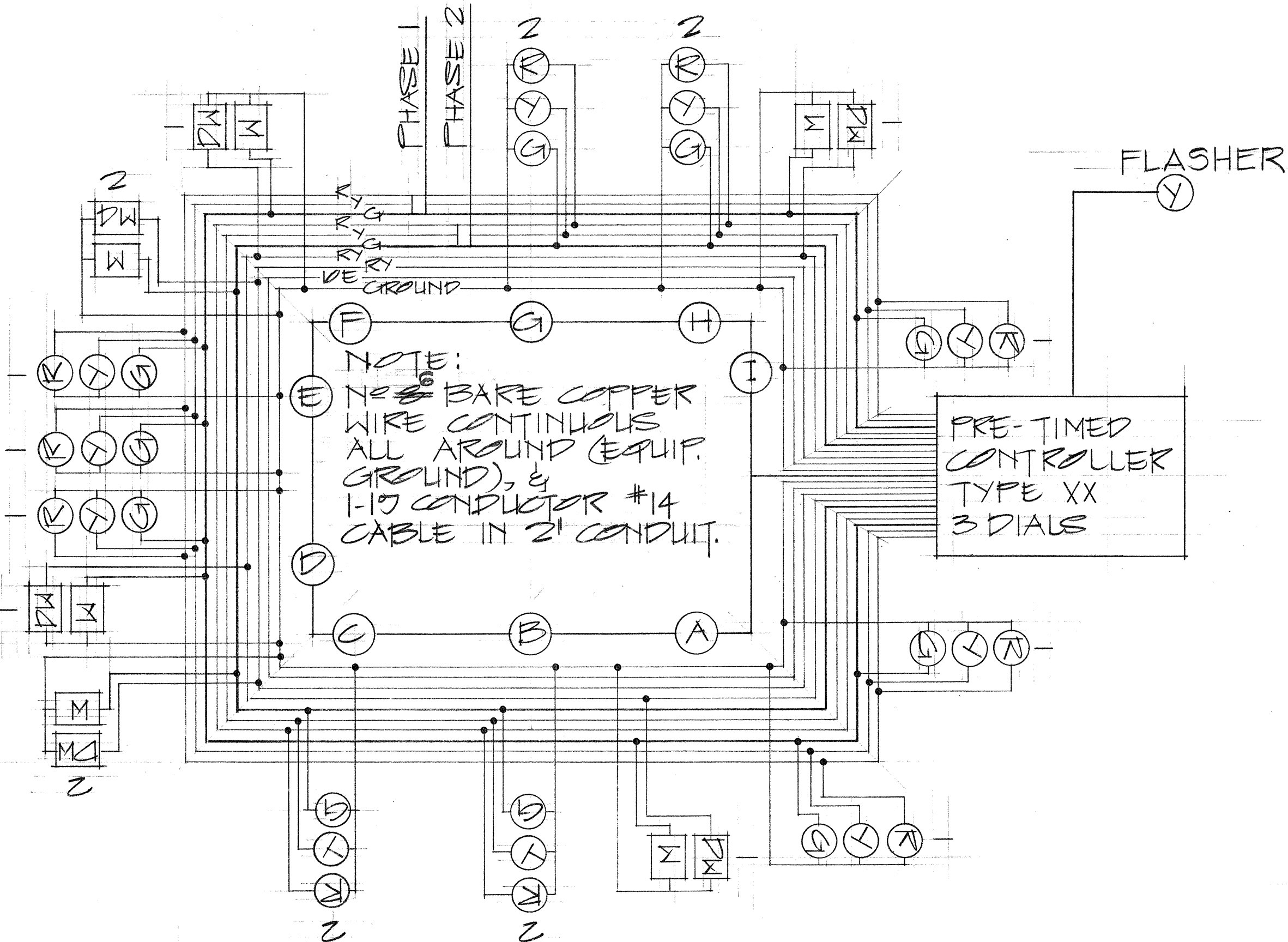
W3-4 SIGN W/  
FLASHING  
AMBER BEACON  
NOT TO SCALE

STATE OF HAWAII  
DEPARTMENT OF TRANSPORTATION  
HIGHWAYS DIVISION

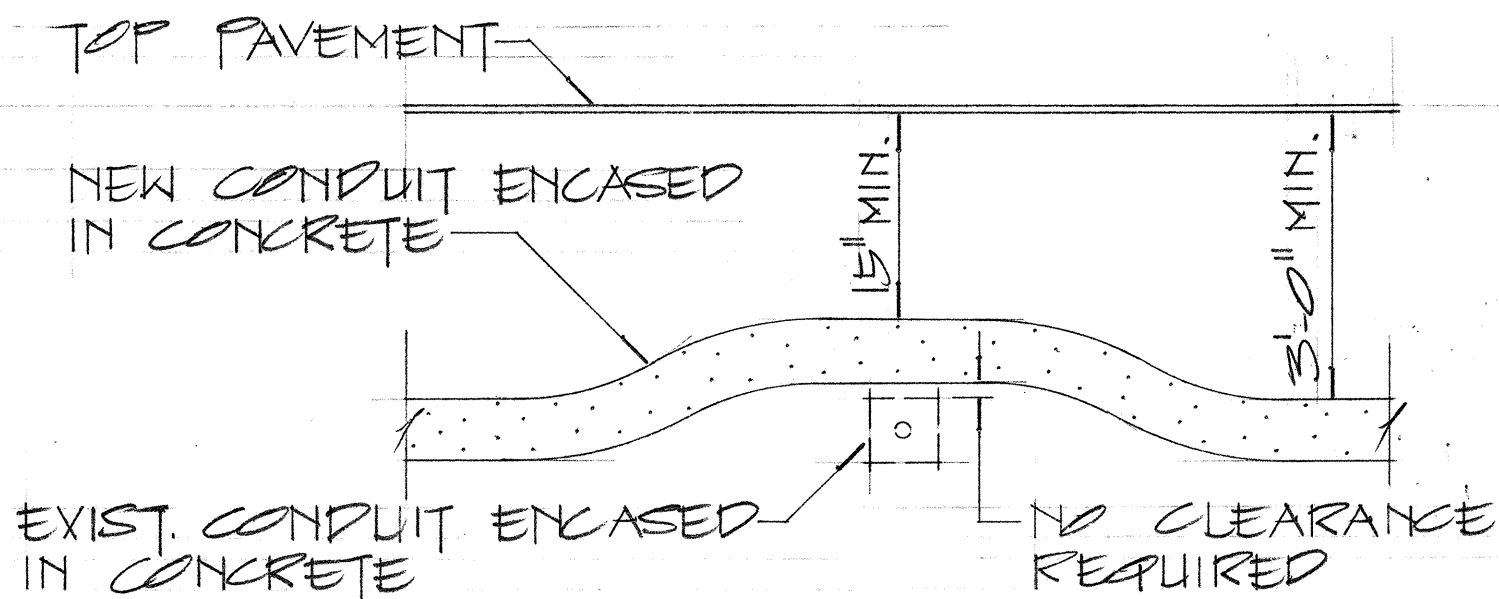
INTERSECTION IMPROVEMENTS  
MISCELLANEOUS DETAILS  
Proj. No. IIP-01-70(R)  
Scale: As Shown      Date: Dec., 1969  
SHEET No. 2 OF 2 SHEETS

### LEGEND

- NEW TRAFFIC SIGNAL STANDARD WITH 12" LENS ASSEMBLY OR "DW-W" PEDESTRIAN SIGNAL.
- NEW MAST ARM STANDARD WITH 12" LENS ASSEMBLY. MASTARM LENGTH AS INDICATED ON PLANS.
- NEW TYPE 'A' PULLBOX
- NEW TYPE 'B' PULLBOX
- NEW CONTROLLER (TYPE 'F' CABINET)
- 1-1/4" STEEL NEW RIGID STEEL CONDUIT.
- 1-2" NEW RIGID STEEL OR POLYVINYL CHLORIDE CONDUIT (NR & SIZE AS INDICATED). CONDUITS UNDER ROADWAYS SHALL BE ENCASED IN CONCRETE.
- EXISTING POWER OR ELECTRIC POLE.
- EXISTING UNDERGROUND UTILITIES
- TEL TELEPHONE CABLE
- SEWER SEWER LINE
- GAS GAS LINE
- OIL FUEL OIL LINE
- WATER WATER LINE

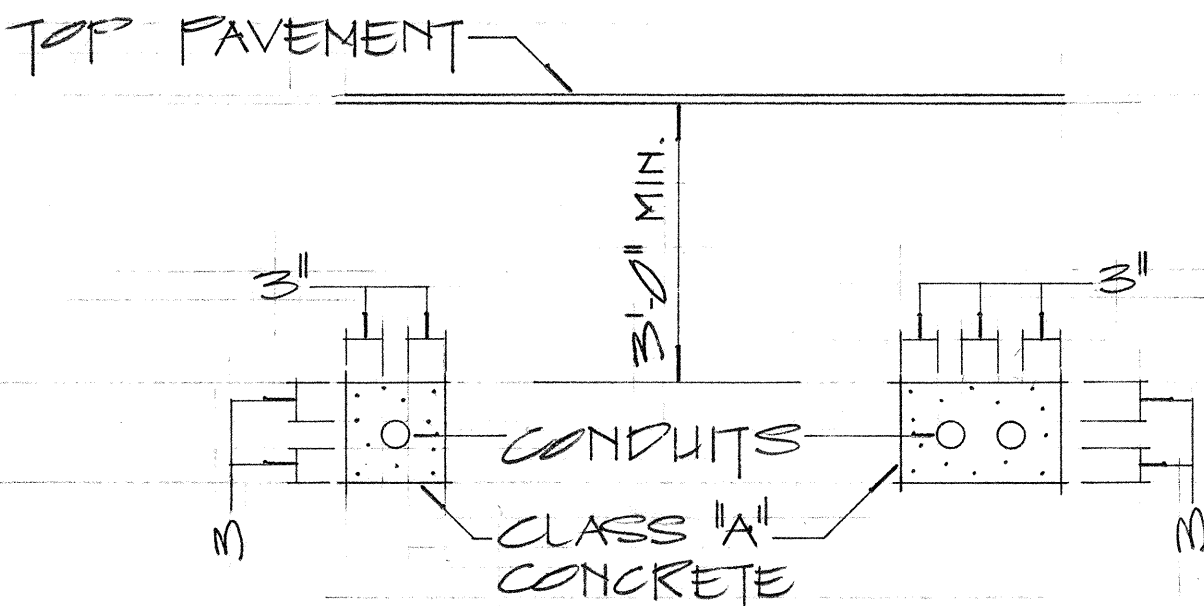


### WIRING DIAGRAM



### TYPICAL DETAIL EXISTING CONDUIT BY-PASS

NOT TO SCALE

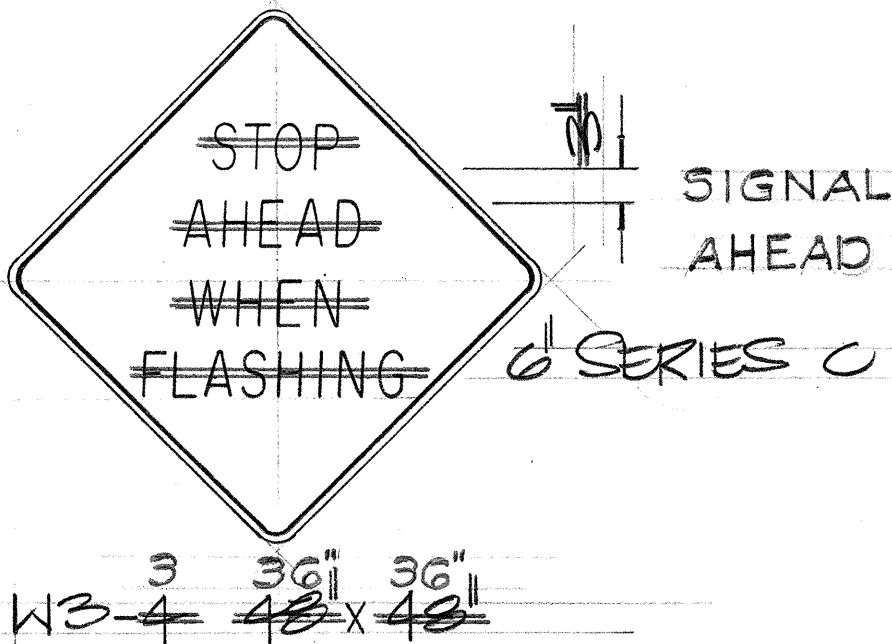


### TYPICAL DETAIL CONDUITS ENCASED IN CONCRETE

NOT TO SCALE



R4-7(R) 24" x 30"



### NOTES — TRAFFIC SIGNS

1. THE SHAPE, COLOR, PLATE DETAILS, LETTERING AND REFLECTORIZATION OF REGULATORY SIGNS (PREFIX R) AND WARNING SIGNS (PREFIX W) SHALL BE IN ACCORDANCE WITH THE "MANUAL ON UNIFORM TRAFFIC CONTROL DEVICES FOR STREETS AND HIGHWAYS", DATED JUNE 1961, AND THE BPR, MANUAL "STANDARD HIGHWAY SIGNS", DATED SEPT. 1961, UNLESS OTHERWISE SPECIFIED.
2. ALL REGULATORY AND WARNING SIGNS SHALL BE REFLECTORIZED UNLESS OTHERWISE SPECIFIED.
3. ALL REGULATORY AND WARNING SIGNS SHALL HAVE 3/8" BOLT HOLES DRILLED AT APPROPRIATE LOCATIONS UNLESS OTHERWISE SPECIFIED.