

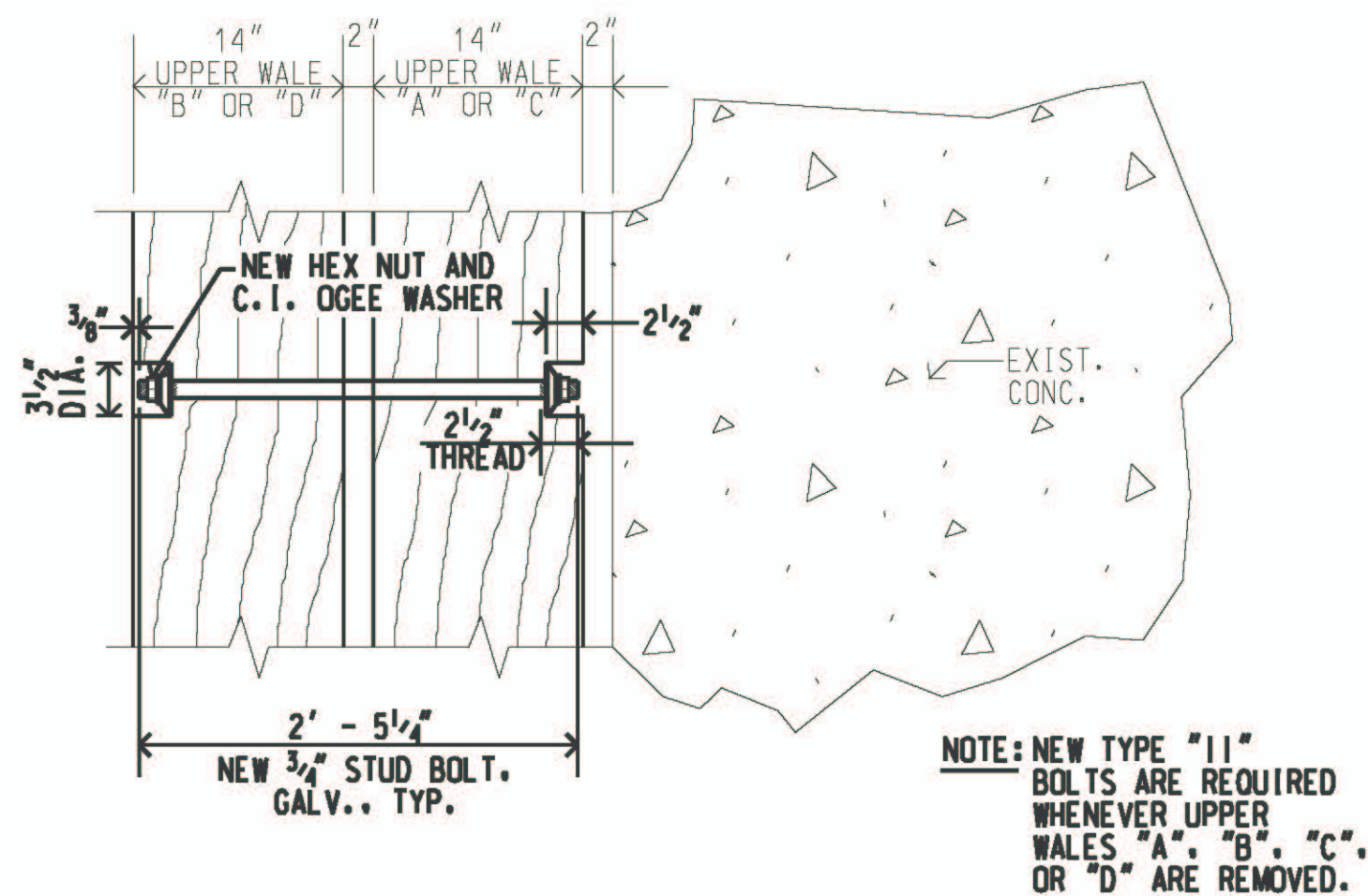
## GENERAL NOTES

- CONTRACTOR SHALL VERIFY CONDITIONS IN FIELD PRIOR TO BIDDING. EXISTING CONDITIONS ARE BASED ON THE BEST AVAILABLE INFORMATION. THE CONTRACTOR SHALL MAKE NO CLAIM FOR EXTRA COMPENSATION SHOULD ACTUAL EXISTING CONDITIONS DIFFER FROM THOSE SHOWN ON THE PLANS. THE CONTRACTOR SHALL VERIFY CONDITIONS AND DIMENSIONS IN THE FIELD PRIOR TO ORDERING MATERIALS. SEE THE SPECIFICATIONS FOR ADDITIONAL INFORMATION.
- CONTRACTOR SHALL EXERCISE CAUTION TO PREVENT DAMAGE TO EXISTING STRUCTURES, UTILITIES, AND EQUIPMENT IN THE AREA.
- CONTRACTOR SHALL COORDINATE ITS WORK WITH THE HARBORS DIVISION HAWAII DISTRICT MANAGER AND THE CONSTRUCTION ENGINEER SO AS TO MINIMIZE INTERFERENCE WITH HARBOR OPERATIONS.
- THE CONTRACTOR WILL NOT BE ALLOWED TO WORK WHEN A PASSANGER CRUISE VESSEL OR FUEL BARGE ARE BERTHED AT THE PIER. THE EXACT SCHEDULING OF THE WORK AND RESTRICTIONS ON THE CONTRACTOR'S ACTIVITIES WILL BE ESTABLISHED AT THE PRE-CONSTRUCTION MEETING.
- THE CONTRACTOR SHALL COMPLY WITH THE CLEAN WATER ACT AND THE STATE OF HAWAII DEPARTMENT OF TRANSPORTATION HARBORS DIVISION STORMWATER MANAGEMENT PROGRAM. NO POLLUTANTS ARE ALLOWED TO BE DISCHARGED DIRECTLY OR INDIRECTLY THROUGH THE HARBORS SMALL MS4 OR OTHER POTENTIAL PATHWAYS INTO ADJACENT HARBOR WATERS.
- THE CONTRACTOR SHALL SUBMIT A SITE-SPECIFIC BEST MANAGEMENT PRACTICE (BMP) PLAN TO HARBORS CONSTRUCTION ENGINEER FOR REVIEW AND ACCEPTANCE PRIOR TO THE START OF ANY CONSTRUCTION WORK. THE SITE-SPECIFIC BMP PLAN SHALL COMPLY WITH THE TEMPORARY WATER POLLUTION, DUST, AND EROSION CONTROL ARTICLE IN THE SPECIFICATIONS AND PROPOSAL.
- IN CASE OF SPILL, LEAK, OR OTHER RELEASE CONTAINING A HAZARDOUS SUBSTANCE OR OIL, THE CONTRACTOR SHALL NOTIFY APPROPRIATE FACILITY PERSONNEL, EMERGENCY RESPONSE AGENCIES, AND REGULATORY AGENCIES FOLLOWING NOTIFICATION PROCEDURES, AND SHALL NOTIFY HARBORS DIVISION ENVIRONMENTAL HOTLINE (808-587-1962) AND DESIGNATED PROJECT ENGINEER IMMEDIATELY (I.E. WITHIN 24-HOURS). SUCH CONTACT INFORMATION MUST BE SHOWN IN LOCATIONS THAT ARE READILY ACCESSIBLE AND AVAILABLE.
- ALL STRUCTURES AND PORTIONS OF STRUCTURES SHOWN ON THE PLANS ARE EXISTING UNLESS SPECIFICALLY NOTED. CLEAR WITH HAWAII ONE CALL CENTER (HOCC) BEFORE EXCAVATION (811) OR (866-427-7287).
- 6 CONC. HAUNCH FULL REPLACEMENTS AND 150 SF OF CONC. HAUNCH SPALL REPAIRS ARE INCLUDED IN THE PROPOSAL SCHEDULE FOR BIDDING PURPOSES. THE EXACT LOCATIONS OF THE CONC. HAUNCH REPAIRS AND REPLACEMENTS WILL BE DETERMINED IN THE FIELD AND THE QUANTITIES ARE SUBJECT TO CHANGE BY INSTRUCTION FROM THE CONSTRUCTION ENGINEER.
- ALL EXISTING TIRE FENDERS ARE TO BE INSPECTED AND APPROVED FOR RE-INSTALLATION BY THE CONSTRUCTION ENGINEER AND HARBOR AGENT. THE CONTRACTOR IS RESPONSIBLE FOR VERIFYING THE QUANTITIES OF VARIOUS SIZED TIRE FENDERS WITH THE CONSTRUCTION ENGINEER AND HARBOR AGENT BEFORE BIDDING AND CONSTRUCTION BEGINS.
- SEE THE SPECIFICATIONS FOR ADDITIONAL INFORMATION.

- 10 RUBBER TIRE BUMPERS REPLACEMENTS ARE INCLUDED IN THE PROPOSAL SCHEDULE FOR BIDDING PURPOSES. THE EXACT LOCATIONS OF THE RUBBER TIRE BUMPER REPLACEMENTS WILL BE DETERMINED IN THE FIELD AND THE QUANTITIES ARE SUBJECT TO CHANGE BY INSTRUCTION FROM THE CONSTRUCTION ENGINEER.
- AN ESTIMATED 20 NEW EYE BOLTS ARE TO BE INSTALLED ROUGHLY NEAR THE BENT NOS. 10 THROUGH 0. THE EXACT LOCATIONS WILL BE DETERMINED IN THE FIELD AND THE QUANTITIES ARE SUBJECT TO CHANGE BY INSTRUCTION FROM THE CONSTRUCTION ENGINEER. SEE DETAILS AND SPECIFICATIONS FOR MORE INFORMATION.
- THERE ARE AN ESTIMATED 115 RUBBER TIRE BUMPERS IN TOTAL TO COMPLETE THE FENDER SYSTEM. 13 LF OF CHAIN IS USED FOR EACH SINGLE RUBBER TIRE BUMPER. ALL OF THE CHAIN IS TO BE REPLACED AND WILL BE DETERMINED IN THE FIELD WITH QUANTITIES BEING SUBJECT TO CHANGE BY INSTRUCTION FROM THE CONSTRUCTION ENGINEER.. SEE DETAILS AND SPECIFICATIONS FOR MORE INFORMATION..
- TWO (2) NEW TIRE GROMMETS AND TWO (2) NEW SHACKLES WILL BE INSTALLED ON EACH RUBBER TIRE BUMPER. SEE DETAILS AND SPECIFICATIONS FOR MORE INFORMATION.

1	5/25/23	ADDENDUM NO.1	JM	AF	
REV	DATE	DESCRIPTION	BY	APPROVED	
STATE OF HAWAII DEPARTMENT OF TRANSPORTATION HARBORS DIVISION					
JOB TITLE FENDER REPAIRS AT PIER 3 HILO HARBOR, HILO, HAWAII					
PIER 3 - PLAN, ELEVATION, SECTION, AND NOTES					
DESIGNED BY: JM	JOB NUMBER S50208				SHEET 2
DRAWN BY: JM					2 OF 5 SHEETS
CHECKED BY: AF					
DATE: APR 2023					
SCALE: AS SHOWN					

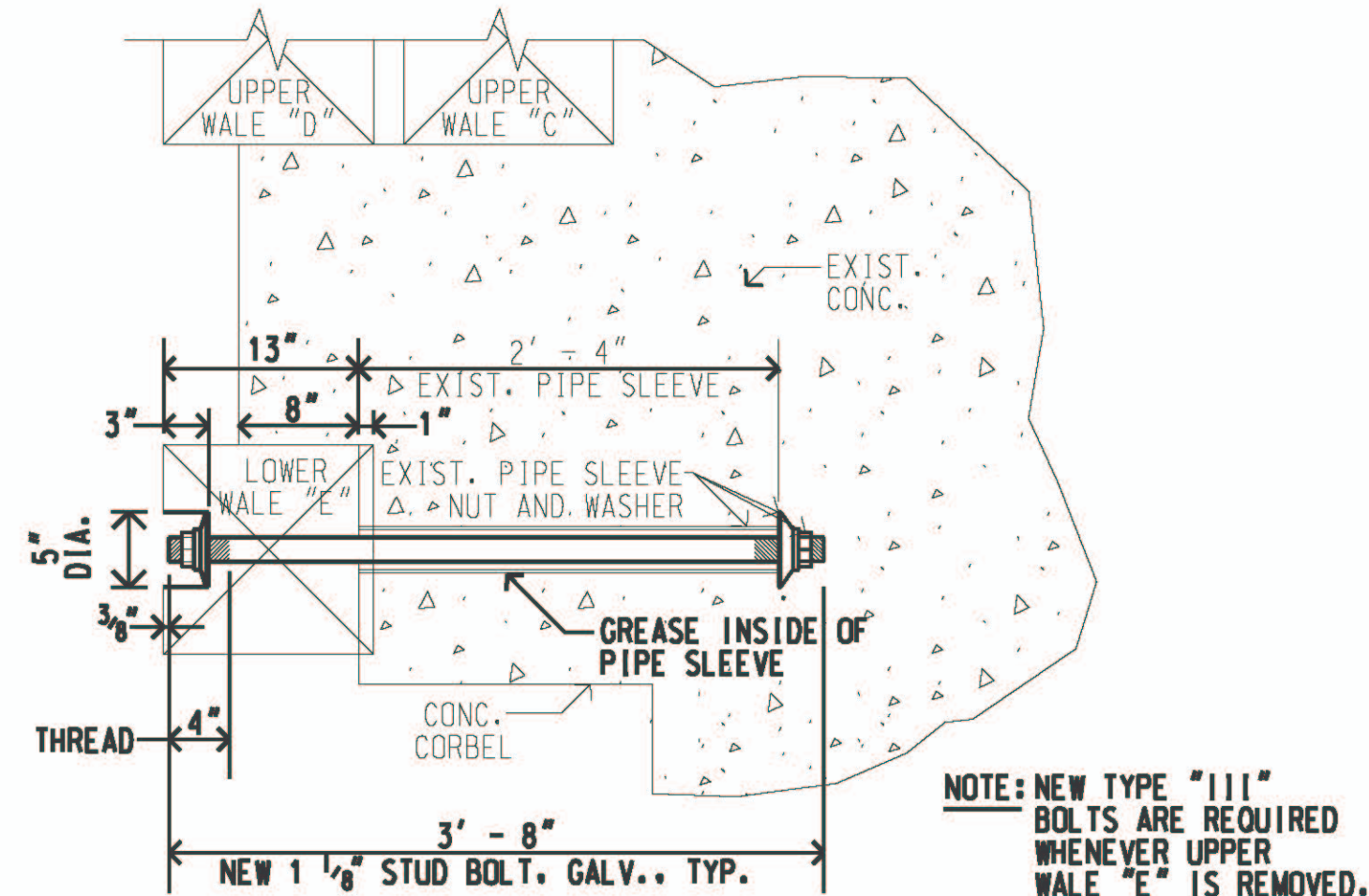




**PLAN - TYPE "II" BOLTS**

SCALE: 1 1/2" = 1' - 0"

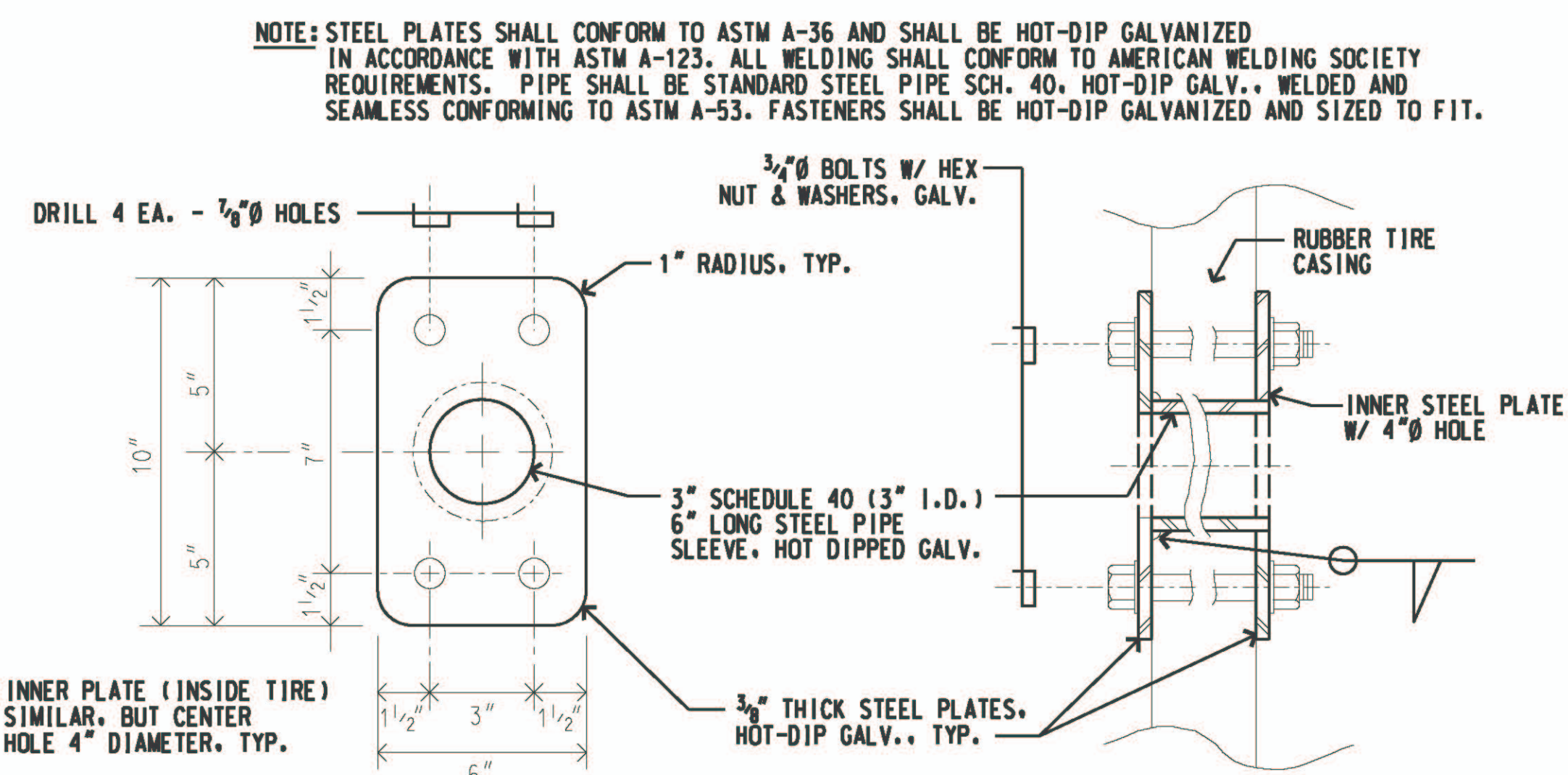
**A**  
**3**



**SECTION - TYPE "III" BOLTS**

SCALE: 1 1/2" = 1' - 0"

**D**  
**3**



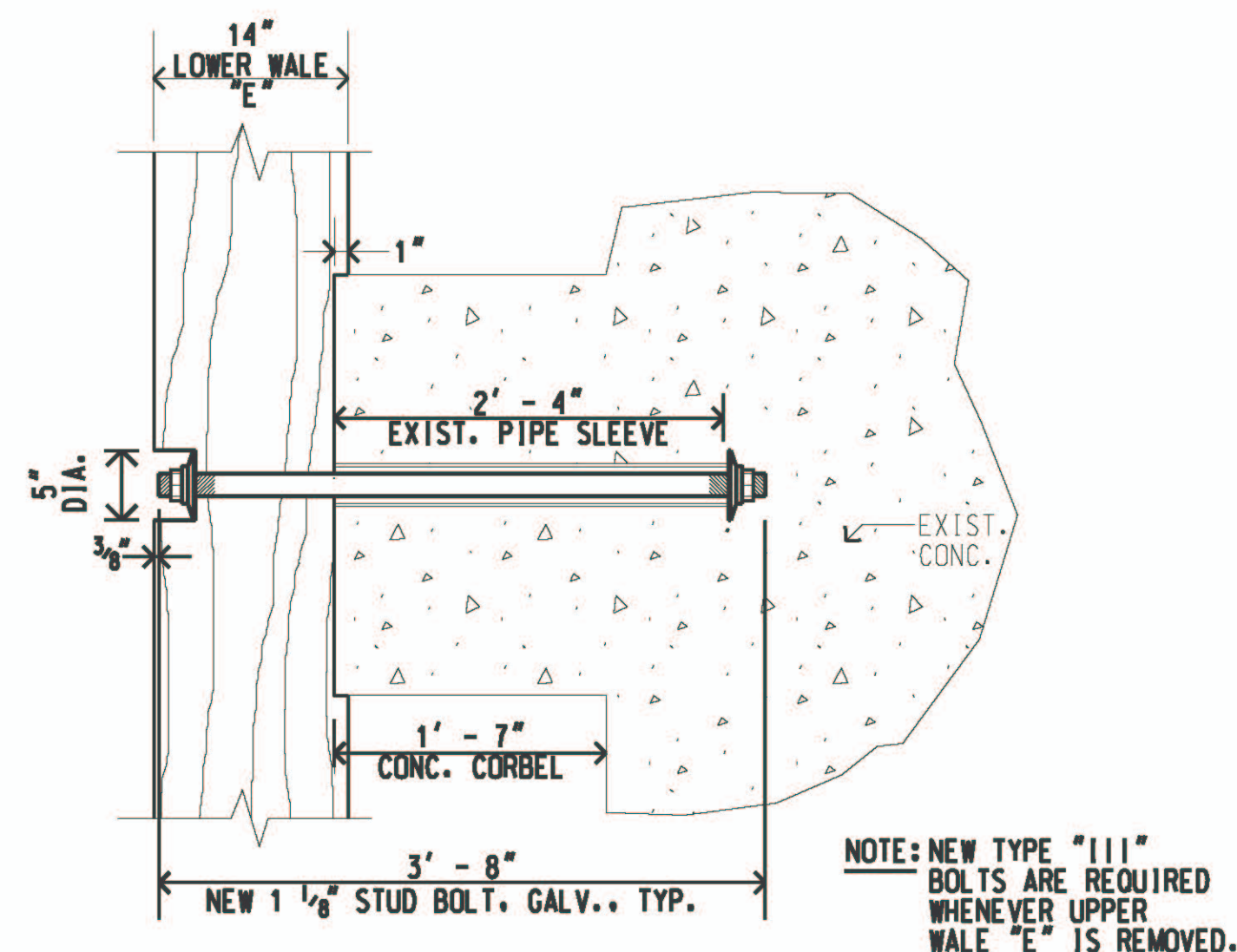
**PLAN**

**SECTION**

**TIRE GROMMET DETAIL**

SCALE: 3" = 1' - 0"

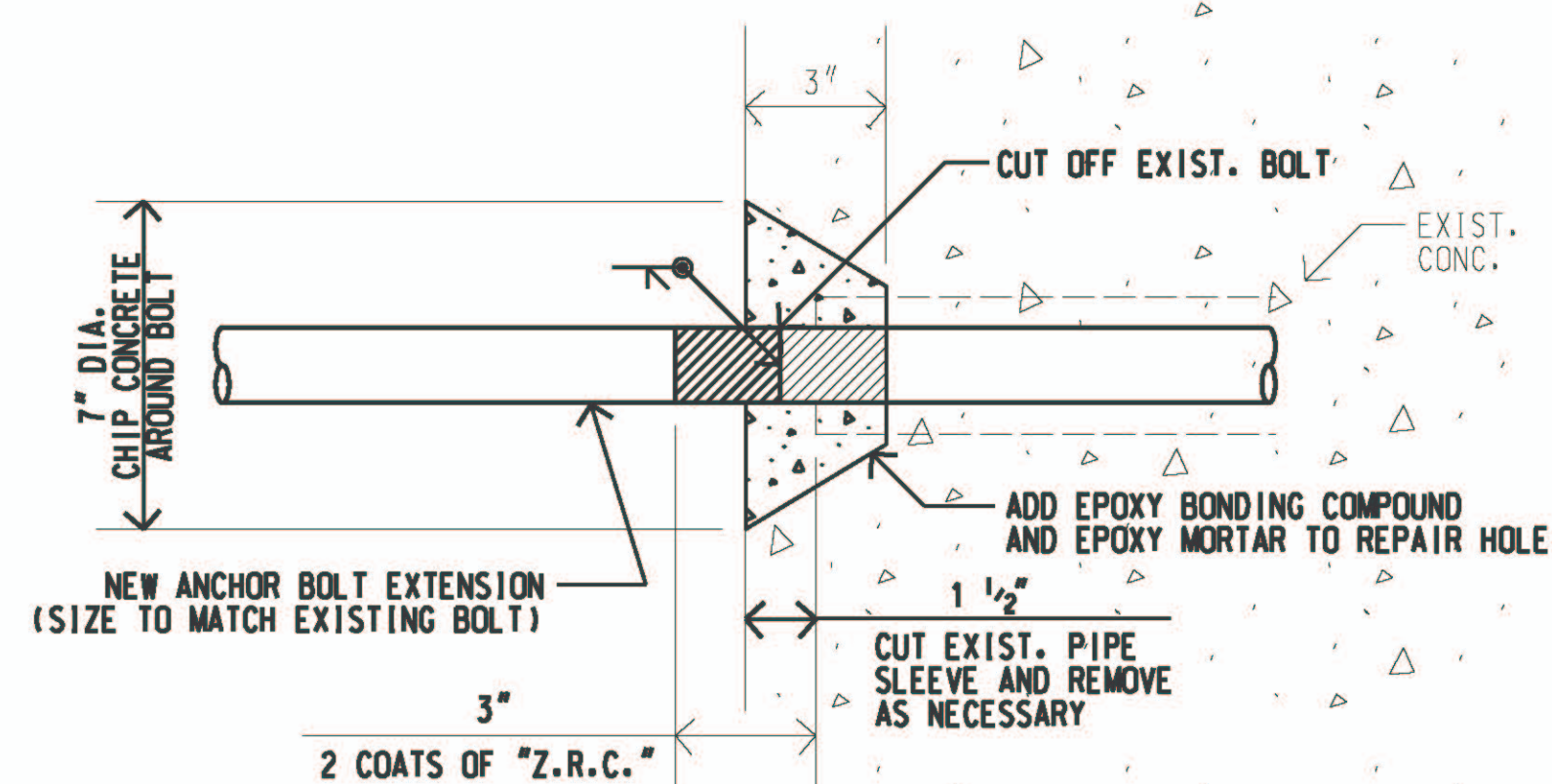
**F**  
**3**



**PLAN - TYPE "III" BOLTS**

SCALE: 1 1/2" = 1' - 0"

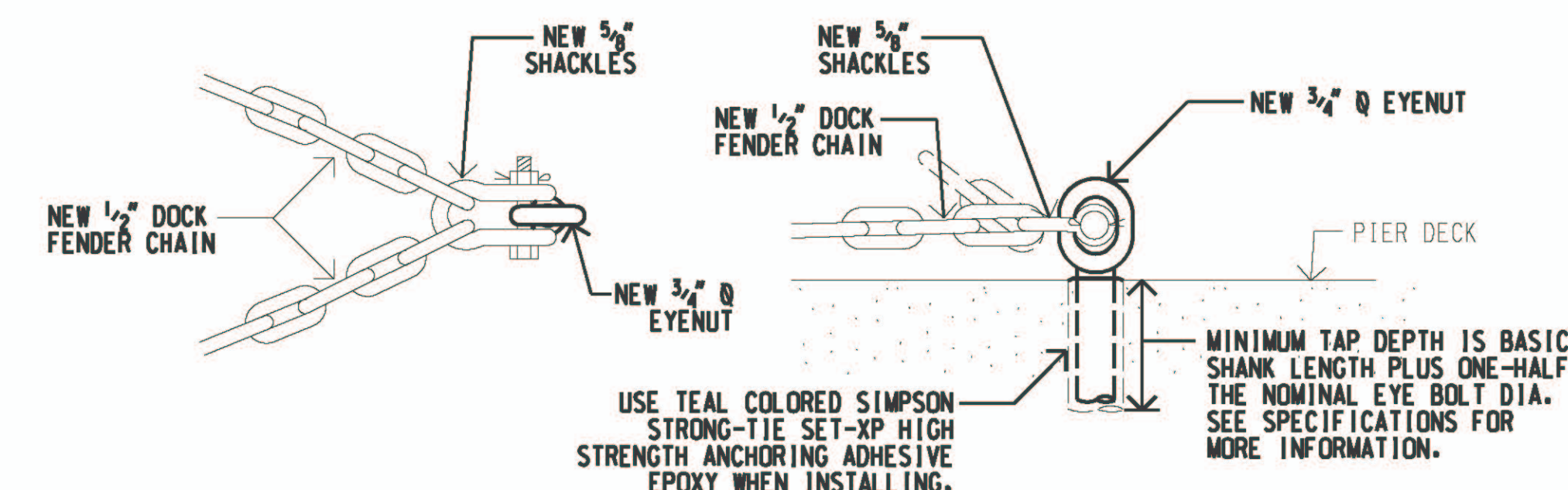
**B**  
**3**



**DETAIL - TYPE "III" BOLT EXTENSION**

SCALE: 3" = 1' - 0"

**E**  
**3**



**PLAN**

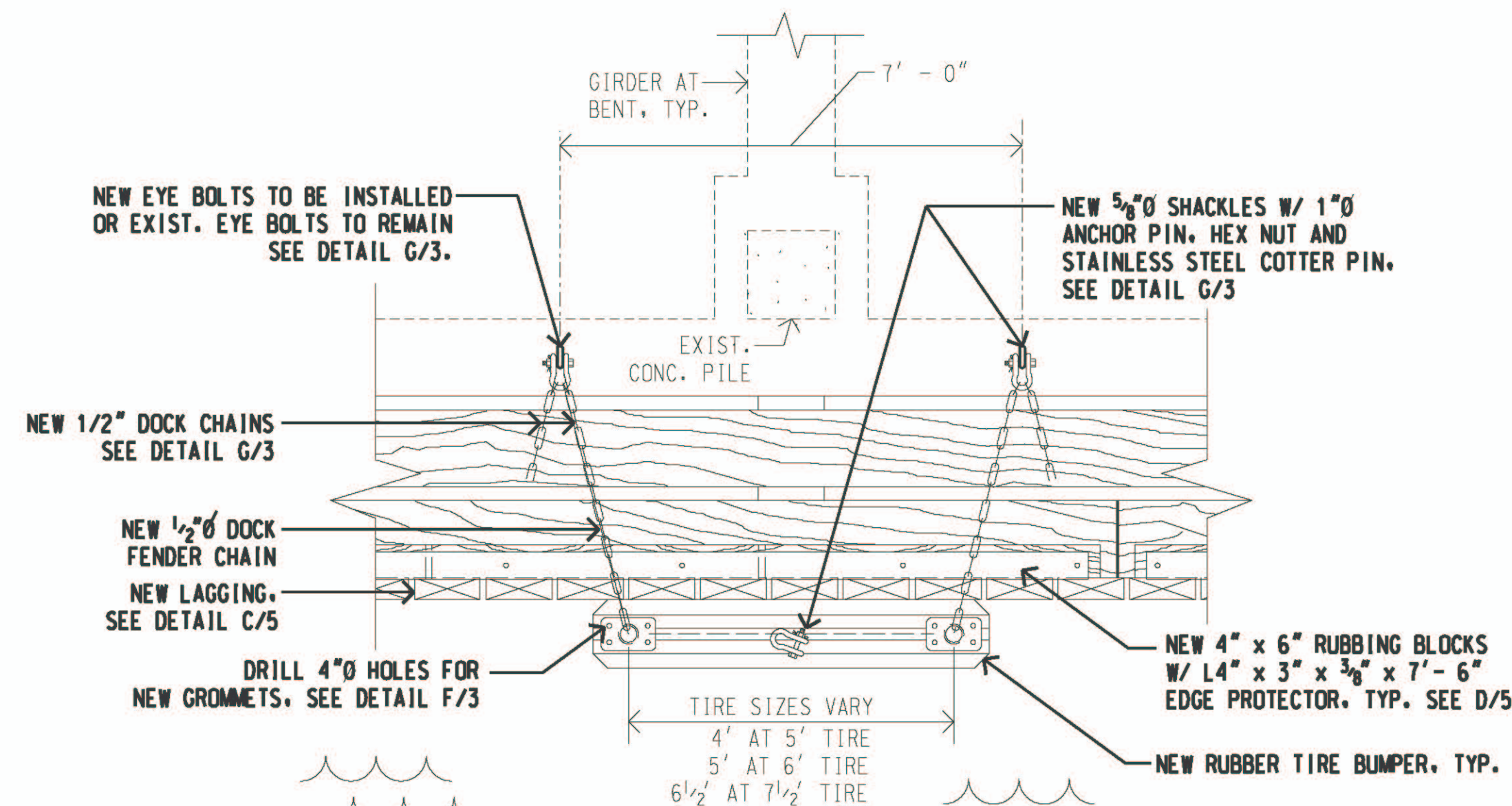
**SECTION**

**EYENUT ASSEMBLY DETAIL**

SCALE: 1 1/2" = 1' - 0"

**1** REVISED EYENUT ASSEMBLY DETAIL G/3

**G**  
**3**

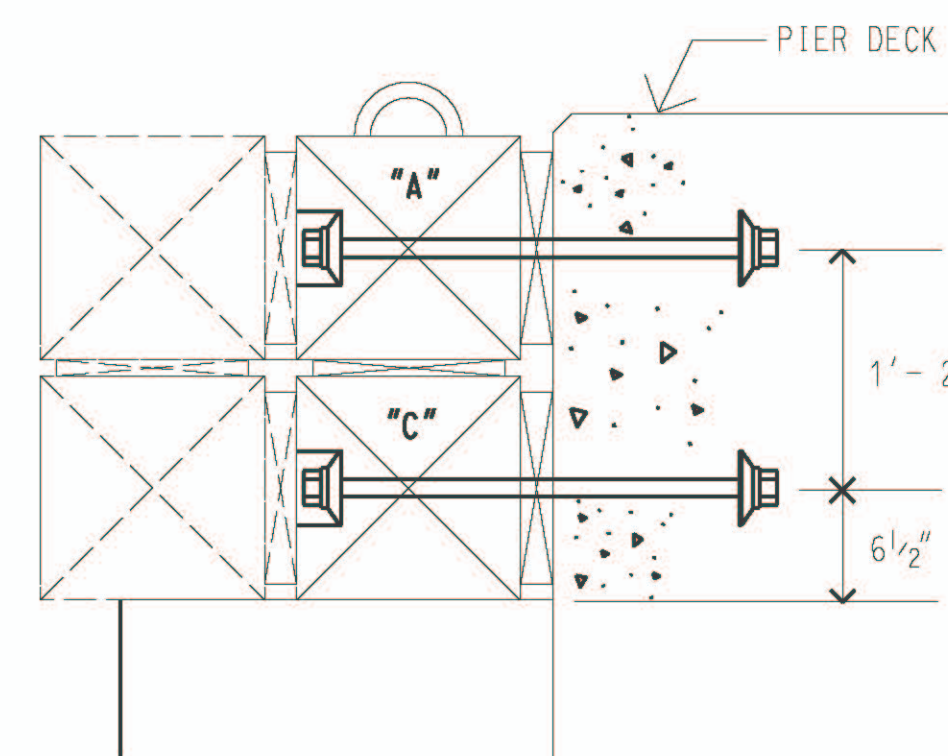


**NEW TIRE BUMPER ASSEMBLY DETAIL AT EYE-BOLTS**

SCALE: 1 1/2" = 1' - 0"

**1** REVISED NEW TIRE BUMPER ASSEMBLY DETAIL AT EYE-BOLTS DETAIL C/3

**C**  
**3**

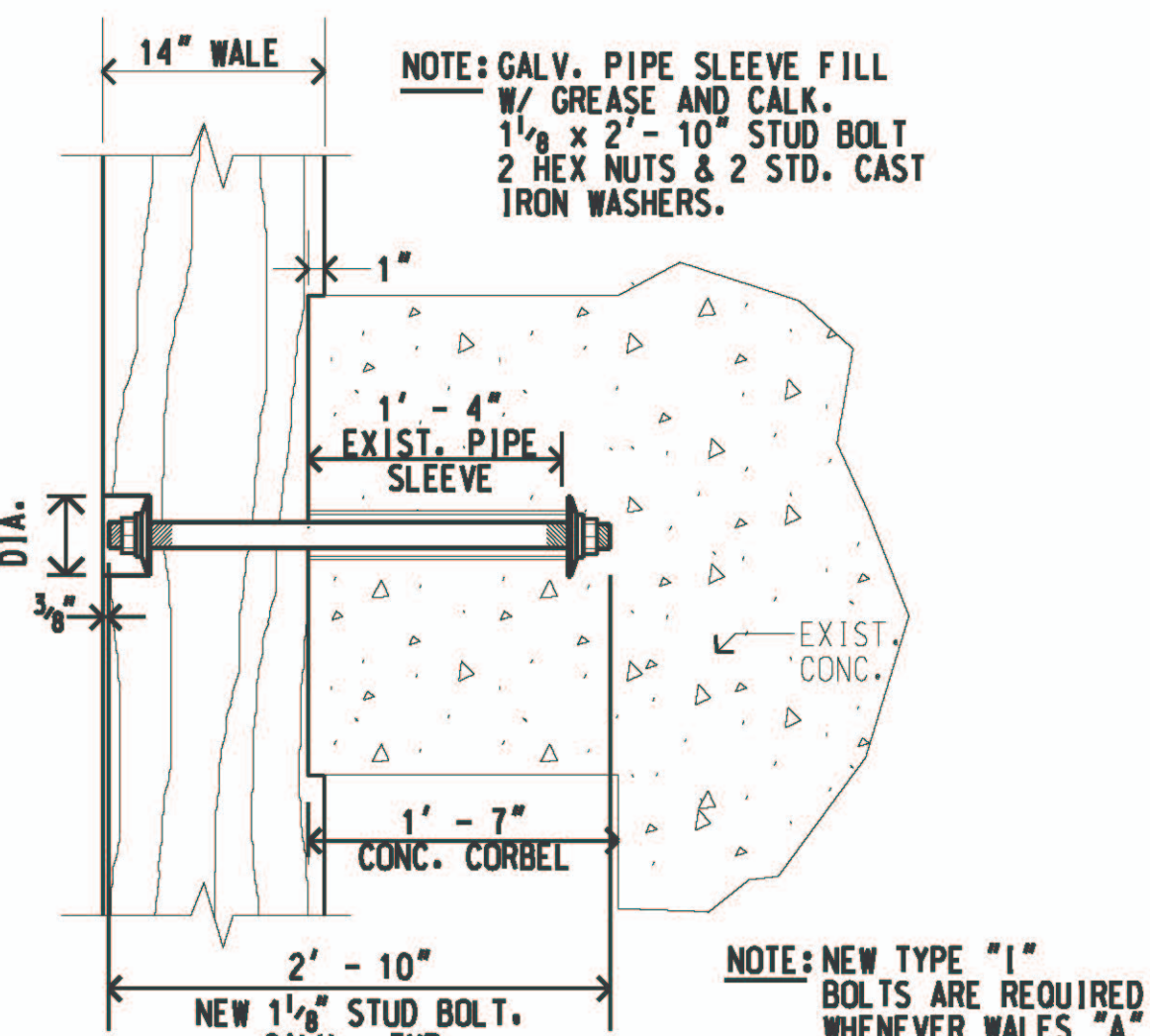


**SECTION**

**TYPE "I" BOLTS**

SCALE: 1 1/2" = 1' - 0"

**1** NEW TYPE "I" BOLTS DETAIL H/3



**PLAN**

**H**  
**3**

<b>1</b>	5/25/23	ADDENDUM NO. 1	JM	AF
REV	DATE	DESCRIPTION	BY	APPROVED
STATE OF HAWAII DEPARTMENT OF TRANSPORTATION HARBORS DIVISION				
JOB TITLE FENDER REPAIRS AT PIER 3 HILO HARBOR, HILO, HAWAII				
PIER 3 - REPAIR DETAILS				
DESIGNED BY: JM				SHEET
DRAWN BY: JM				<b>3</b>
CHECKED BY: AF				3 OF 5 SHTS.
DATE: APR 2023				
SCALE: AS SHOWN				