

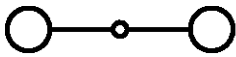
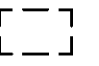

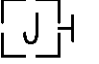

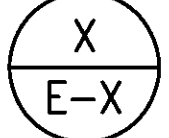


4/27/23-16:44 Y:\04\044 088 Hilo Harbor Pier 1 Light Poles\044 088 E-1.001.dwg

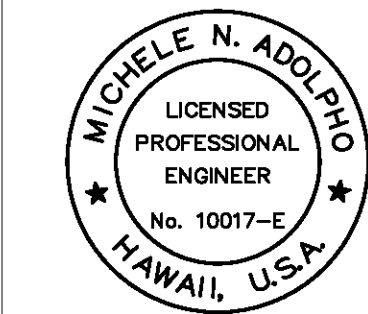
ELECTRICAL SYMBOL LIST		
SYMBOL		DESCRIPTION
EXISTING	NEW	
-----e-----		UNDERGROUND DUCTLINE
 B1	 B1	HIGH MAST LIGHT POLE ASSEMBLY (LIGHT POLE B1 INDICATED)
		STREET LIGHT STANDARD, DOUBLE HEAD ASSEMBLY
		ELECTRICAL MANHOLE OR HANDHOLE, TYPE AS INDICATED
		PANELBOARD
		JUNCTION BOX, WALL MOUNTED
		NOTE INDICATOR
		DETAIL INDICATOR: TOP HALF DENOTES DETAIL NUMBER, BOTTOM HALF DENOTES SHEET NUMBER
	ELEC	ELECTRICAL
	EHH	ELECTRICAL HANDHOLE
	GND	GROUND
	PVC	POLYVINYL CHLORIDE
	X	DENOTES DEMOLITION/REMOVAL

GENERAL ELECTRICAL NOTES:

1. VERIFY ALL EXISTING CONDITIONS AND DIMENSIONS IN THE FIELD PRIOR TO COMMENCEMENT OF NEW WORK. EXERCISE CAUTION TO PREVENT DAMAGE TO EXISTING STRUCTURES, UTILITIES AND EQUIPMENT IN THE AREA.
2. EXISTING CONDITIONS: ALL EXISTING DUCTLINES AND UTILITIES INDICATED ON THE DRAWINGS ARE APPROXIMATE LOCATIONS BASED UPON AVAILABLE "AS-BUILT" DRAWINGS AND VISUAL FIELD INVESTIGATION.
3. THE WORK SCHEDULE SHALL BE COORDINATED WITH USERS, HARBORS DIVISION CONSTRUCTION ENGINEER AND HARBORS DIVISION HAWAII DISTRICT MANAGER.
4. THE CONTRACTOR SHALL SCHEDULE ALL WORK TO MINIMIZE DISRUPTION OF USERS' OPERATIONS.
5. ALL EXISTING ELECTRICAL EQUIPMENT AND FACILITIES NOT SCHEDULED FOR DEMOLITION SHALL REMAIN OPERATIONAL DURING CONSTRUCTION. CONTRACTOR TO MINIMIZE OUTAGES AND COORDINATE WITH THE HARBORS DIVISION CONSTRUCTION ENGINEER, HARBORS DIVISION HAWAII DISTRICT, AND ALL USERS AND TENANTS AT LEAST TWO WEEKS PRIOR TO ALL OUTAGES.
6. CONTRACTOR SHALL SCHEDULE IN WRITING ALL DEMOLITION WORK WITH USERS AND HARBORS DIVISION CONSTRUCTION ENGINEER. MINIMUM OF 14 CALENDAR DAYS ADVANCE NOTICE SHALL BE GIVEN.
7. REMOVE AND DISPOSE OF ALL ELECTRICAL EQUIPMENT AND CONDUCTORS INDICATED FOR DEMOLITION. UNDERGROUND CONDUIT SHALL BE ABANDONED IN-PLACE UNLESS OTHERWISE INDICATED.

GALVANIZED STEEL LIGHT POLE NOTES:

1. MATERIAL SPECIFICATIONS:
POLE SHAFT – ASTM A572 GRADE 65
BASE PLATE – ASTM A572 GRADE 50
STRUCTURAL PLATES – ASTM A572 GRADE 50
MISC. PLATES – ASTM A36
ANCHOR BOLTS – TYPE 316 STAINLESS STEEL GRADE 30 MIN.
NUTS AND WASHERS – TYPE 316 STAINLESS STEEL
2. ENTIRE STANDARD INCLUDING LUMINAIRE MOUNTING BRACKET SHALL BE HOT DIP GALVANIZED IN ACCORDANCE WITH ASTM A-123.
3. WELDING SHALL BE IN ACCORDANCE WITH AWS D1.1 MOST RECENT EDITION.
4. ALL MOUNTING HARDWARE SHALL BE STAINLESS STEEL TYPE 316.
5. DESIGN SPEED: AASHTO LRFDLTS-1, FATIGUE CATEGORY 1. 105 MPH BASIC WIND SPEED, 1.0 IMPORTANCE FACTOR, 1.14 GUST EFFECT FACTOR INCLUDING BRACKET AND LUMINAIRES.
6. LONGITUDINAL SEAM WELDS TO BE MINIMUM 60% PENETRATION. BOTTOM 6" AT BASE PLATE AND FEMALE PORTION OF SLIP JOINT +6" TO BE 100% PENETRATION.
7. FULL PENETRATION WELDS TO BE 100% UT INSPECTED PRIOR TO GALVANIZING.
8. REFER TO MANUFACTURER'S GENERAL INSTALLATION INSTRUCTIONS PRIOR TO ASSEMBLY. COORDINATE INSTALLATION REQUIREMENTS WITH THE ACTUAL EQUIPMENT SUPPLIED.
9. MANUFACTURER TO PROVIDE PAPER AND METAL ANCHOR BOLT TEMPLATES.
10. STEEL TO BE MELTED AND MANUFACTURED IN THE USA.
11. PAINT LIGHT POLE ASSEMBLY INCLUDING EXPOSED PORTIONS OF THE ANCHOR BOLTS, NUTS, AND WASHERS, POLE INTERIOR UP TO FOUR FEET (MEASURED UPWARDS FROM THE BASE PLATE), FIXTURE BRACKET, AND CONCRETE PEDESTAL IN ACCORDANCE WITH PAINTING SPECIFICATIONS. DO NOT FIELD-PAINT LUMINAIRES.



THIS WORK WAS PREPARED BY ME
OR UNDER MY SUPERVISION
EXP 4-30-24
Michele N. Adolp
ECS, INC.

REVISION	DATE	DESCRIPTION	BY	APPROVED
STATE OF HAWAII DEPARTMENT OF TRANSPORTATION HARBORS DIVISION				
JOB TITLE REPAIR LIGHT POLES AND PEDESTALS AT PIER 1 HILO HARBOR, HAWAII				
SHEET TITLE ELECTRICAL SYMBOL LIST AND ELECTRICAL NOTES				
DESIGNED BY: MA	JOB NUMBER S50201			SHEET E-1
DRAWN BY: CAD				9 of 19 SHTS.
CHECKED BY: MA				
DATE: 04/2023 SCALE: AS SHOWN				