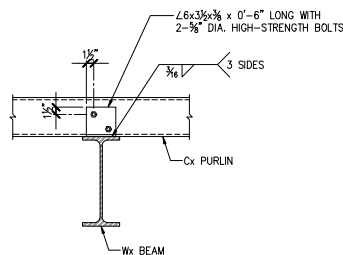
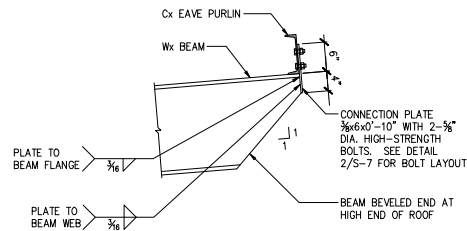


- NOTES:
1. MINIMUM SECTION PROPERTIES OF STEEL DECK AT ROOF SHALL BE:
 $I = 0.240 \text{ IN}^4/\text{FT}$
 $S+ = 0.228 \text{ IN}^3/\text{FT}$
 $S- = 0.236 \text{ IN}^3/\text{FT}$
 DEPTH = 1.5 IN
 GAGE = 20
 2. PROVIDE #12 STAINLESS STEEL SCREWS AT 24" AT SIDELAPS.

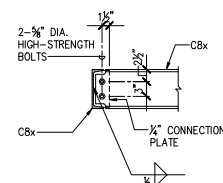
1 STEEL DECK CONNECTIONS
S-7 NOT TO SCALE



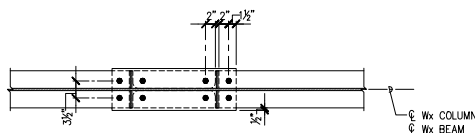
2 TYPICAL PURLIN TO BEAM CONNECTION
S-7 SCALE: 1" = 1'-0"



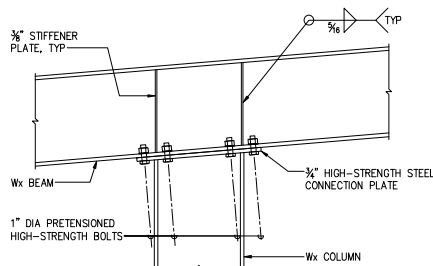
3 EAVE PURLIN TO BEAM CONNECTION
S-7 SCALE: 1" = 1'-0"



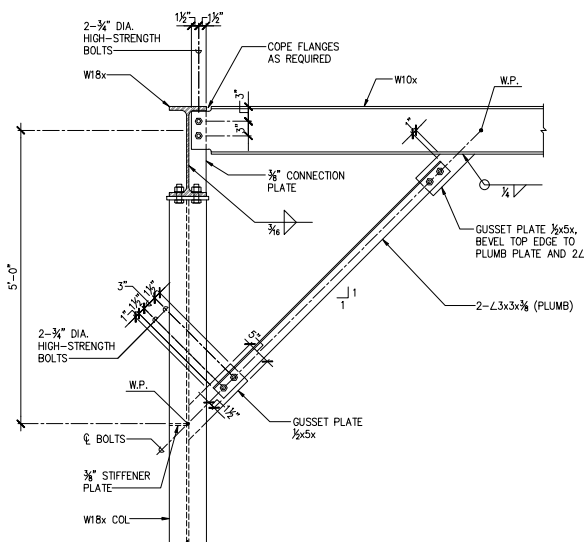
4 TYPICAL Cx TO Cx CONNECTION
S-7 SCALE: 1" = 1'-0"



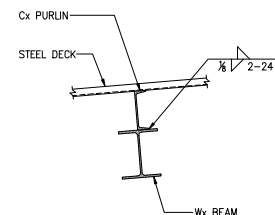
PLAN



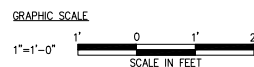
5 BEAM TO COLUMN CONNECTION
S-7 SCALE: 1" = 1'-0"



6 TYPICAL KNEE BRACE DETAIL
S-7 SCALE: 1" = 1'-0"



7 SECTION
S-7 SCALE: 1" = 1'-0"



	REV		DATE	DESCRIPTION	BY	APPROVED
	STATE OF HAWAII DEPARTMENT OF TRANSPORTATION HARBORS DIVISION					
	JOB TITLE REPAIR GUARD SHACK HILO HARBOR, HAWAII					
	SHEET TITLE STRUCTURAL STEEL DETAILS					
DESIGNED BY: LL DRAWN BY: DL CHECKED BY: BK DATE: FEB, 2023 EXPIRATION DATE OF LICENSE: APRIL 30, 2024		JOB NUMBER H.C. 50173		SHEET S-7 18 OF 22 SHEETS		