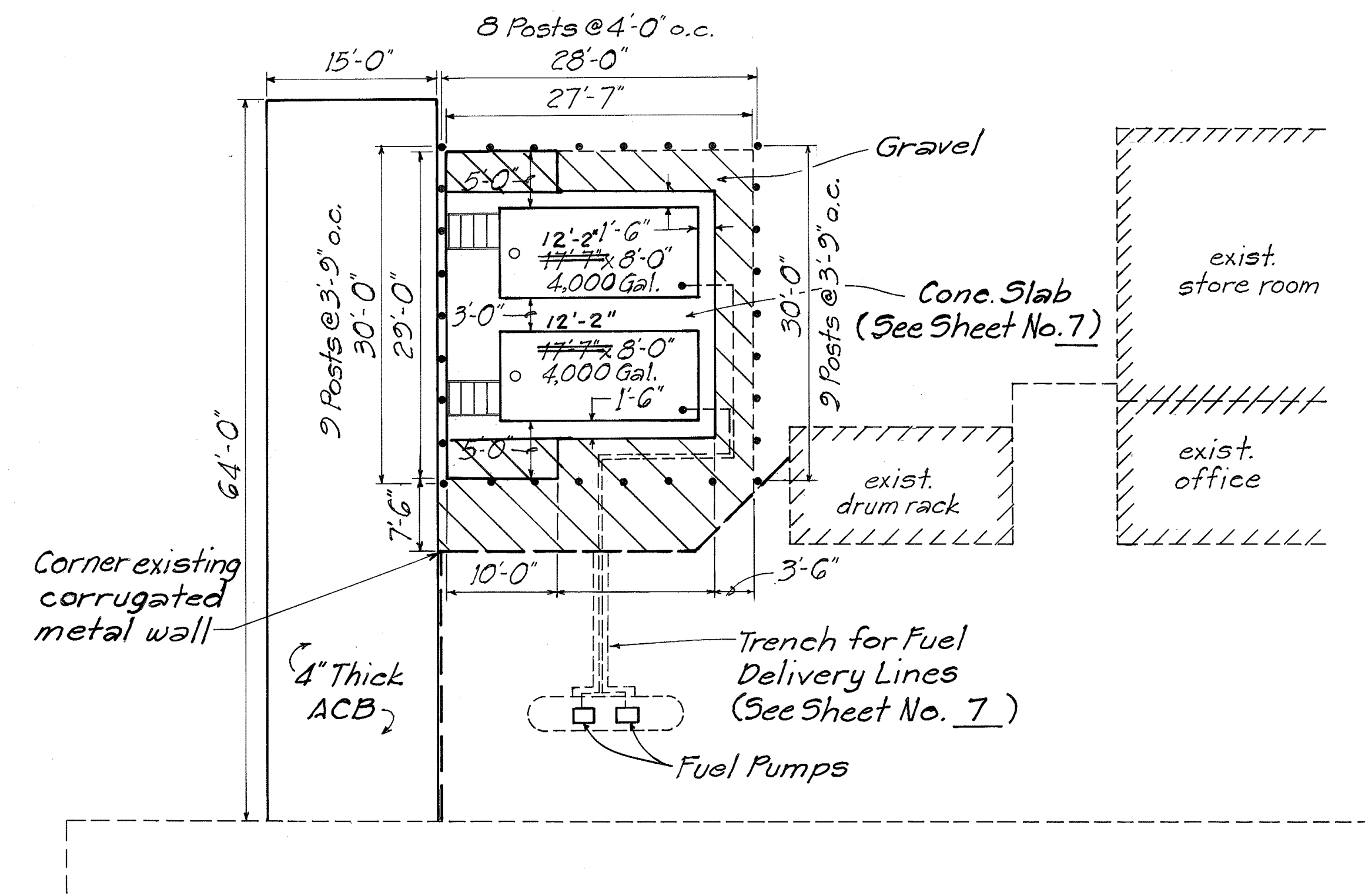


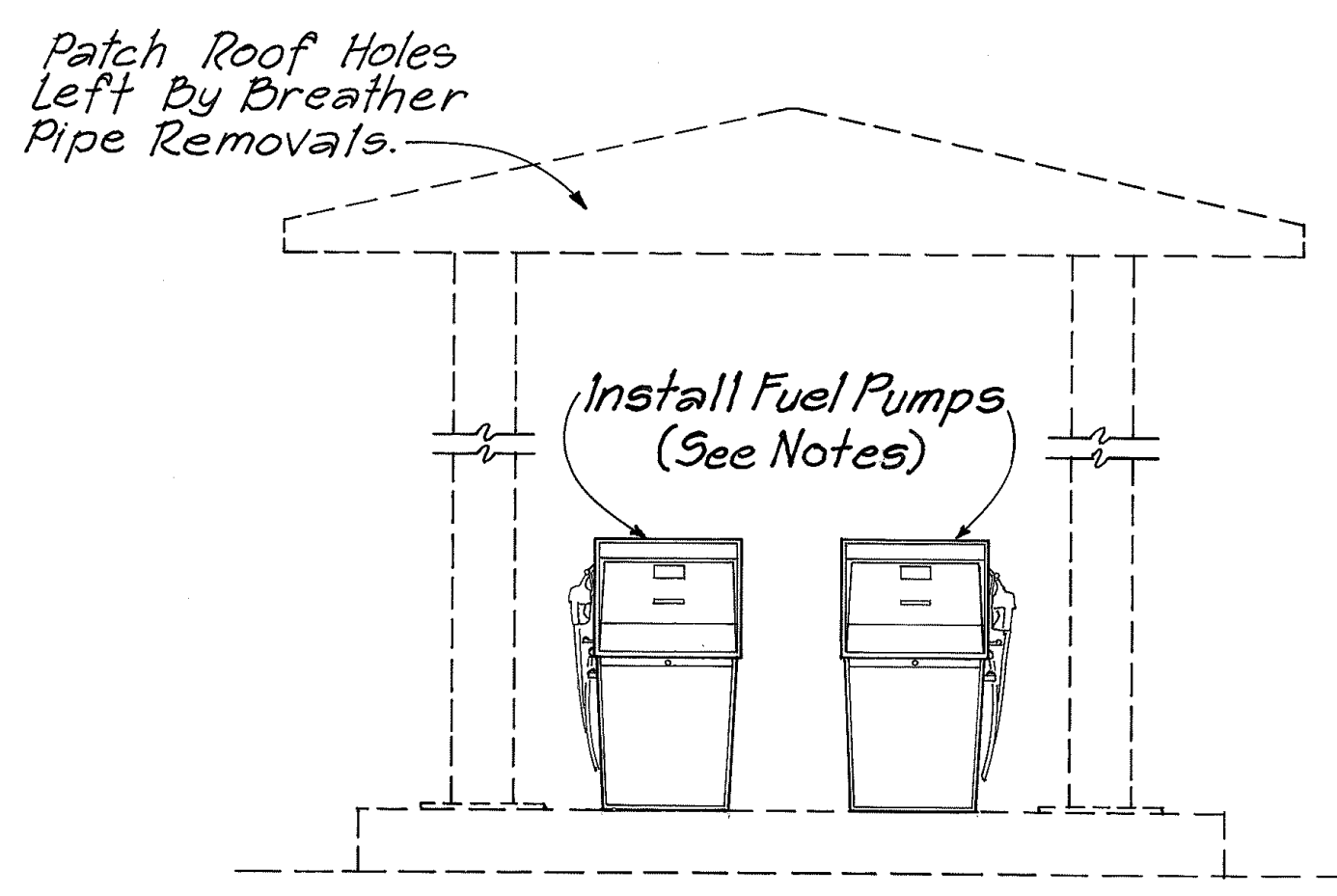
FED. ROAD DIST. NO.	STATE	PROJ. NO.	FISCAL YEAR	SHEET NO.	TOTAL SHEETS
HAWAII	HAW.	HWY-H-01-93M	1993	6	8

NOTES:

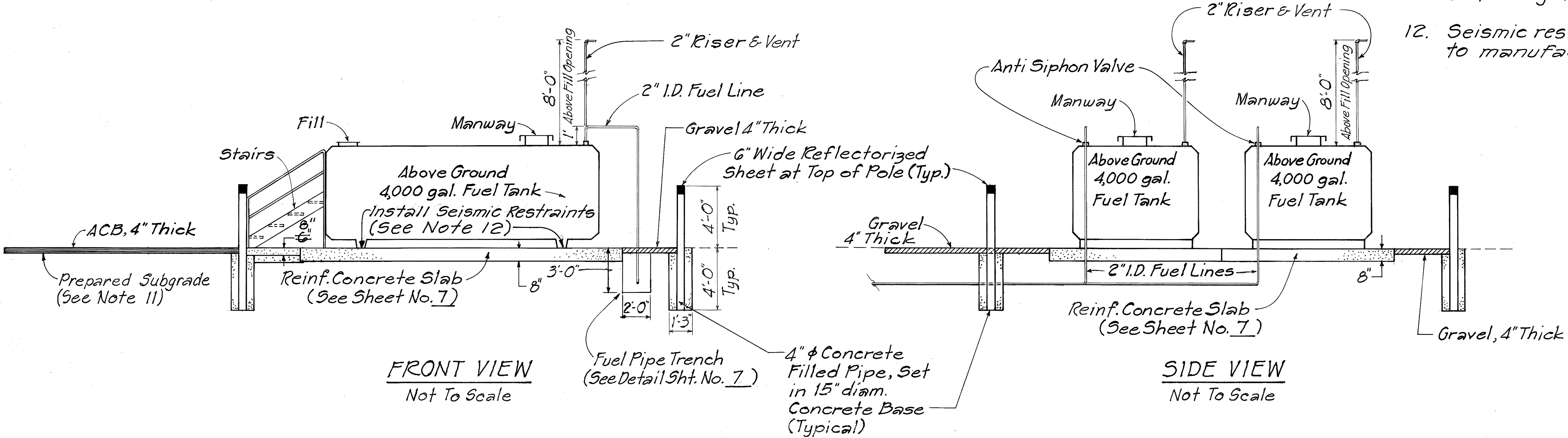
1. Provide all equipment, material and labor for installing and testing the complete above ground fuel tanks, dispensing and ticketing systems, modify and install electrical conduit outlets at former dispenser locations to the new dispensers and construct an asphalt driveway to the tanks.
2. Installation shall comply with all applicable County, State and Federal Regulations and Guidelines.
3. Above ground fuel tanks to be installed shall be: CONVAULT 4,000 Gallon tanks, or approved equivalents. All tank accessories required for a complete installation shall be included.
4. Fuel dispensers to be installed shall be: Bennet Fleetmaster Model 3213 Self-Contained, Single Product Pump Stations, or approved equivalents. All dispensers to be equipped with ticket printing equipment. Service hoses to be 18' long (min.), U.L. listed and safety breakaway. Nozzles to be U.L. listed and automatic shutoff. All accessories and coupling hardware (shear valves, etc.) necessary for a complete installation shall be U.L. listed and included in this installation.
5. Ticket printing equipment shall be installed in conjunction with fuel dispensers and will be compatible with currently used tickets. (See Sheet No. 9)
6. Fuel dispensers shall be installed in existing pump locations. Pump connections and other necessary details to conform to manufacturer's recommendations.
7. Stair units shall be installed for access to the top of each tank. Stair units shown on these plans are CONVAULT four step model, or approved equivalent.
8. Install steel guard posts as shown on these plans.
9. Reinforced concrete slab details are on Sheet No. 7.
10. Gravel bed is to consist of material equivalent to the State Standard for clean, #2 Coarse Aggregate or approved equivalent, and be 4" Thick.
11. ACB Driveway to be placed on formed, compacted subgrade conforming to State Spec. No 203.02(C).
12. Seismic restraints shall be galvanized steel and conform to manufacturer's specifications.



INSTALLATION PLAN
Not To Scale



PUMP STATION ELEVATION
Not To Scale



FRONT VIEW
Not To Scale

SIDE VIEW
Not To Scale

STATE OF HAWAII
DEPARTMENT OF TRANSPORTATION
HIGHWAYS DIVISION

FUEL SYSTEM
INSTALLATION PLAN
WAIMEA BASEYARD
PROJ. No. HWY-H-01-93M
Scale: As Noted Date: March 1993
SHEET NO. 2 OF 2 SHEETS

SURVEY PLOTTED BY	DATE
DRAWN BY	
DESIGNED BY	
QUANTITIES BY	
CHECKED BY	
ORIGINAL PLAN	
NOTE BOOK	
NO.	