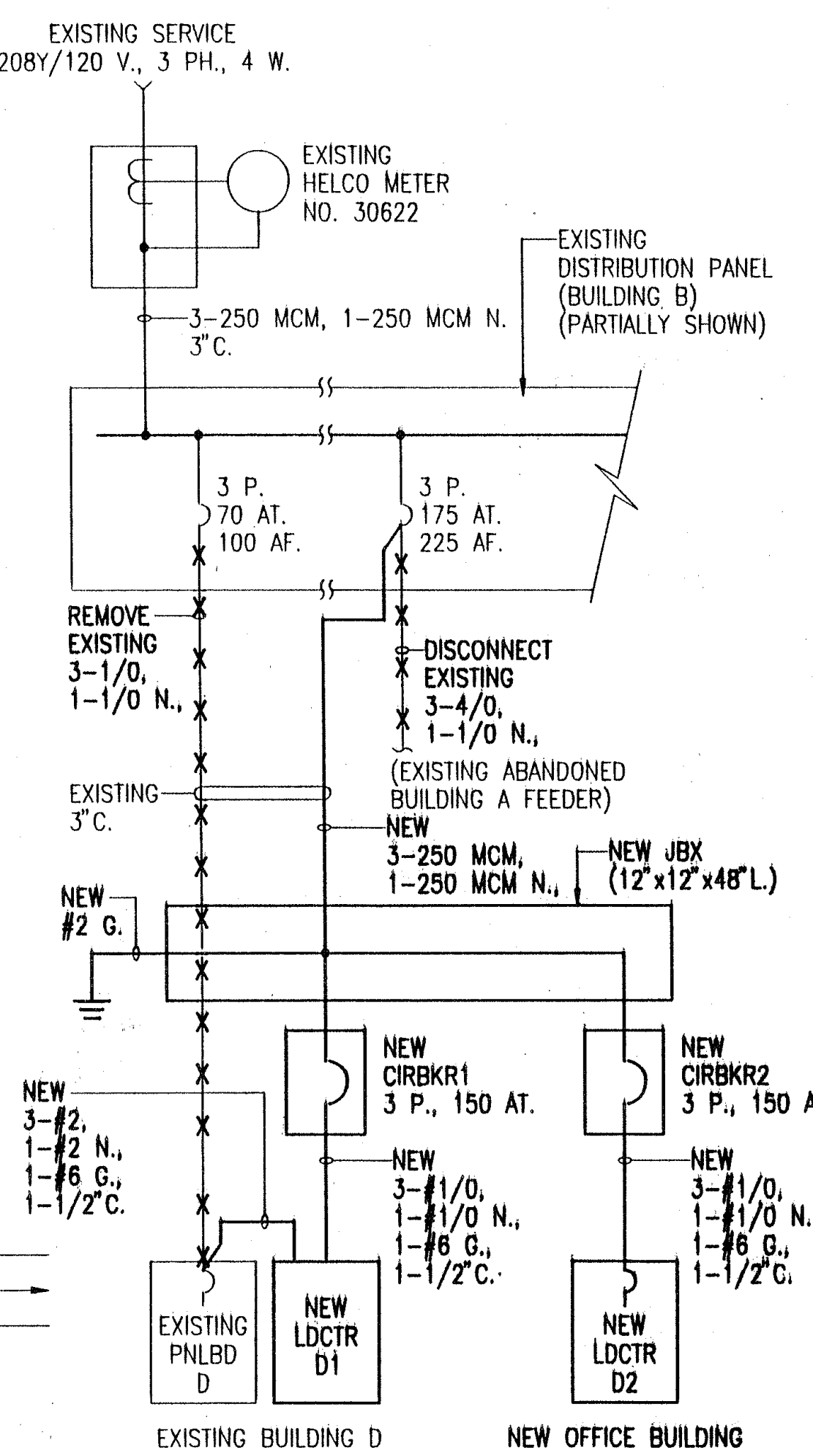


ELECTRICAL PLAN - SITE WORK
SCALE: APPROX. 1"=40'-0" TMK: 2-2-50:75

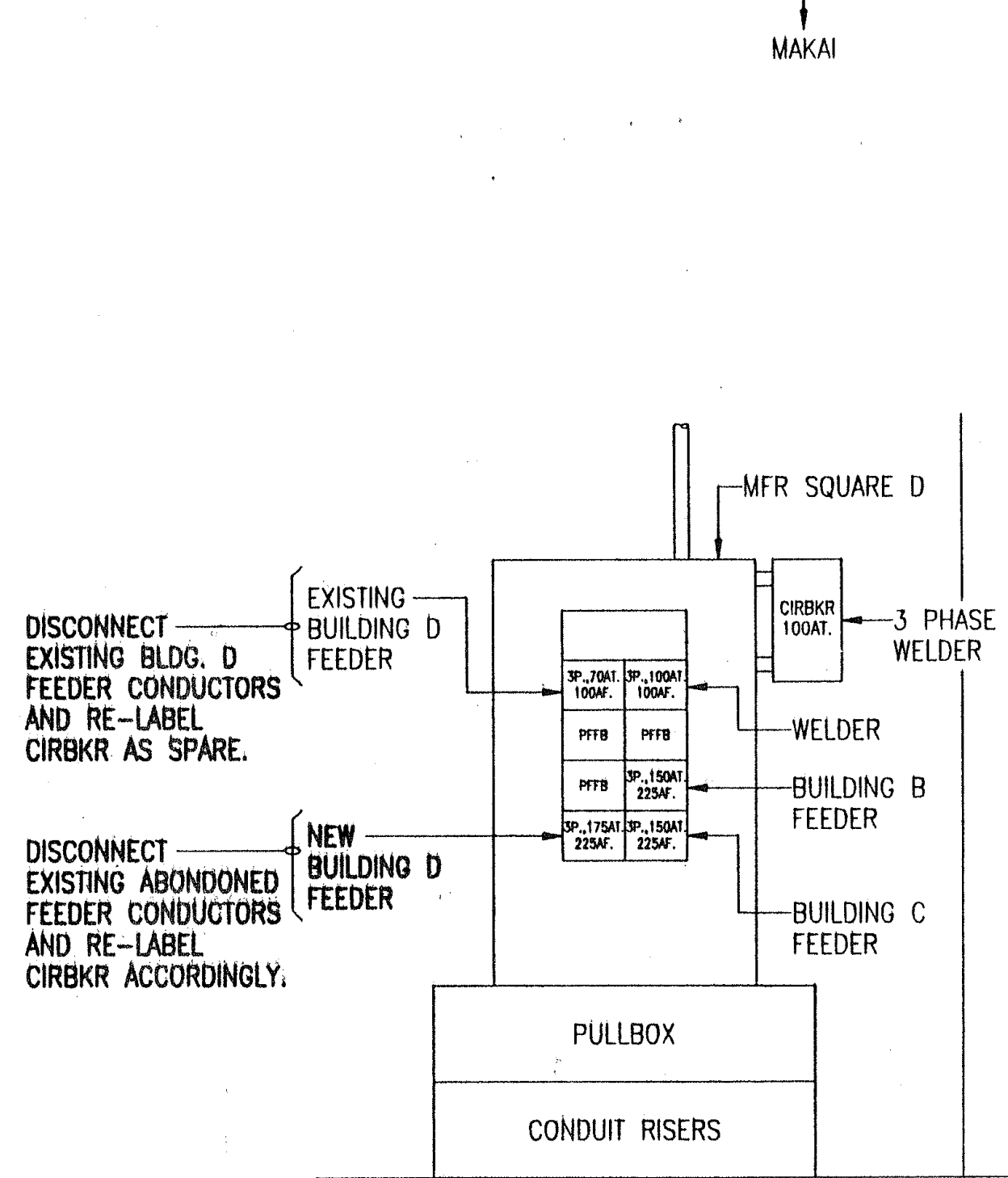


ONE-LINE DIAGRAM - ELECTRICAL

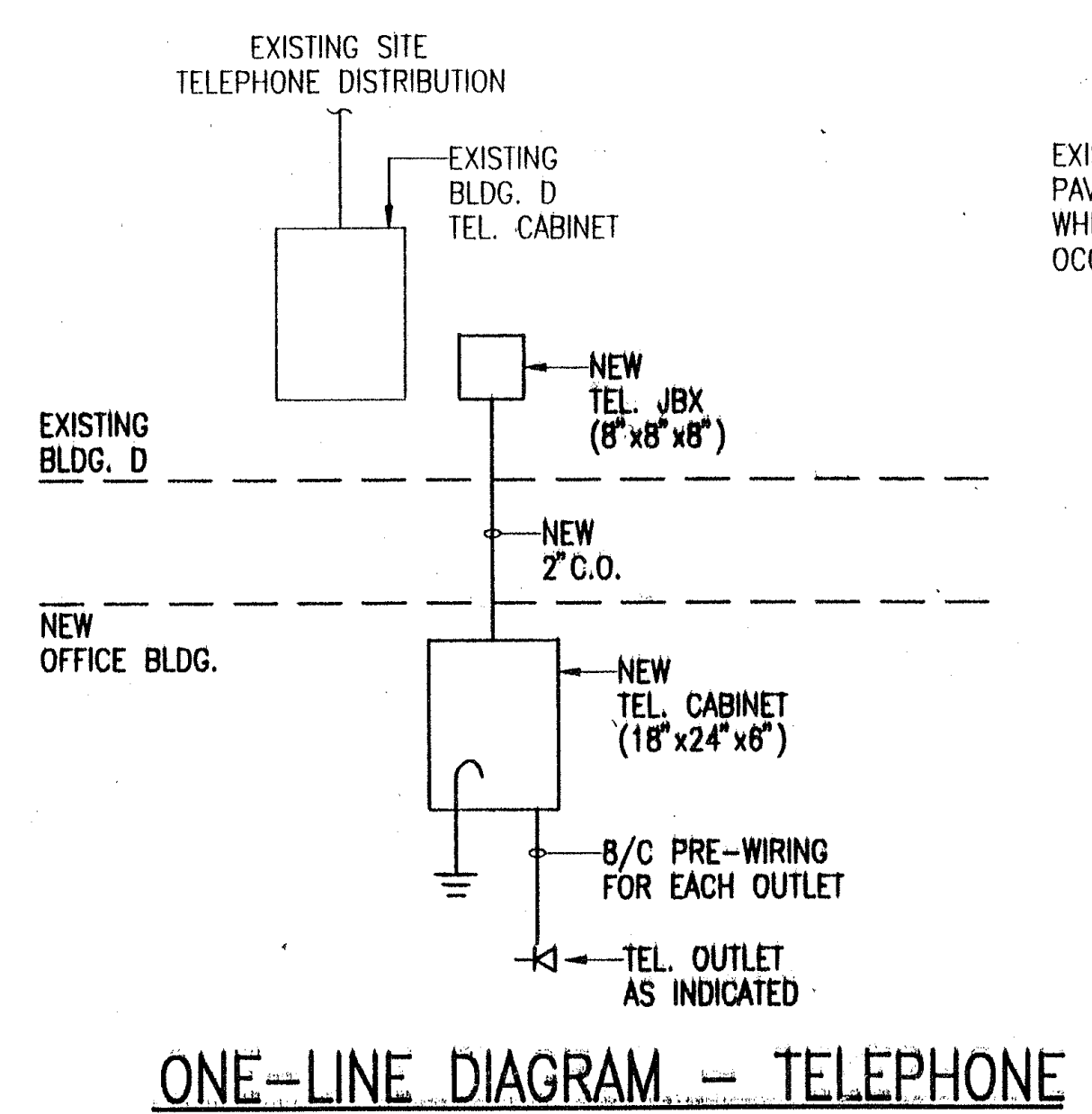
ABBREVIATIONS	
A	AMPERE
AC	AIR CONDITIONING OR ALTERNATING CURRENT
ACCU	AIR COOLED CONDENSING UNIT
AHU	AIR HANDLING UNIT
AIC	AMPERE INTERRUPTING CAPACITY
AT	AMPERE TRIP
BOF	BOTTOM OF FIXTURE
C	CONDUIT
CAB	CABINET
CIRBKR	CIRCUIT BREAKER
CO	CONDUIT ONLY
E,ELEC	ELECTRIC, ELECTRICAL
(E)	EXISTING
ES	ELECTRICAL SECONDARY
FSS	FUSED SAFETY SWITCH
G, GND	GROUND
HELCO	HAWAII ELECTRIC LIGHT COMPANY
H.T.CO.	HAWAIIAN TELEPHONE COMPANY
JBX	JUNCTION BOX
L	LIGHTS, LIGHTING, LONG, LENGTH
N	NEUTRAL
NFSS	NON-FUSED SAFETY SWITCH
NL	NIGHT LIGHTS
PBX	PULLBOX
PFB	PROVISIONS FOR FUTURE BREAKER
R	RECEPTACLE
TEL,T	TELEPHONE
(TYP)	TYPICAL
U/C	UNDER COUNTER
UG	UNDERGROUND
V	VOLTS, VERTICAL
W	WIRE(S), WIDE, WATTS

FED. ROAD DIST. NO.	STATE	FED. AID PROJ. NO.	FISCAL YEAR	SHEET NO.	TOTAL SHEETS
HAWAII	HAW.	HWY-H-02-92M	1992	9	11

ELECTRICAL PLAN SYMBOLS	
	DRAWING REVISION
	* - EQUIPMENT AS IDENTIFIED
	DISCONNECT SWITCH, FUSED OR NON-FUSED AS IDENTIFIED
	PANELBOARD OR LDCTR AS IDENTIFIED
	UNDERGROUND CONDUIT, CONCRETE ENCASED WHERE INDICATED. REFER DETAIL INDICATOR WHERE APPLICABLE
	HR A1 HOMERUN AND CIRCUITING INDICATOR. HASH LINES=QTY. OF CONDUCTORS, A-LDCTR, 1-CIR. NO.
	WIRING AND ELECTRICAL ITEMS AS IDENTIFIED TO BE DISCONNECTED/REMOVED/RELOCATED AS INDICATED
	DUPLEX RECEPTACLE OUTLET, 125 VOLT, SINGLE PHASE (3 = LDCTR CIRCUIT NUMBER)
	SPECIAL USE RECEPTACLE OUTLET, RATING AND USE AS INDICATED.
	LIGHTING SWITCH OUTLET [a = CONTROLLED LIGHTING FIXTURE(S)], S-SINGLE POLE, S2-DOUBLE POLE SINGLE THROW, S3-SINGLE POLE DOUBLE THROW, S4-DOUBLE POLE DOUBLE THROW
	LIGHTING FIXTURE/OUTLETS, TYPE IDENTIFIED IN LIGHTING SCHEDULE. (* = TYPE IDENT. NUMBER) (a = SWITCH IDENT., 3 = CIR. NO.)
	JUNCTION BOX OUTLET, 4" SQ., 2" DEEP OR AS REQUIRED
	TELEPHONE OUTLET
	EQUIPMENT OR OTHER ELECTRICAL CONNECTION AS INDICATED
	UTILITY POLE
	UTILITY POLE WITH SERVICE TRANSFORMER BANK

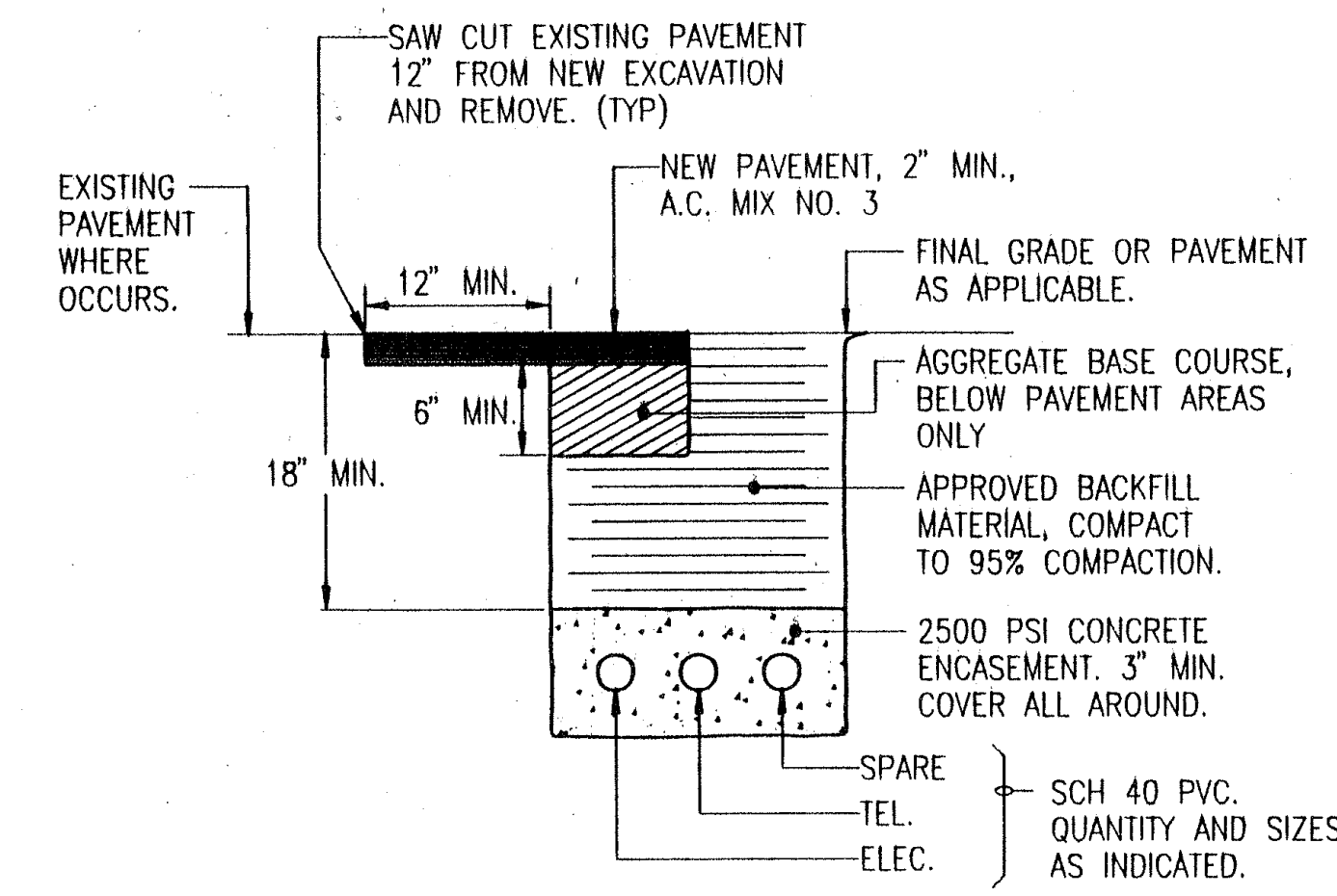


GENERAL ARRANGEMENT (TYP) - EXISTING DISTRIBUTION PANEL (BUILDING B)
NOT TO SCALE



ONE-LINE DIAGRAM - TELEPHONE

PROPRIETARY NOTE:
THESE PLANS SHALL NOT BE COPIED, REPRODUCED, OR USED IN ANY FORM OR MANNER WITHOUT THE WRITTEN AUTHORIZATION OF THE ENGINEER. ANY USE OF MATERIAL ON THE PLANS BY MINOR ALTERATIONS, RE-WORDING, OR REVISIONS TO OBTAIN ORIGINALLY INTENDED MEANINGS OR RESULTS SHALL BE PROHIBITED.



GENERAL ARRANGEMENT (TYP) - DUCTLINE DETAIL
NOT TO SCALE

- DEFINITIONS:**
- WIRING - ALL CONDUITS, RACEWAYS, CONDUCTORS, FITTINGS, PULLBOXES, JUNCTION BOXES, OUTLET BOXES, DEVICES, AND OTHER MATERIALS OR ITEMS AS NECESSARY FOR A COMPLETED AND OPERATIONAL ELECTRICAL CIRCUIT OR SYSTEM; OR THAT WHICH COMPRISES AN ELECTRICAL CIRCUIT OR SYSTEM.
- OUTLET - IN ADDITION TO DEFINITION IN THE NEC, OUTLET SHALL MEAN THE REQUIRED OUTLET BOXES, CONDUCTORS, TERMINATIONS, WIRING DEVICES, AND COVER PLATES, TO PROVIDE FOR THE INTENDED USE, APPLICATION, OR UTILIZATION EQUIPMENT.

- GENERAL NOTES:**
- ALL ELECTRICAL ITEMS INDICATED ON THE DRAWINGS ARE NEW AND SHALL BE PROVIDED BY THE CONTRACTOR UNLESS INDICATED AS "EXISTING", OR AS OTHERWISE NOTED.
 - ALL CONDUIT ROUTINGS AND EQUIPMENT LOCATIONS SHOWN ON THE DRAWINGS ARE APPROXIMATE. THE CONTRACTOR SHALL ROUTE, LOCATE CONDUITS, AND MOUNT EQUIPMENTS TO SUIT FIELD CONDITIONS.
 - CONTRACTOR SHALL INDICATE ALL FINAL LOCATIONS ON THE "AS-BUILT" DRAWINGS WHERE THEY DIFFER FROM THAT SHOWN ON THE DRAWINGS.
 - CONTRACTOR SHALL BE RESPONSIBLE FOR COORDINATING THE WORK AMONG THE VARIOUS TRADES AS NECESSARY TO AVOID CONFLICTS AND TO INSURE THE INSTALLATION OF ALL WORK WITHIN THE AVAILABLE SPACE.
 - CONTRACTOR SHALL CHECK AND MAINTAIN ORIGINAL PHASE ROTATION AND PHASE RELATIONSHIPS ON ALL CIRCUITS.
 - ALL ELECTRICAL EQUIPMENT SHALL BE NEW AND WARRANTED BY THE MANUFACTURER.
 - EXISTING CONDITIONS, MATERIALS, SIZES, LOCATIONS, AND DIMENSIONS SHOWN ON THESE DRAWINGS REPRESENT THE BEST AVAILABLE INFORMATION OBTAINED FROM FIELD INVESTIGATION. PRIOR TO ORDERING MATERIALS AND EQUIPMENT, THE CONTRACTOR SHALL VERIFY ALL EXISTING CONDITIONS, MATERIALS, SIZES, LOCATIONS, AND DIMENSIONS THAT AFFECT THE WORK OF THIS PROJECT. NOTIFY THE ENGINEER OF ALL QUESTIONS IN WRITING AND RESOLVE ALL CONTRACTOR'S QUESTIONS AND CONCERNS PRIOR TO PROCUREMENT AND BEFORE START OF CONSTRUCTION.
 - ALL ELECTRICAL INSTALLATION SHALL BE IN ACCORDANCE WITH THE NATIONAL ELECTRICAL CODE, NATIONAL ELECTRICAL SAFETY CODE, AND FEDERAL, STATE, AND COUNTY GOVERNMENT STANDARDS, REGULATIONS, AND ORDINANCES.
 - SITE PLAN INDICATES APPROXIMATE LOCATIONS OF KNOWN BURIED ITEMS. CONTRACTOR SHALL NOT CAUSE ANY HARM TO OR DAMAGE ANY EXISTING BURIED ITEM. CONTRACTOR SHALL PROVIDE ALL NECESSARY MEANS TO LOCATE ALL EXISTING BURIED ITEMS INTERFERING WITH NEW WORK. CONTRACTOR SHALL REPAIR OR REPLACE ANY DAMAGED BURIED ITEM TO THE SATISFACTION AND ACCEPTANCE OF THE ENGINEER.
 - ALL EXPOSED CONDUITS AND FITTINGS, AND METAL PORTIONS OF EQUIPMENT ENCLOSURE SHALL BE FIELD PAINTED FOR CORROSION PROTECTION.
 - ALL EQUIPMENT SHALL BE PROPERLY MOUNTED, ANCHORED, AND SUPPORTED BY APPROVED METHODS FOR SEISMIC RESTRAINT.



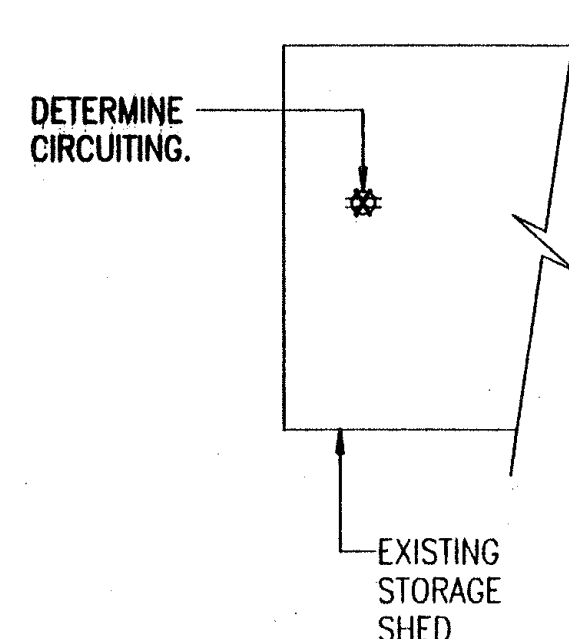
THIS WORK WAS PREPARED BY ME OR UNDER MY SUPERVISION AND CONSTRUCTION OF THIS PROJECT WILL BE UNDER MY SUPERVISION
4/14/92

STATE OF HAWAII
DEPARTMENT OF TRANSPORTATION
HIGHWAYS DIVISION

ELECTRICAL SITE PLAN & DETAILS

HILO BASECAMP BUILDING 'D'
OFFICE RENOVATION
PROJ. NO. HWY-H-02-92M
SCALE: AS NOTED DATE: APRIL 1992

SHEET NO. 1 OF 3 SHEETS



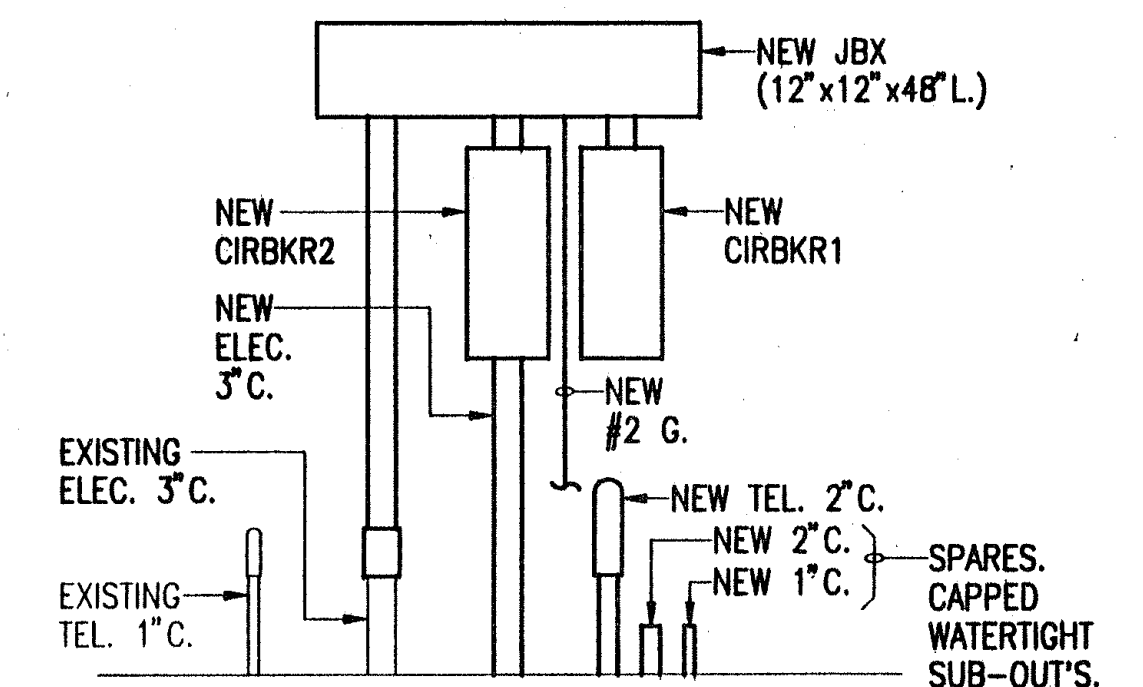
EXISTING PNLBD D		208Y/120 V., 3 PH., 4 W., 100 A. 100 A. MAIN BREAKER SQUARE D CAT. NO. NQOB 20-4AB									
WIRE SIZE	SERVICE	CIR. AMP	BKR. POLE	CIR. NO.	WIRE SIZE	CIR. NO.	CIR. POLE	BKR. AMP	SERVICE	WIRE SIZE	
3	RECEP - FOYER	20	1	1	A	2	1	20	???		
	SPARE	20	2	3	B	4	1	20	???		
				5	C	6	1	20	PAINT MIXER		
	LTS/RECEP - PAINT STORAGE	20	1	7	A	8	1	20	FLOOD LIGHT		
	LIGHTS - PAINT STORAGE	20	1	9	B	10	1	20	LIGHTS - TOILET/JAN./STO.		
	LIGHTS - BRIDGE STORAGE	20	1	11	C	12	1	20	LIGHTS - CLASSROOM	#1	
	LIGHTS - POISON STORAGE	20	1	13	A	14	1	20	LIGHTS - CLASSROOM	#1	
	LIGHTS - MAINT. STORAGE	20	1	15	B	16	1	20	LIGHTS - OFFICE	#1	
4	LIGHTS - MAINT. STORAGE	20	1	17	C	18	1	20	RECEP - FOYER (D.F.)		
	#12 LIGHTS - MEZZANINE	20	1	19	A	20	1	20	RECEP - SODA MACHINE		
	LIGHTS - EXTERIOR (TC)	20	1	21	B	22	1	20	LIGHTS - FOYER	#1	
	ICE MACHINE	20	1	23	C	24	1	20	WATER HEATER		

- * = NOT IDENTIFIED ON DIRECTORY.
- 1. CONTRACTOR SHALL PROVIDE THE REQUIRED MAN-HOURS TO FIELD IDENTIFY AND VERIFY EACH BRANCH CIRCUIT.
- 2. PROVIDE NEW TYPEWRITTEN PNLBDD DIRECTORY IN ACCORDANCE WITH FIELD IDENTIFICATION AND NEW WORK.
- 3. REMOVE EXISTING BRANCH CIRCUIT. RE-LABEL DIRECTORY AS "SPARE".
- 4. REMOVE EXISTING BRANCH CIRCUIT. RE-USE FOR NEW BRANCH CIRCUIT AND RE-LABEL DIRECTORY AS INDICATED.
- 5. NEW BRANCH CIRCUIT. PROVIDE NEW BRANCH CIRCUIT BREAKER IN EXISTING PFFB.

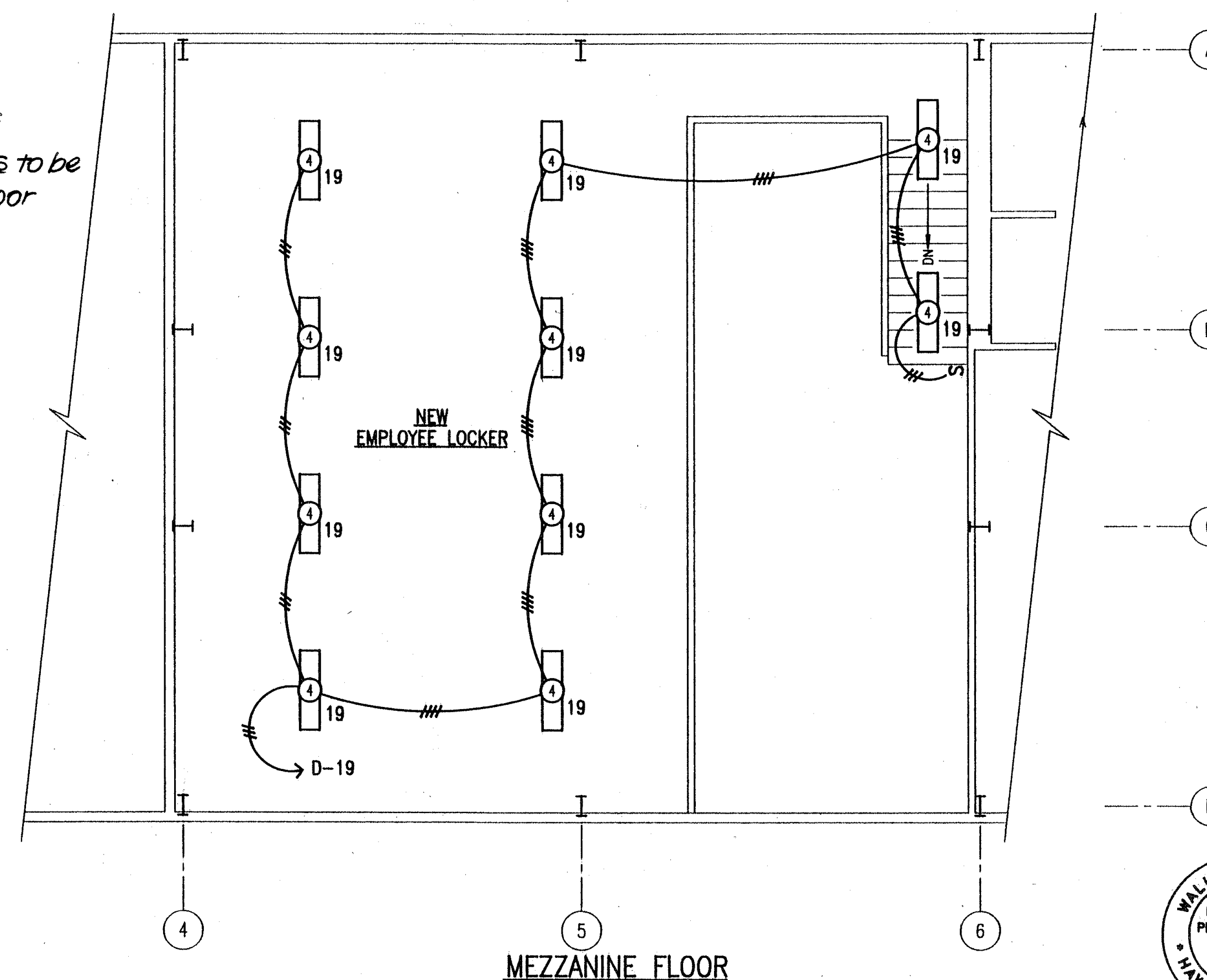
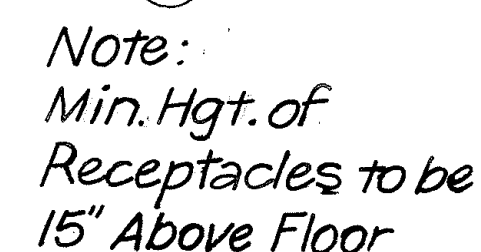
FED. ROAD DIST. NO.	STATE	FED. AID PROJ. NO.	FISCAL YEAR	SHEET NO.	TOTAL SHEETS
HAWAII	HAW.	HWY-H-02-92M	1992	10	11

DEMOLITION NOTES:

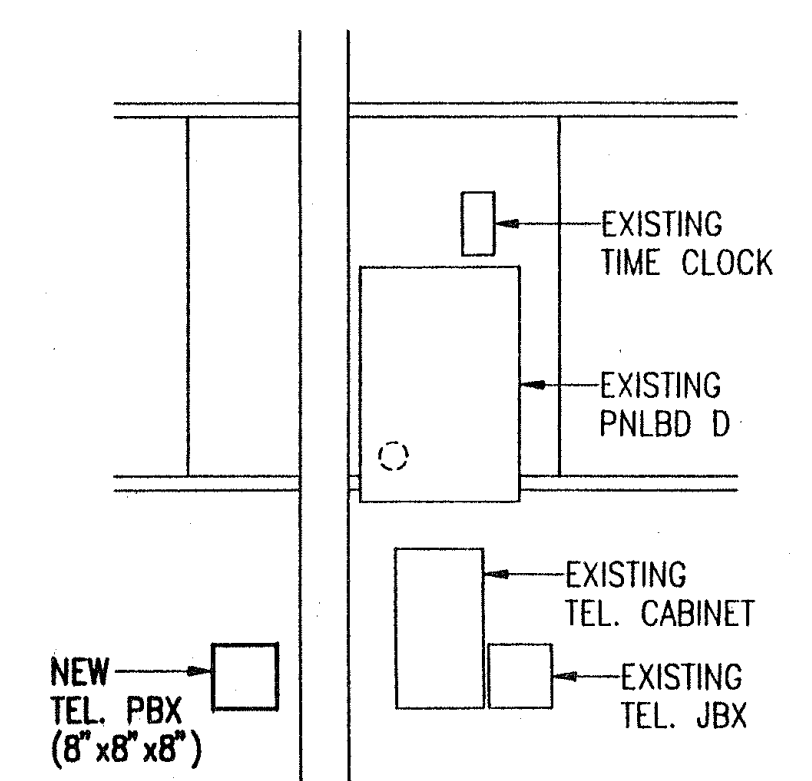
1. THE CONTRACTOR SHALL COORDINATE ALL WORK WITH THE ENGINEER IN THE FIELD DURING THE ACTUAL DEMOLITION WORK TO RESOLVE ALL QUESTIONS WHERE APPLICABLE.
2. DISCONNECT AND REMOVE THE EXISTING ELECTRICAL ITEMS AND THEIR ASSOCIATED WIRING AS INDICATED.
3. ALL UN-USED EXISTING WIRING SHALL BE REMOVED IN ITS ENTIRETY.
4. ALL CONDUITS EMBEDDED IN WALLS TO REMAIN SHALL HAVE ALL WIRING REMOVED AND THE CONDUITS CAPPED AND/OR SEALED PRIOR TO THE WALLS BEING COVERED WITH NEW WORK.
5. DEVICE AND LIGHTING FIXTURE OUTLET BOXES NOT RE-USED FOR NEW WIRING SHALL BE COVERED WITH BLANK PLATES OR BOXES REMOVED AND OUTLET HOLE REPAIRED ARCHITECTURALLY.
6. THE CONTRACTOR SHALL COORDINATE/VERIFY ALL EXISTING BRANCH CIRCUITS AS APPLICABLE TO THE DEMOLITION WORK AND AS NECESSARY TO PROVIDE TEMPORARY POWER DURING THE VARIOUS PHASES OF CONSTRUCTION.
7. ALL EMBEDDED CONDUITS SHALL HAVE ALL WIRING REMOVED AND CONDUITS REMOVED OR ABANDONED AS APPLICABLE. ALL ABANDONED CONDUITS SHALL BE CAPPED AND/OR SEALED BY APPROVED METHODS.
8. IT SHALL BE THE CONTRACTOR'S RESPONSIBILITY TO VERIFY ALL EXISTING CONDITIONS. THE EXISTING CONDITIONS SHOWN ARE INTENDED TO BE AS COMPLETE AND ACCURATE AS POSSIBLE. HOWEVER, ALL ITEMS NOT SHOWN SHALL BE DEMOLISHED WHERE REQUIRED AT NO ADDITIONAL COST TO THE OWNER.



GENERAL ARRANGEMENT - BLDG. D -
NEW SERVICE DISCONNECT CIRBKR'S
NOT TO SCALE



GENERAL ARRANGEMENT -
BLDG. D - EXISTING PNLBD D
NOT TO SCALE



STATE OF MAHARASHTRA
DEPARTMENT OF TRANSPORTATION
HIGHWAYS DIVISION

BUILDING 'D'
ELECTRICAL PLANS & DETAILS

HILD BASEYARD, BUILDING 'D'
OFFICE RENOVATION
PROJ. NO. HNT-H-08-92M

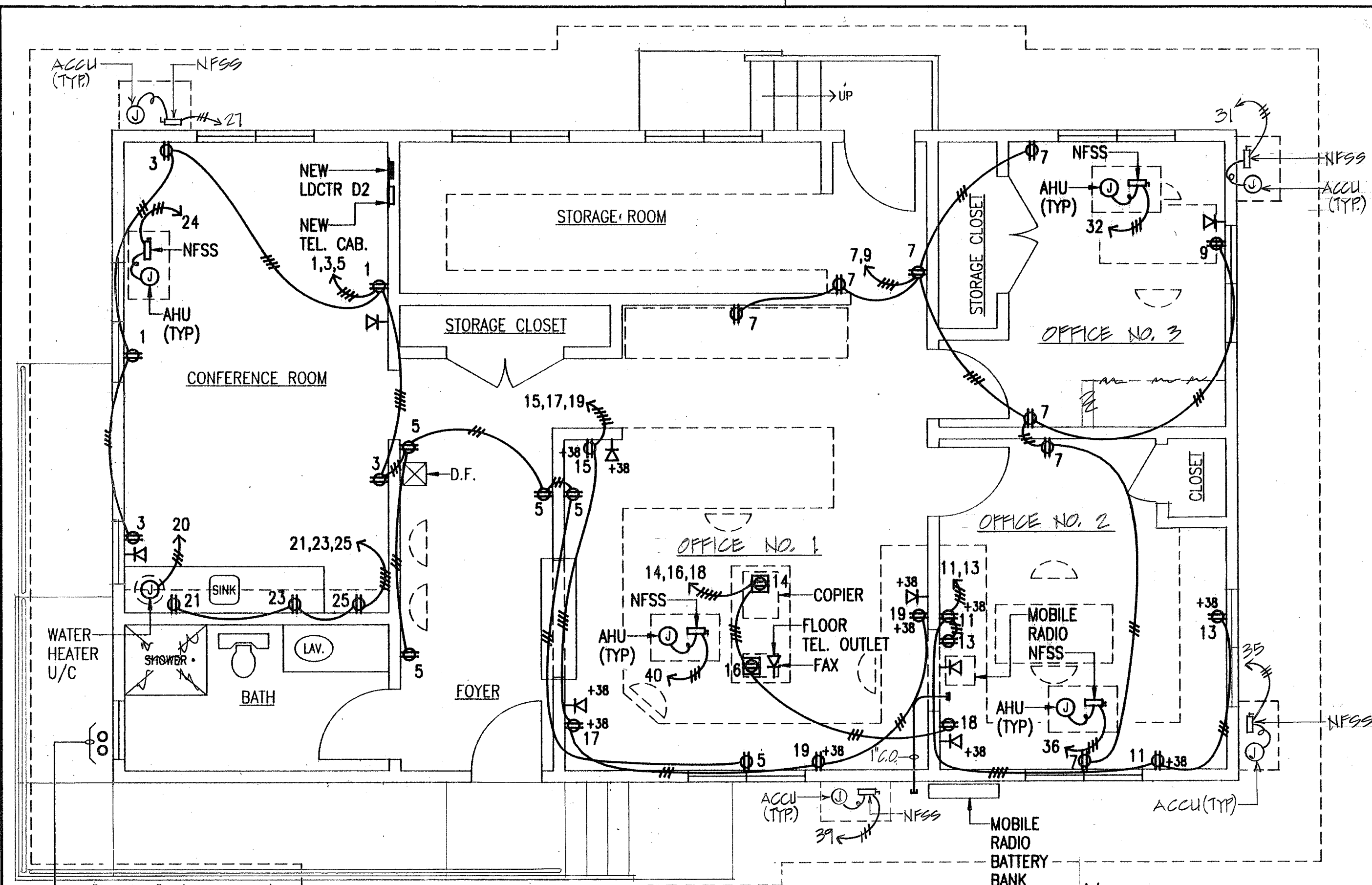
SCALE: AS NOTED DATE: APRIL 1992

SHEET NO. 2 OF 3 SHEETS

"AS-BUILT"

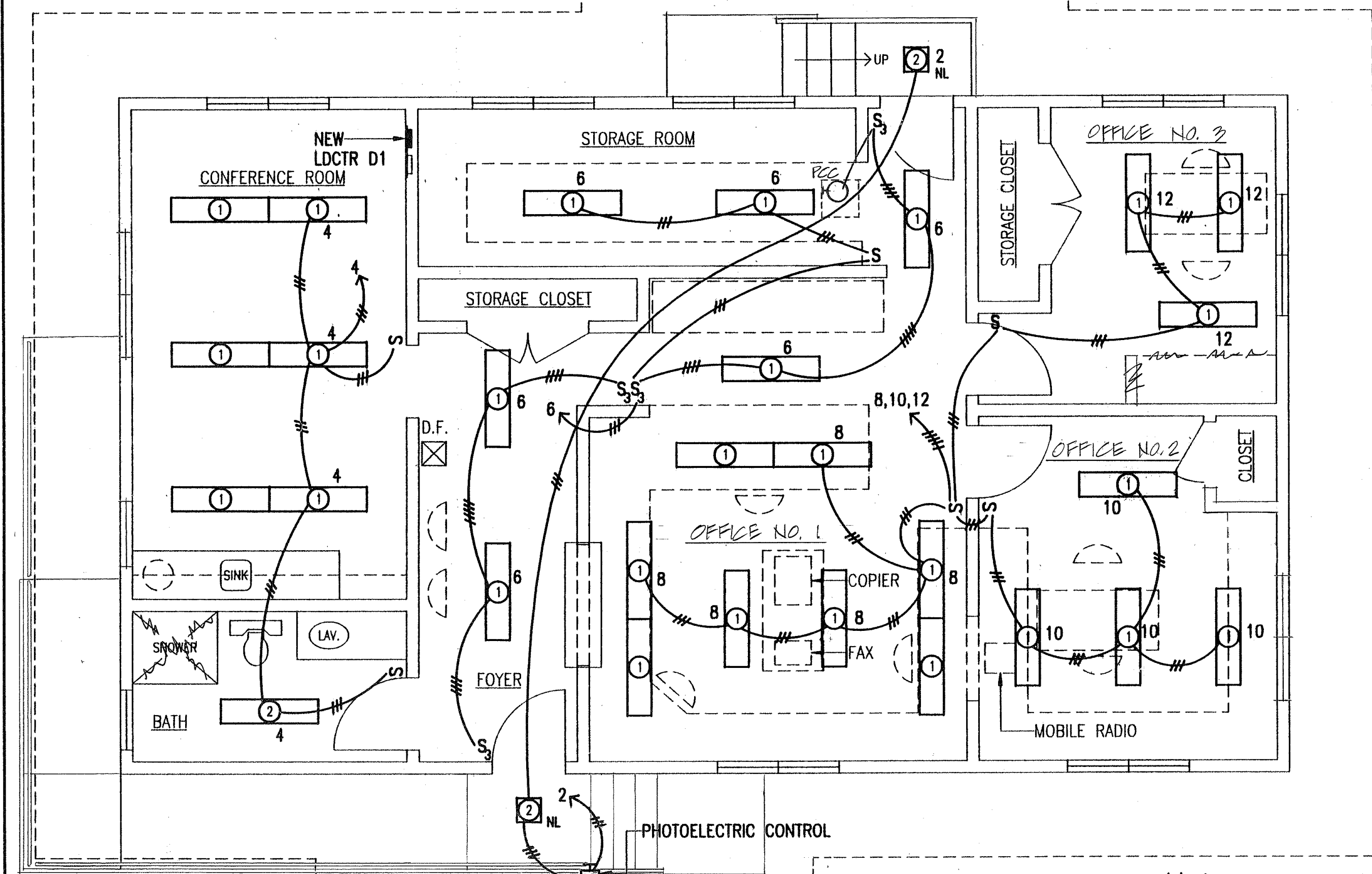
10

2K1 FN: 39263



ELECTRICAL PLAN - NEW OFFICE BUILDING - POWER
 1-1" C., 1-2" C. (UNDER BLDG)
 SPARE SUB-OUTS FROM EXISTING BLDG. "D".
 PROVIDE WATERTIGHT CAPS. SCALE: 1/4"=1'-0"

Note:
 Min Hgt. of Receptacles to be
 15" Above Floor



ELECTRICAL PLAN - NEW OFFICE BUILDING - LIGHTING
 SCALE: 1/4"=1'-0"

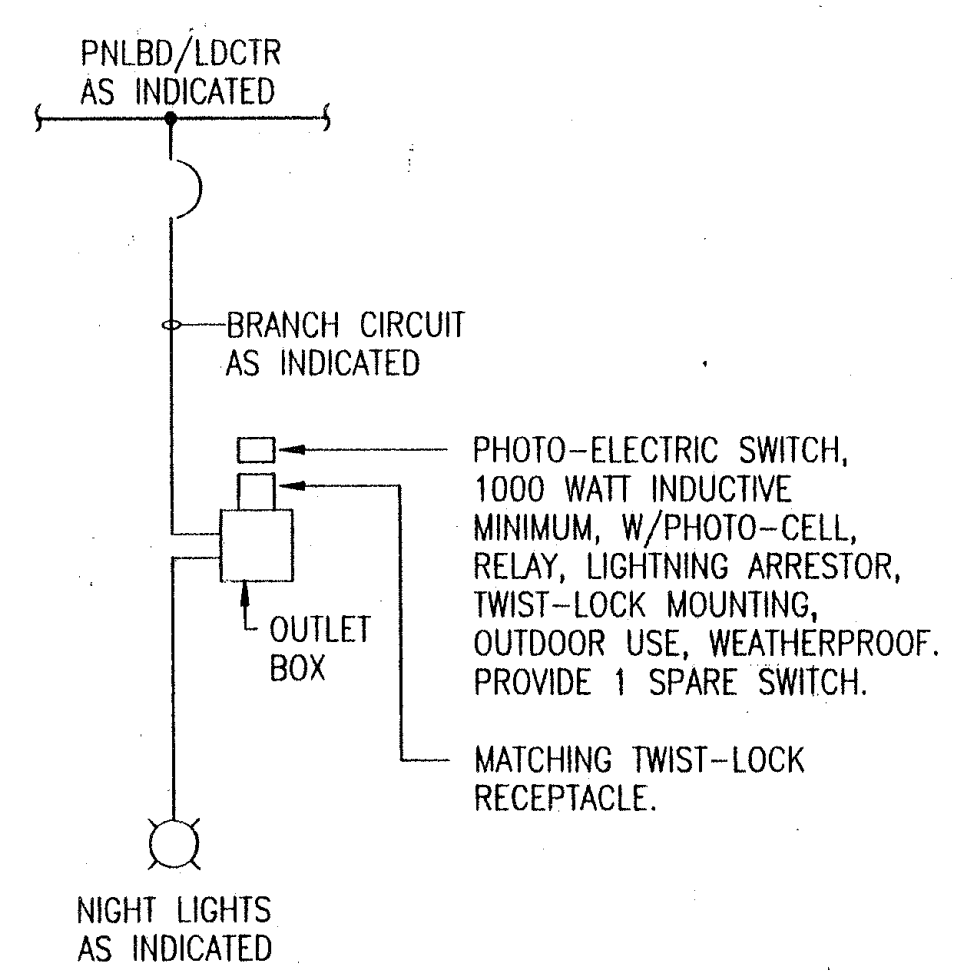
Note:
 Refer to Floor Plan Sht. No. 4
 for Revised Layout

ELECTRICAL PLAN NOTES:

1. ELECTRICAL PLAN IS DIAGRAMMATIC AND SHOWS CIRCUITING REQUIREMENTS ONLY. (EXCEPT AS MAY BE INDICATED.)
2. WHERE PERMITTED TYPE NM WIRING SHALL BE CONCEALED IN CEILING, WALL, AND CABINET SPACES. IF EXPOSED, COVER WITH REDWOOD WIRE MOLDING.
3. ALL PANELBOARDS/LDCTRS SHALL BE CIRCUITED AS INDICATED ON THE DRAWINGS. DO NOT CHANGE WITHOUT THE APPROVAL OF THE ENGINEER.
4. ALL PANELBOARDS/LDCTRS SHALL HAVE TYPEWRITTEN DIRECTORIES AND IN THE FORMAT AS INDICATED ON THE SCHEDULES, I.E., SAME PHYSICAL ARRANGEMENT AS PANELBOARD.
5. ALL 120 VOLT BRANCH CIRCUITS LESS THAN 100 FEET MAY USE #12 CONDUCTORS. ALL CIRCUITS LONGER THAN 100 FEET SHALL USE #10 CONDUCTORS FOR THE FIRST 100 FEET. NO. 12 CONDUCTORS MAY BE USED FOR THE LAST 25 TO 50 FEET OF ANY CIRCUIT LONGER THAN 150 FEET.
6. PROVIDE A NEUTRAL CONDUCTOR FOR EACH SET OF PHASE CONDUCTORS. CONTRACTOR SHALL PLAN TO LIMIT HOMERUNS TO 2 SETS OF PHASE CONDUCTORS AND 2 NEUTRALS WHEREVER PRACTICAL.
7. PROVIDE A GROUNDING CONDUCTOR FOR ALL CIRCUITS. DO NOT USE CONDUIT OR RACEWAY FOR CIRCUIT GROUNDING. WHERE INDICATED OR REQUIRED, A DEDICATED AND/OR ISOLATED GROUND CONDUCTOR/SYSTEM SHALL BE PROVIDED.
8. PLANS MAY NOT ALWAYS INDICATE QUANTITY OF CONDUCTORS BY HASH MARKS. PROVIDE CONDUCTORS BASED ON CIRCUITING REQUIREMENTS AND GUIDELINES STATED ABOVE.
9. ALL REQUIREMENTS FOR MECHANICAL EQUIPMENT AND AIR CONDITIONING SYSTEMS SHALL BE VERIFIED AND COORDINATED BY THE CONTRACTOR FOR DETAILS OF INSTALLATION AND WIRING CONNECTIONS.
10. DRAWINGS ARE INTENDED TO BE COMPLETE AS TO GENERAL INTENT AND REQUIREMENTS BUT NOT TO ACTUAL DETAILS OF CONSTRUCTION, INSTALLATION, AND LOCATIONS.

MOUNTING HEIGHTS:
 (UNLESS OTHERWISE INDICATED)

1. RECEPTACLES OUTLET:
 +18 INCHES ABOVE FINISH FLOOR, CENTERLINE, VERTICAL, GROUND UP
 +8 INCHES ABOVE COUNTER TOPS, BASINS, ETC., CENTERLINE, VERTICAL, GROUND UP
2. SWITCH OUTLET:
 +48 INCHES ABOVE FINISH FLOOR, CENTERLINE, VERTICAL
3. DISCONNECT MEANS:
 6'-6" MAX ABOVE FINISH FLOOR OR FINISH GRADE TO OPERATING HANDLE
4. LOADCENTER, CABINETS:
 +5'-6" ABOVE FINISH FLOOR OR FINISH GRADE TO TOP



ONE-LINE DIAGRAM - NIGHT LIGHT CONTROL

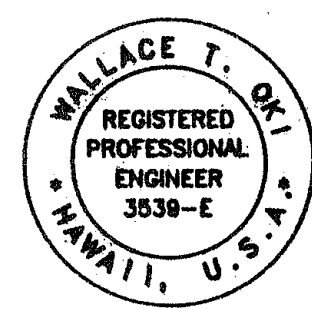
NEW LDCTR D2											
208Y/120 VOLTS, 3 PHASE, 4 WIRE, NEUTRAL BUS, GROUND BUS, FLUSH MOUNTING, 200 A. MAIN BUS, 100 A. MAIN BREAKER, PLUG-IN BRANCH BREAKERS, FULL SIZE BREAKER ONLY, 10,000 AIC, TYPEWRITTEN DIRECTORY											
WIRE SIZE	SERVICE	CIR. AMP	BKR. POLE	CIR. NO.	CIR. NO.	CIR. AMP	BKR. POLE	CIR. NO.	SERVICE	WIRE SIZE	
#12	RECEPS - CONFERENCE ROOM	20	1	1	A	2	1	20	NIGHT LIGHT	#12	
#12	RECEPS - CONFERENCE ROOM	20	1	3	B	4	1	20	LIGHTS - CONF. RM/BATH	#12	
#12	RECEPS - FOYER/MAINT. OFF.	20	1	5	C	6	1	20	LIGHTS - FOYER/STORAGE RM	#12	
#12	RECEPS - STORAGE/OFFICES	20	1	7	A	8	1	20	LIGHTS - MAINTENANCE OFFICE	#12	
#12	RECEPS - BMS II OFFICE	20	1	9	B	10	1	20	LIGHTS - HC/MS IV OFFICE	#12	
#12	RECEPS - HC/MS IV OFFICE	20	1	11	C	12	1	20	LIGHTS - BMS II OFFICE	#12	
#12	RECEPS - HC/MS IV OFFICE	20	1	13	A	14	1	20	COPIER	#12	
#12	RECEPS - MAINTENANCE OFF.	20	1	15	B	16	1	20	FAX	#12	
#12	RECEPS - MAINTENANCE OFF.	20	1	17	C	18	1	20	MOBILE RADIO	#12	
#12	RECEPS - MAINTENANCE OFF.	20	1	19	A	20	2	30	WATER HEATER	#10	
#12	RECEP - CONF. RM (MESS)	20	1	21	B	22	-	-			
#12	RECEP - CONF. RM (MESS)	20	1	23	C	24	2	20	AHU - CONF. RM (MAUKA)	#12	
#12	RECEP - CONF. RM (REFRIG.)	20	1	25	A	26	-	-			
#10	ACCU - CONFERENCE ROOM	30	2	27	B	28	-	-			
				29	C	30	-	-			
#10	ACCU - BMS II OFFICE	30	2	31	A	32	2	20	AHU - BMS II OFFICE	#12	
				33	B	34	-	-			
#10	ACCU - HC/MS IV OFFICE	30	2	35	C	36	2	20	AHU - HC/MS IV OFFICE	#12	
				37	A	38	-	-			
#10	ACCU - MAINTENANCE OFFICE	30	2	39	B	40	2	20	AHU - MAINTENANCE OFFICE	#12	
				41	C	42	-	-			

FED. ROAD DIST. NO.	STATE	PROJ. NO.	FISCAL YEAR	SHEET NO.	TOTAL SHEETS
HAWAII	HAW.	HWY-H-02-92M	1992	11	11

LIGHTING FIXTURE SCHEDULE

NO.	FIXTURE	TYPE	EXISTING
(A)	CEILING SUSPENDED	INCAND.	EXISTING
(B)	CEILING SURFACE	INCAND.	EXISTING
(C)	WALL SURFACE	INCAND.	EXISTING
(D)	CEILING SURFACE	FLUOR.	EXISTING
(E)	WALL SURFACE	HID	EXISTING FLOODLIGHT
(F)	EAVES SURFACE	INCAND.	EXISTING
(1)	CEILING SURFACE	2-F40CW RS (ENERGY EFFICIENT)	1'X4' NOMINAL, SURFACE, WRAPAROUND, DIEFORMED AND EMBOSSED STEEL HOUSING, BAKED WHITE ENAMEL FINISH, ONE PIECE 18 GA. COMBINATION END PLATE WITH SOCKETS, CLEAR PRISMATIC ACRYLIC DIFFUSER, SNAP-ON TYPE, (ENERGY EFFICIENT BALLAST)
(2)	CEILING SURFACE	2-26W FLUOR. (QUAD TUBE)	12" SQ. X 5-1/2" HIGH FLUORESCENT OUTDOOR LIGHTING, VANDAL RESISTANT, HEAVY GAUGE STEEL BACKPLATE, LEXAN POLYCARBONATE PRISMATIC DIFFUSER, TAMPERPROOF SCREWS, U.L. LISTED FOR WET LOCATIONS.
(3)	CEILING SURFACE	4-F40CW RS ENERGY EFFICIENT	1'-4"X4' NOMINAL, SURFACE, WRAPAROUND, DIEFORMED AND EMBOSSED STEEL HOUSING, BAKED WHITE ENAMEL FINISH, ONE PIECE 18 GA. COMBINATION END PLATE WITH SOCKETS, CLEAR PRISMATIC ACRYLIC DIFFUSER, SNAP-ON TYPE, ENERGY EFFICIENT BALLAST.
(4)	CEILING SUSPENDED	2-F40CW RS ENERGY EFFICIENT	GENERAL PURPOSE INDUSTRIAL FLUORESCENT, BAKED ENAMEL, SOLID REFLECTOR, ONE PIECE EXTRA WIDE, ALL WHITE METAL FRAME, ENERGY EFFICIENT BALLAST.

CALCS. FOR ORD. 8476			
AREA, SQ. FT.	WATTS ALLOWED/SQ. FT.	TOTAL WATTS ALLOWED	CONNECTED WATTS
INTERIOR			
CONFERENCE ROOM, 252 SQ. FT.	3 W/SQ.FT.	756	516
MAINTENANCE OFFICE, 240 SQ. FT.	3 W/SQ.FT.	720	688
BMS II OFFICE, 169 SQ. FT.	3 W/SQ.FT.	507	258
HC/MS IV OFFICE, 195 SQ. FT.	3 W/SQ.FT.	585	344
BATHROOM, 84 SQ. FT.	1 W/SQ.FT.	84	86
STORAGE ROOM, 161 SQ. FT.	1 W/SQ.FT.	161	172
FOYER, 126 SQ. FT.	1 W/SQ.FT.	126	344
TOTALS		2939	2408
EXTERIOR			
PERMETER, 152 LF	5 W/LF	760	104
TOTALS		760	104



STATE OF HAWAII
 DEPARTMENT OF TRANSPORTATION
 HIGHWAYS DIVISION

NEW OFFICE BUILDING
ELECTRICAL PLANS & DETAILS

HILLO BASEYARD, BUILDING "D"
 OFFICE RENOVATION
 PROJ. NO. HWY-H-02-92M
 SCALE: AS NOTED DATE: APRIL 1992

SHEET NO. 3 OF 3 SHEETS

"AS-BUILT"