

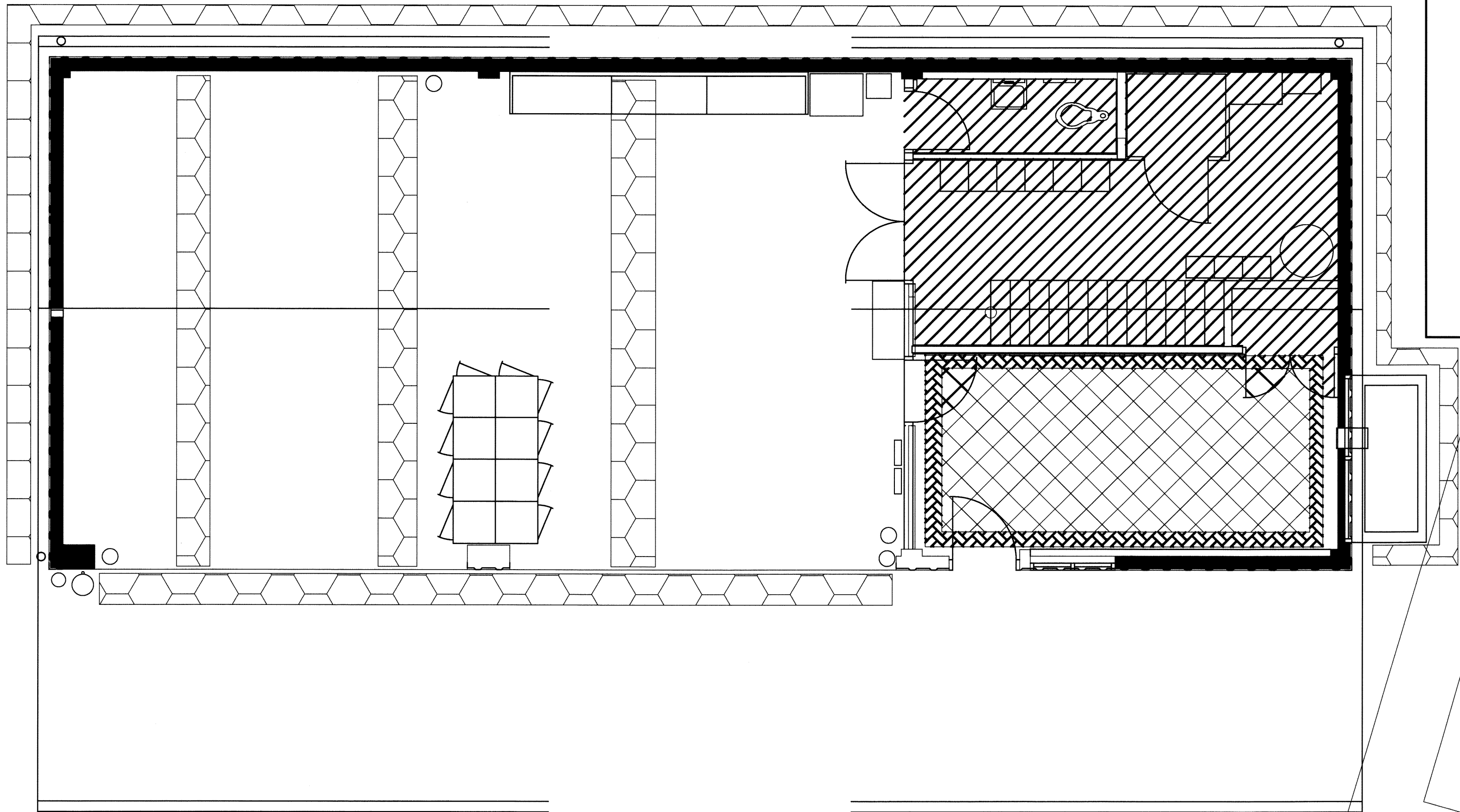
FED. ROAD DIST. NO.	STATE	FED. AID PROJ. NO.	FISCAL YEAR	SHEET NO.	TOTAL SHEETS
HAWAII	HAWAII	HWY-H-05-06	2008	17	64

Asbestos Materials

- Joint Compound
- Textured Acoustical Ceiling

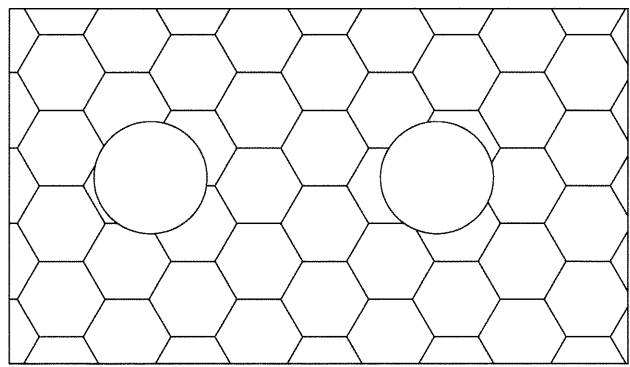
Lead Painted Components

- Yellow Metal Trusses
- Flashing On Roof, Metal Beams In Garage Frame Of Entrance, Roof And Poles Of Fuel Station
- Exterior And Interior Walls
- Walls Of Office



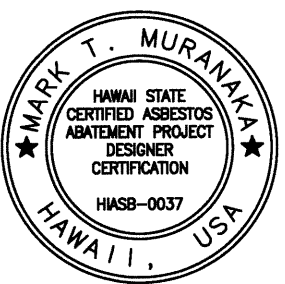
Notes

- Contractor Shall Coordinate All Work Pertaining To The Disturbance Of Hazardous Materials Identified On This Drawing With Other Trades.
- Remove Loose And Flaky Paint From Building Components That Are Scheduled For Demolition Prior To Demolishing. See Architectural Drawings For Areas To Be Demolished. Remove All Paint From All Other Building Components That Shall Remain In Place.
- Joint Compound On The Office Drywall Contains Asbestos. Remove Drywall In Accordance With Section 13281. If The Drywall Is Determined To Be Nonhazardous Waste, Dispose Drywall In Accordance With Section 13281. If The Drywall Is Determined To Be Hazardous Waste, Dispose Drywall In Accordance With Section 13282.
- Textured Acoustical Ceiling Plaster Contains Asbestos. Remove And Dispose In Accordance With Section 13281.
- Assume All Painted Surfaces Are Lead-Containing.



Fuel Station

ORIGINAL PLAN	SURVEY PLATTED BY	DATE
NOTE BOOK	DRAWN BY	5/02
No.	TRACED BY	5/02
	QUANTITIES BY	5/02
	CHECKED BY	5/02



THIS WORK WAS PREPARED BY ME
OR UNDER MY SUPERVISION AND
CONSTRUCTION OF THIS PROJECT
WILL BE UNDER MY OBSERVATION.
Mark T. Muramaka
MURAMAKA ENVIRONMENTAL CONSULTANTS, INC.

STATE OF HAWAII
DEPARTMENT OF TRANSPORTATION
HIGHWAYS DIVISION

HAZARDOUS MATERIALS PLAN

HONOKAA BASEYARD IMPROVEMENTS
Project No. HWY-H-05-06

Scale: As Noted Date: MAY 2008

SHEET No. 6-1 OF 6-1 SHEETS