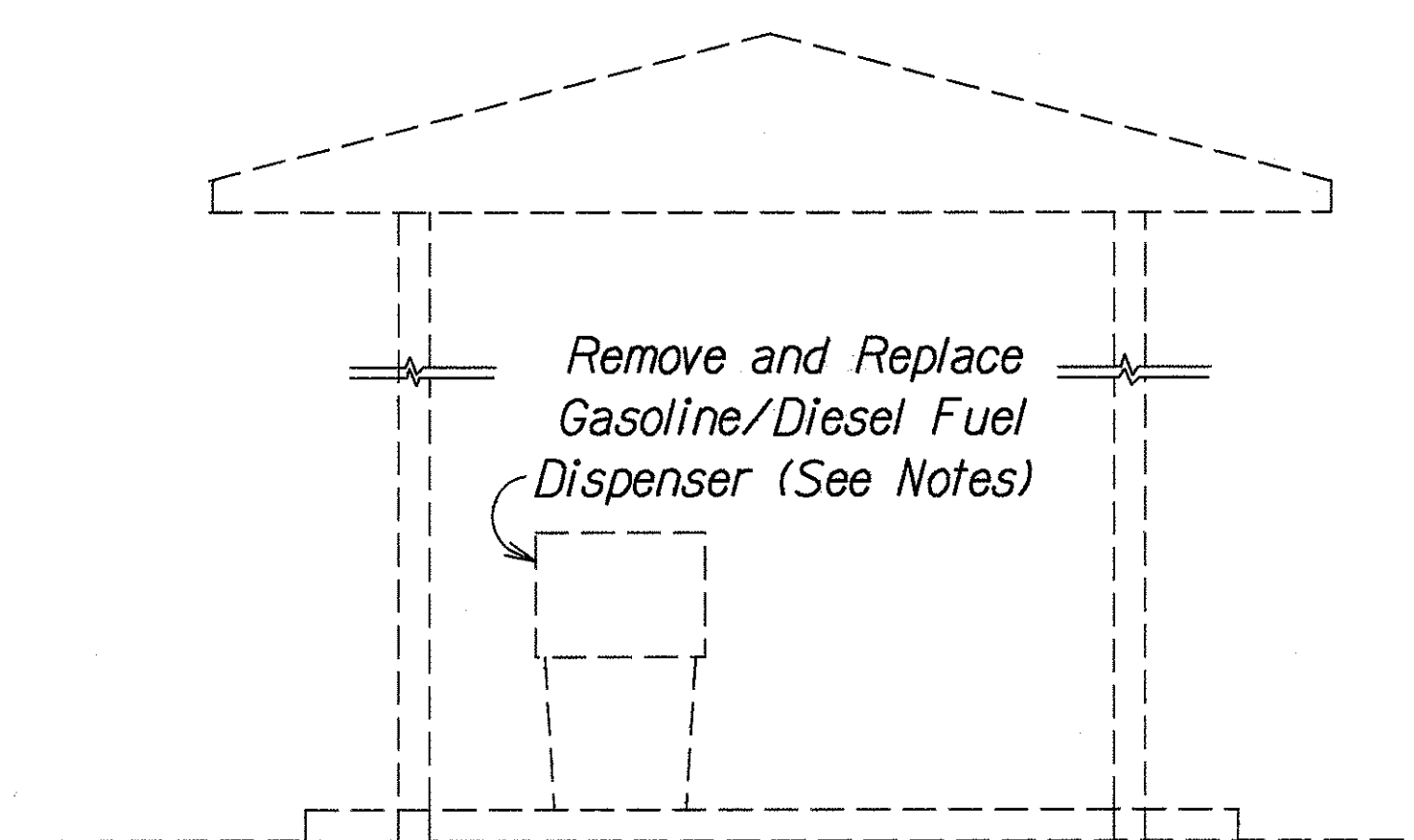
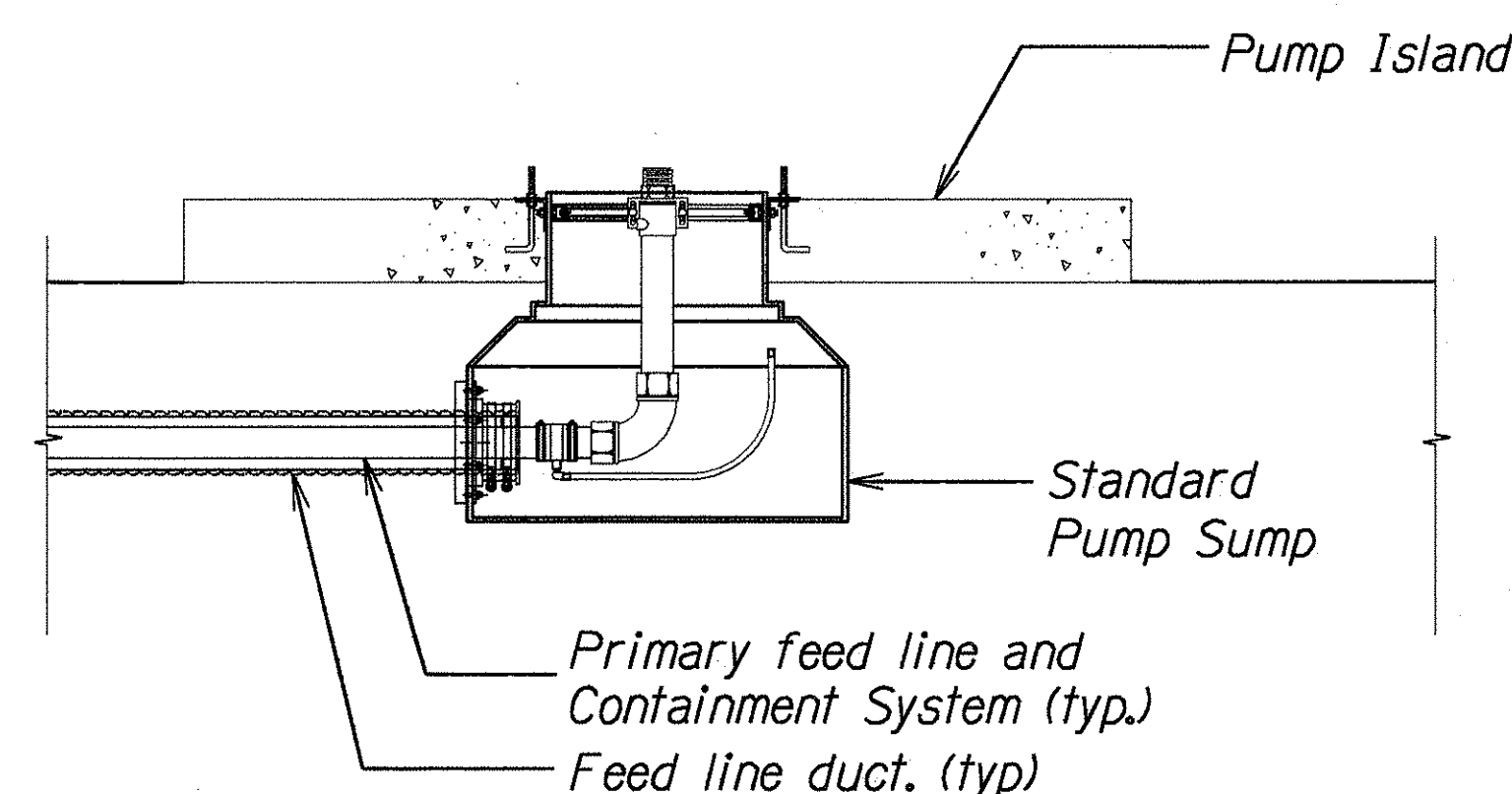


FED. ROAD DIST. NO.	STATE	PROJ. NO.	FISCAL YEAR	SHEET NO.	TOTAL SHEETS
HAWAII	HAW.	HWY-H-10-00M	2000	5	5



PUMP STATION ELEVATION  
Not to Scale



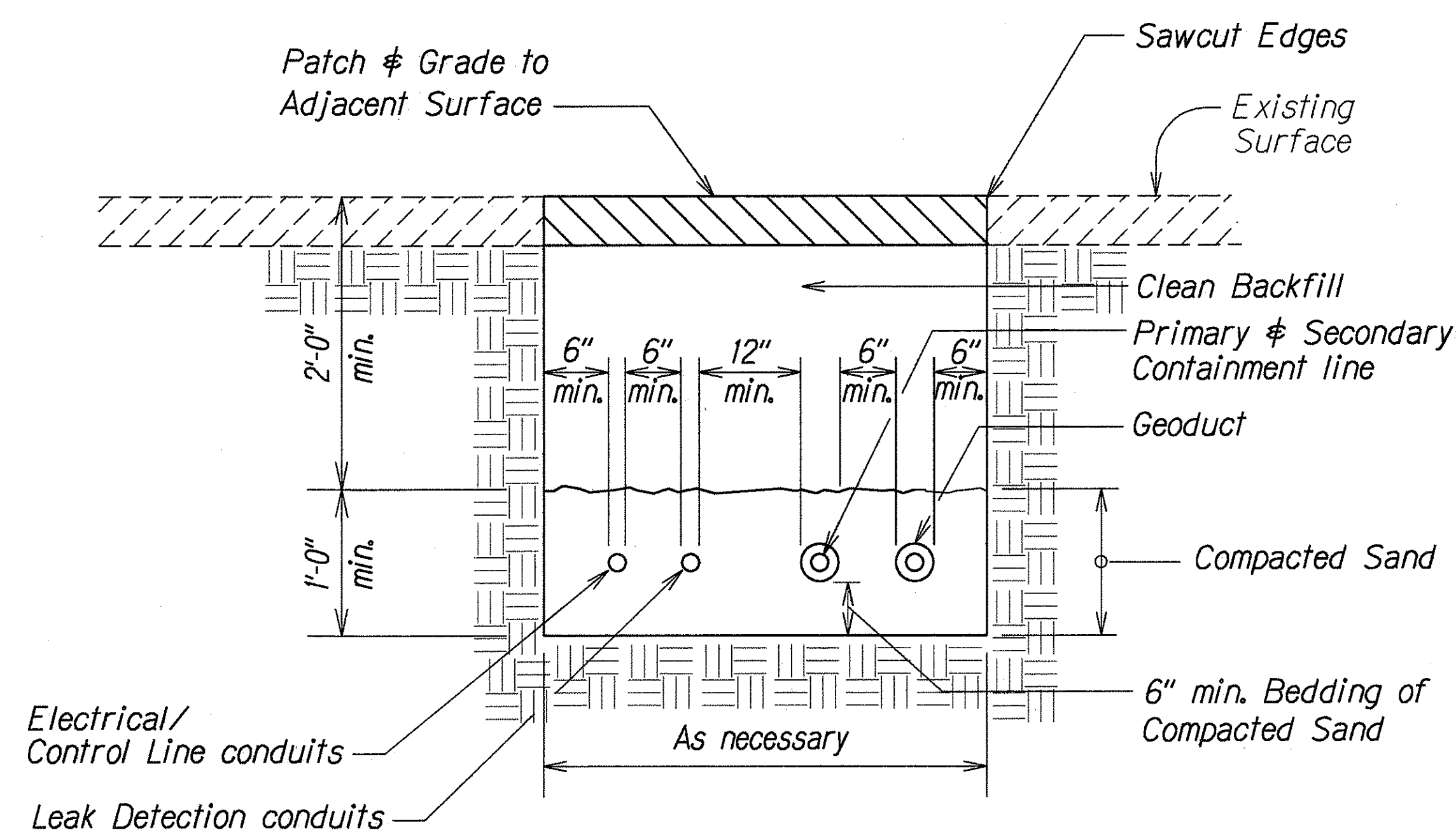
PUMP SUMP DETAIL  
Scale: None

**REMOVAL NOTES :**

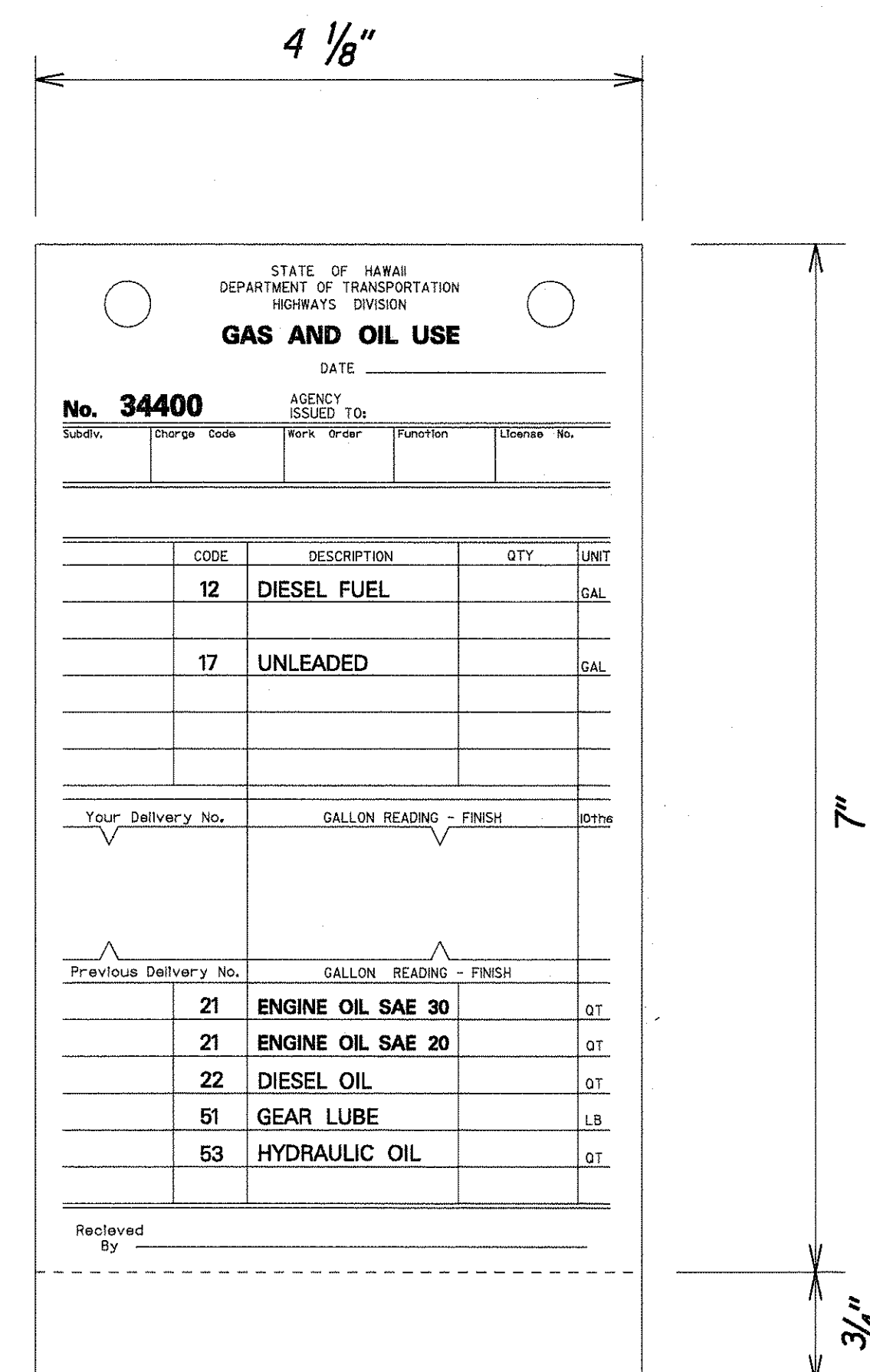
1. Remove and relocate items and equipment shown.
2. Remove existing piping. Perform all soil tests, excavations and removals according to all County, State and Federal Regulations and Guidelines.

### INSTALLATION NOTES :

1. Provide all equipment, material and labor for installing and testing the complete dispensing and ticketing systems, modify and install electrical conduit outlets at former dispensing locations to the new dispensers.
2. Installation shall comply with all applicable County, State and Federal regulations, guidelines and standards.
3. Fuel dispenser to be installed shall be: Bennet Fleetmaster Model 3924 Remote, Double Product, Twin Pump Station or equivalent. All dispensers to be equipped with ticket printing equipment. Service hoses to be 18' long (min.), U.L. listed and safety breakaway. Nozzels to be U.L. listed and automatic shutoff. All accessories and coupling hardware (Shear Valves, etc.) necessary for a complete installation shall be U.L. listed and included in this installation.
4. Ticket printing equipment shall be installed in conjunction with fuel dispensers and will be compatible with currently used tickets. (See this Sheet)
5. Fuel dispenser shall be installed on the existing pump island as shown on the plans. Pump connections and other necessary details shall conform to manufacturers recommendations.
6. All duct lines, fuel lines, and sumps to be products of the same manufacturer where ever possible.
7. Electrical installation shall conform to Specification 678 "Fuel Storage and Dispensing Systems."



**SECTION A-A**  
*Not to Scale*



FUEL TICKET  
Not to Scale

**NOTE :**

*Ticketing Equipment on new installations  
to use existing fuel ticket as shown.*

ORIGINAL DRAWN BY	SURVEY PLOTTED BY _____ DATE _____
NOTE BOOK <i>chmsand</i>	TRACED BY <i>X</i> _____
	DESIGNED BY <i>X</i> _____
	QUANTITIES BY _____
Checked by <i>dgn</i>	CHECKED BY _____

STATE OF HAWAII  
DEPARTMENT OF TRANSPORTATION  
HIGHWAYS DIVISION  
*DETAILS AND NOTES*

KA'U AND HONOKA'A BASEYARDS  
REPLACE FUEL PUMPS  
PROJECT NO. HWY-H-10-00M

Scale: As Noted Date: April, 2000

SHEET No. 1 OF 1 SHEETS