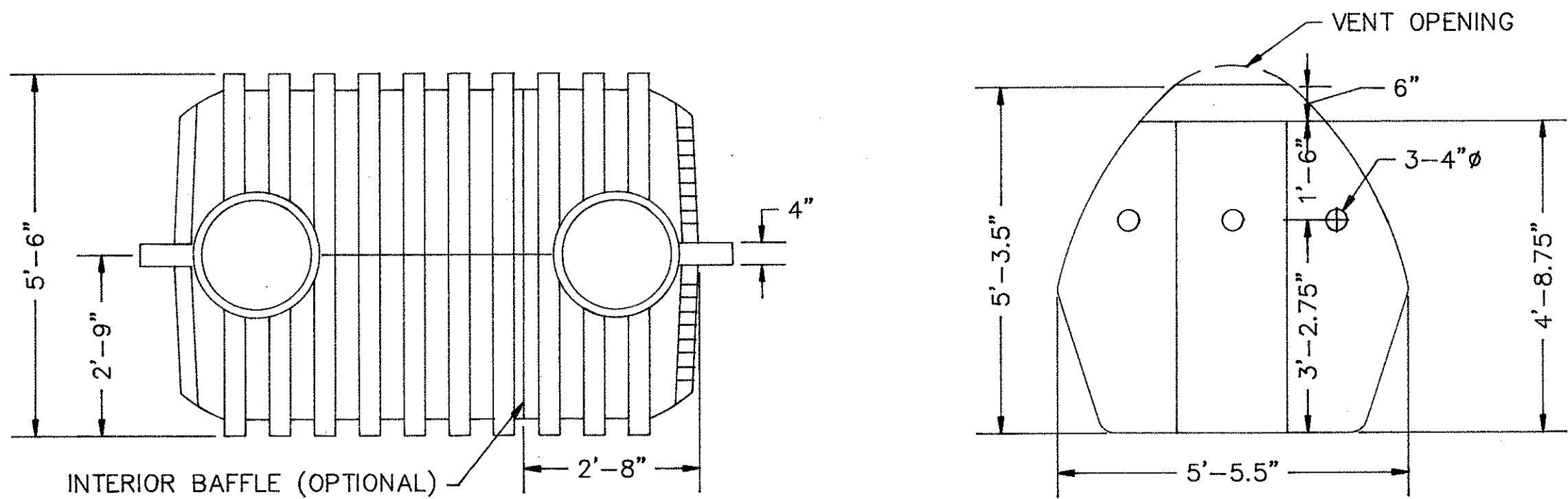
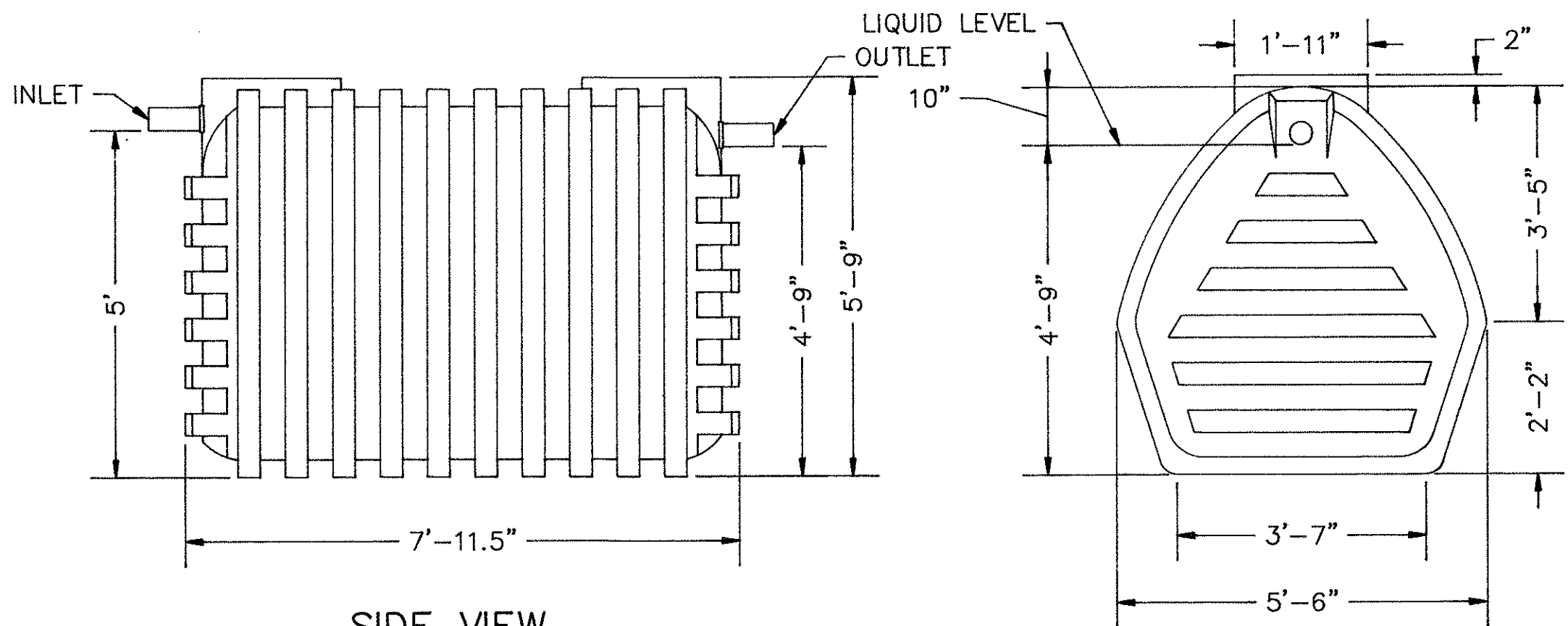


FED. ROAD DIST NO.	STATE	PROJ. NO.	FISCAL YEAR	SHEET NO.	TOTAL SHEETS
HAWAII	HAW.	HWY-H-03-00	2000	7	8



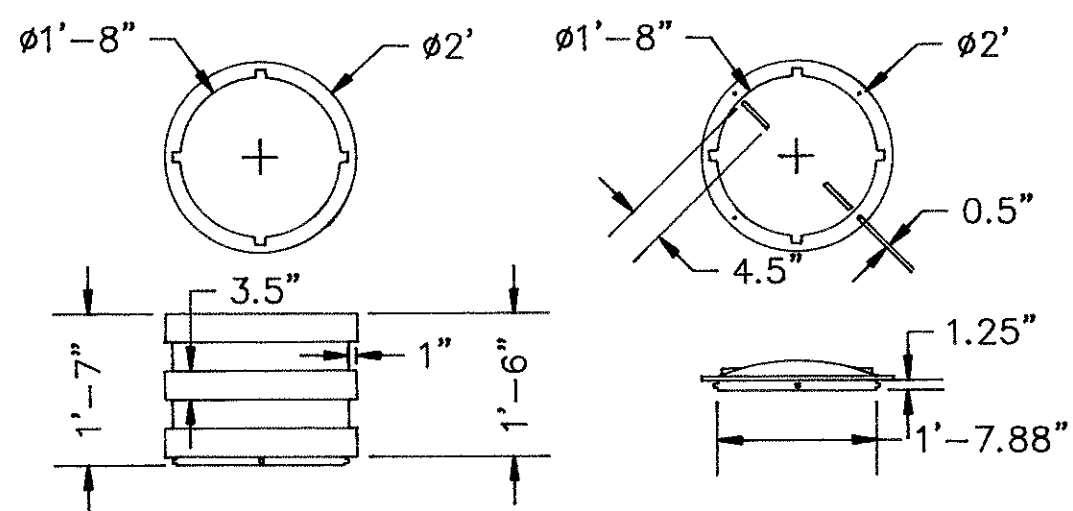
TOP VIEW

INTERIOR BAFFLE

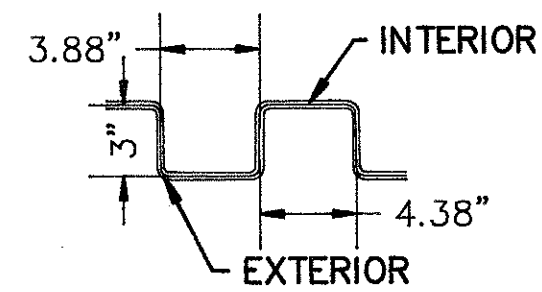


SIDE VIEW

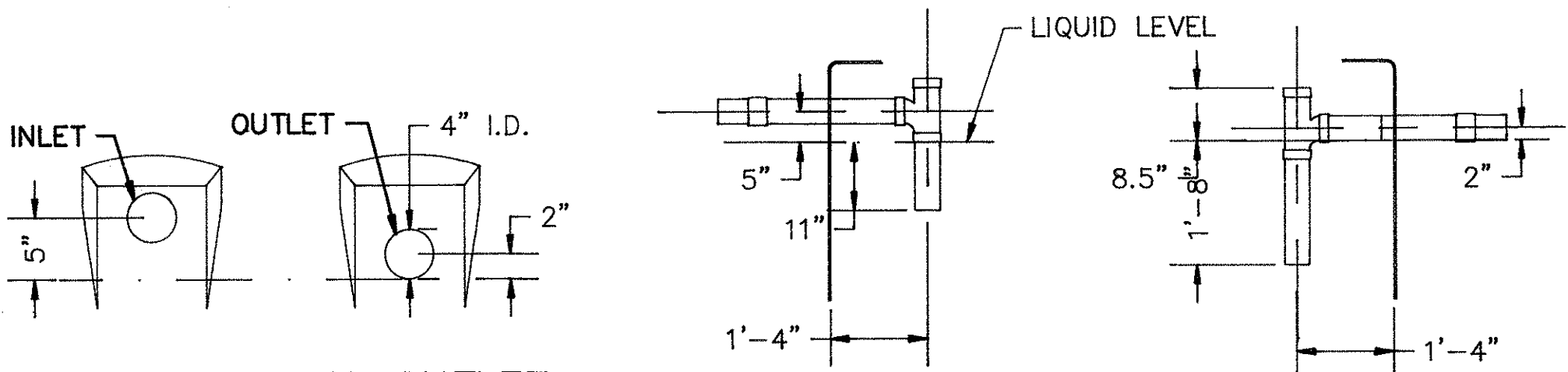
OUTLET END VIEW



MANHOLE EXTENSION AND COVER



RIB MEMBER



TANK INLET AND OUTLET

INLET AND OUTLET PIPING

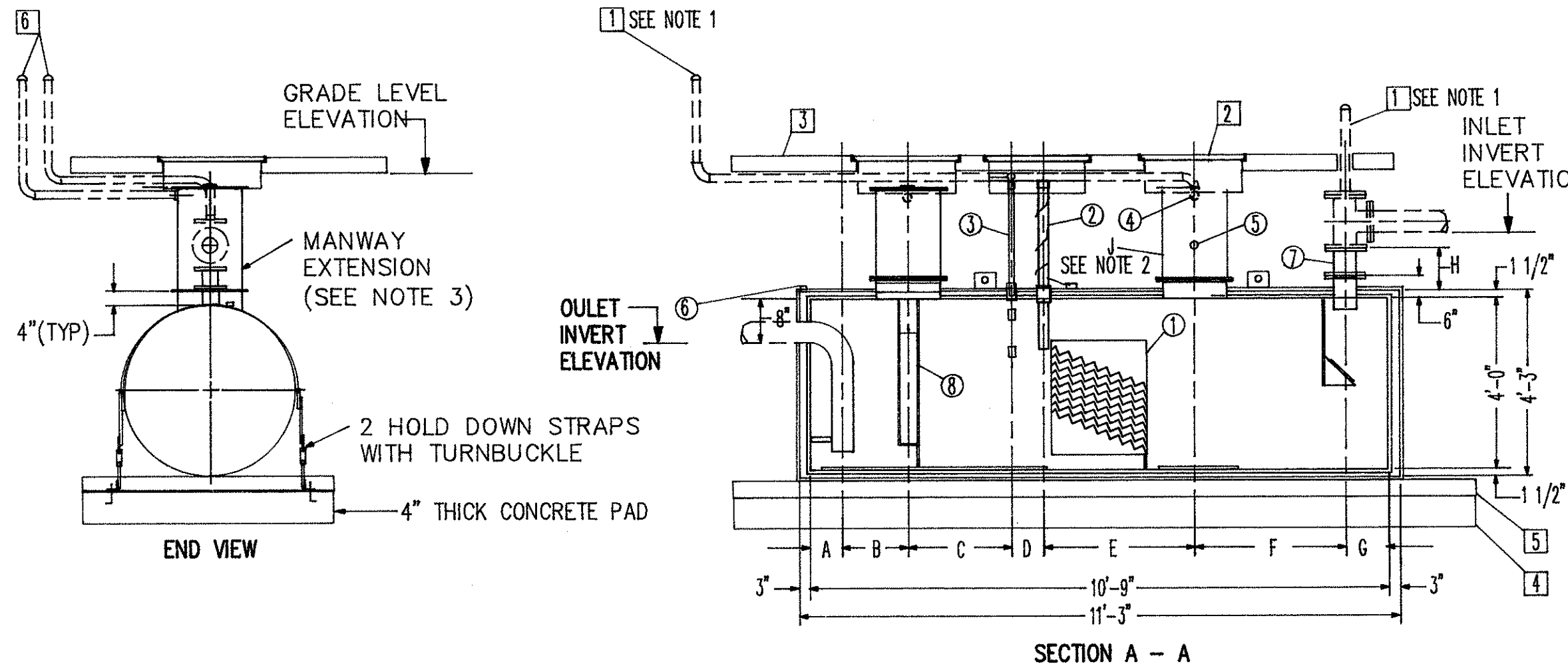
# 1000 GALLON POLYETHYLENE SEPTIC TANK

NTS

A

7

SURFACE PREP: SSPC NO. 6 BLAST ALL EXTERIOR SURFACES  
EXTERIOR COATING MATERIAL: COAT WITH FIBERGLASS  
REINFORCED POLYESTER; (100 MILS HEAD AND SHELL) PER  
ACT-100 SPEC.



PLAN VIEW

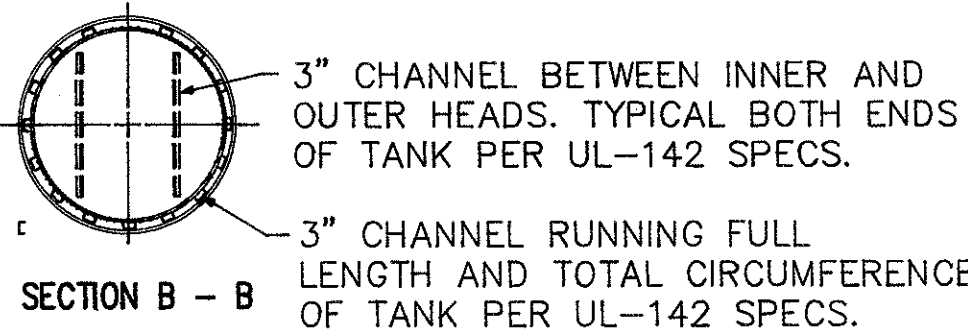
END VIEW

SECTION A - A

- STANDARD OIL WATER SEPARATOR EQUIPMENT
1. PARALLEL CORRUGATED PLATE COALESCER
  2. 4" DIA. OIL PUMP OUT PIPE WITH RISER PIPE
  3. 2" DIA. LEVEL SENSOR RISER PIPE
  4. 2" DIA. N.P.T. - FITTING FOR VENT - TYP. BOTH MANWAYS
  5. 2" DIA. N.P.T. - FITTING FOR SKIMMER
  6. 2" DIA. N.P.T. - FITTING FOR LEAK DETECTION
  7. ISOLATION SPOOL
  8. PETRO - SCREEN COALESCER PACKS

- CONTRACTOR SUPPLIED EQUIPMENT
1. VENT PIPING (SEE NOTE 1)
  2. GRADE-LEVEL MANWAY AND COVER
  3. GRADE-LEVEL CONCRETE HOLD-DOWN PAD
  4. CONCRETE BASE PAD
  5. 4" THICK BASE COURSE BEDDING MATERIAL

- GENERAL NOTES
1. VENT PIPING - INLET AND OUTLET MUST BE VENTED SEPARATELY; MANWAY VENT PIPING MAY BE MANIFOLDED TOGETHER
  2. STANDARD SIZE MANWAYS LISTED, LARGER SIZES AVAILABLE
  3. MANWAY EXTENSIONS VARY WITH SEPARATOR BURIAL DEPTH
  4. LEVEL SENSOR AND OIL PUMP OUT PIPES ON 1,000 GAL SEPARATOR ARE LOCATED ADJACENT TO EACH OTHER ACROSS THE DIAMETER OF THE TANK.



SECTION B - B

MODEL	TOTAL VOLUME	TOTAL SPILL CAPACITY	FLOW RATE	DIAMETER		LENGTH		INLET/OUTLET SIZE	A	B	C	D	E	F	G	H	I	J	K
HTC - 1,000	1,000	500	100	INNER TANK	OUTER TANK	INNER TANK	OUTER TANK	6"	9"	12"	19"	NOTE 4	41"	27"	12"	18"	12"	24"	2

## OIL WATER SEPARATOR

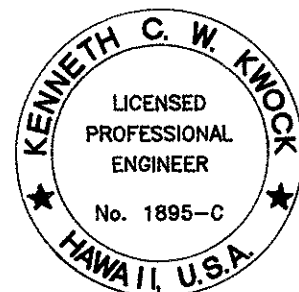
NTS

B

7

Notes:

1. Septic tank details shown are for tank manufactured by Chem-Tainer of Hawaii and is shown for illustrative purposes only. Actual model supplied by Contractor may vary in size and details. Contractor shall submit shop drawings for approval and shall be responsible to make any adjustments required.
2. Oil/water separator details shown are for unit manufactured by Highland Tank Company and is shown for illustrative purposes only. Actual model supplied by the Contractor may vary in size and details. Contractor shall submit shop drawings for approval and shall be responsible to make any adjustments required.



*Kenneth C. W. Knox*  
THIS WORK WAS PREPARED BY ME  
OR UNDER MY SUPERVISION.

STATE OF HAWAII  
DEPARTMENT OF TRANSPORTATION  
HIGHWAYS DIVISION

SEPTIC TANK AND OIL/WATER  
SEPARATOR DETAILS

HILO AND WAIMEA BASEYARDS  
WASTEWATER SYSTEM

PROJECT NO. HWY-H-03-00  
DATE

SHEET No. 7 OF 8 SHEETS