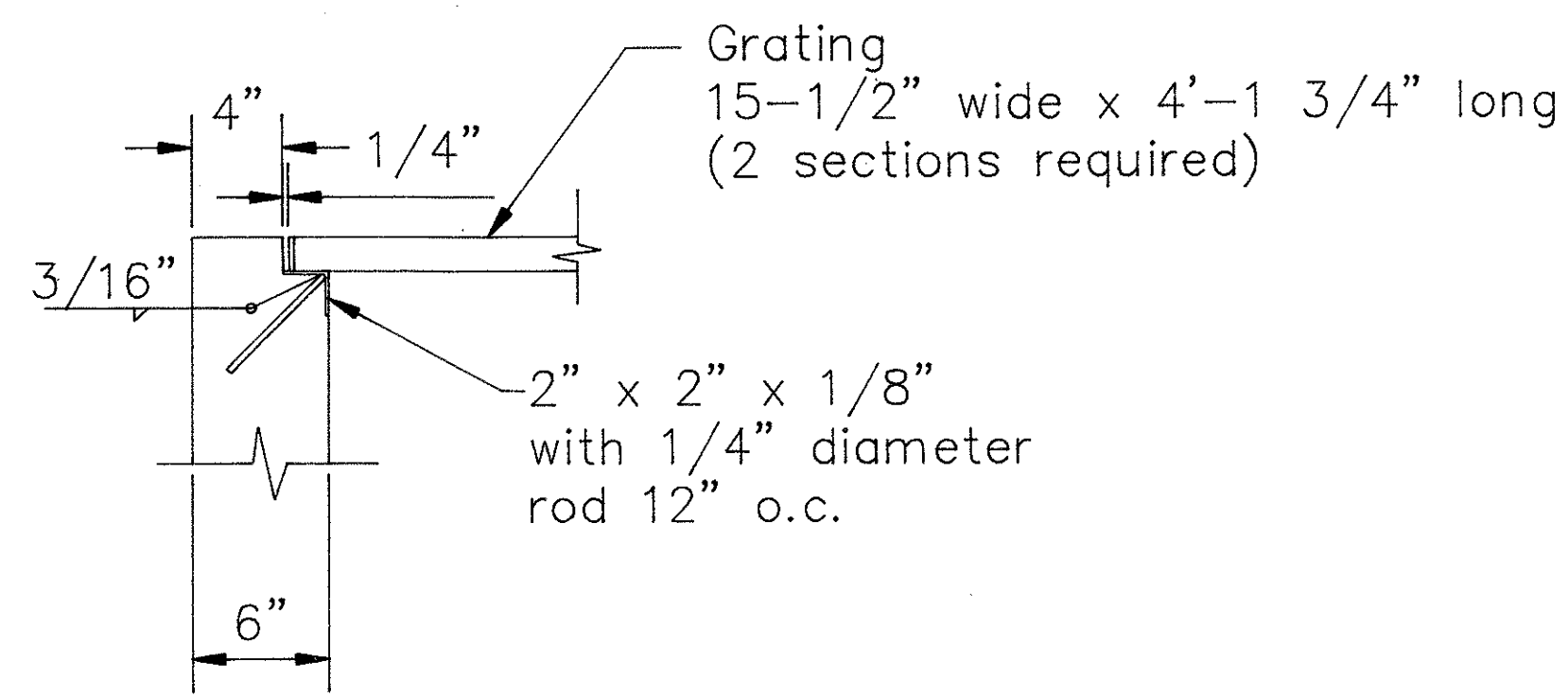
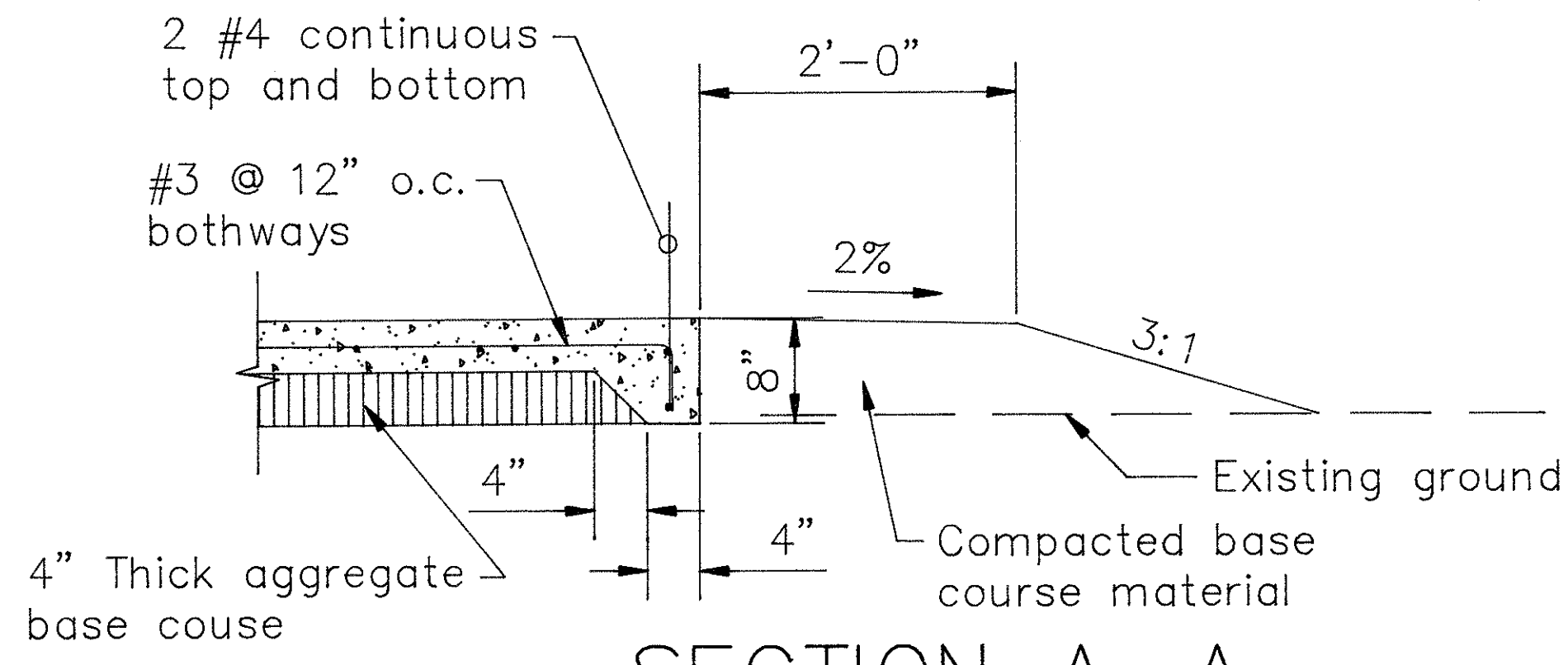


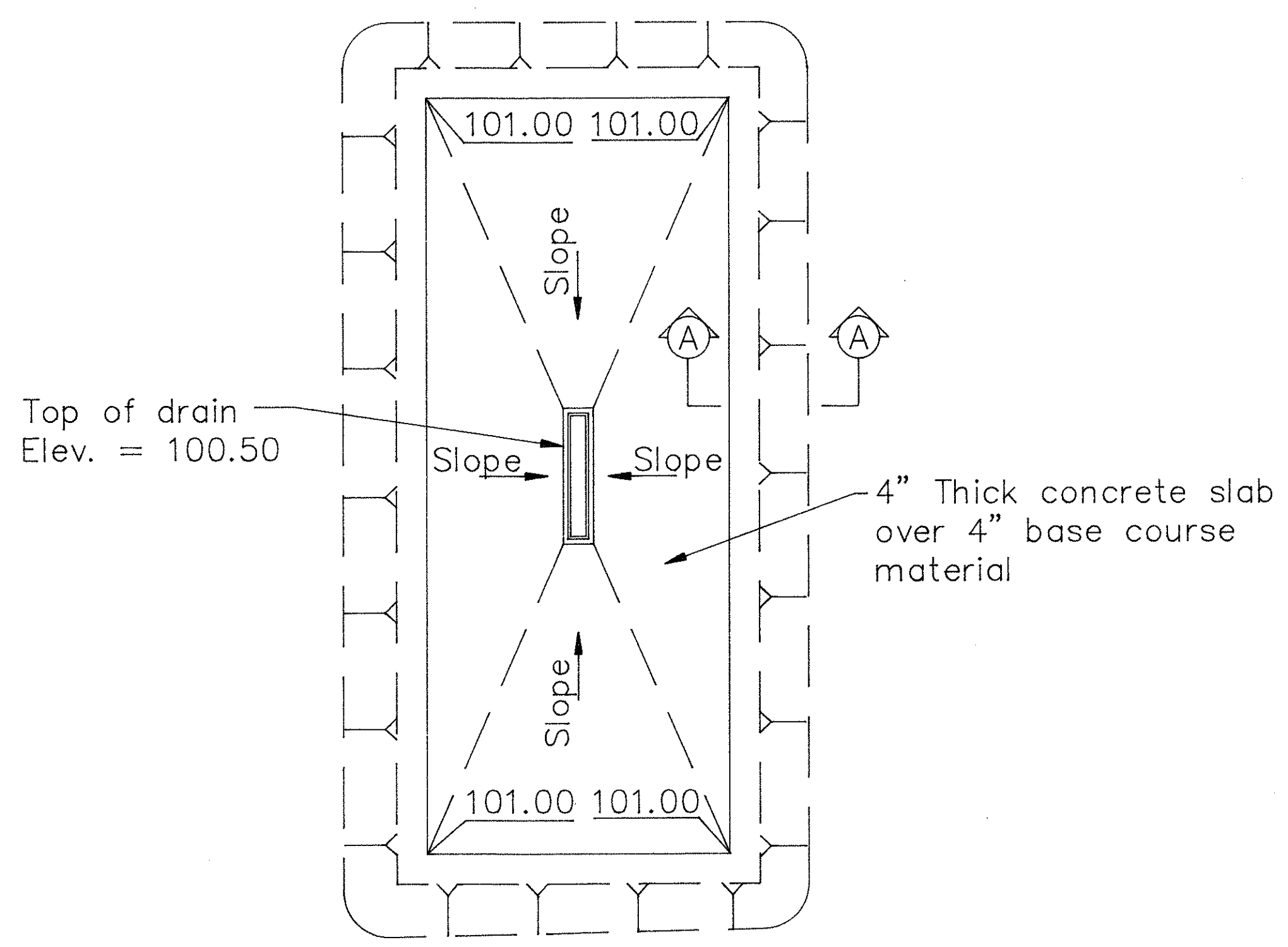
FED. ROAD DIST. NO.	STATE	PROJ. NO.	FISCAL YEAR	SHEET NO.	TOTAL SHEETS
HAWAII	HAW.	HWY-H-03-00	2000	4	8



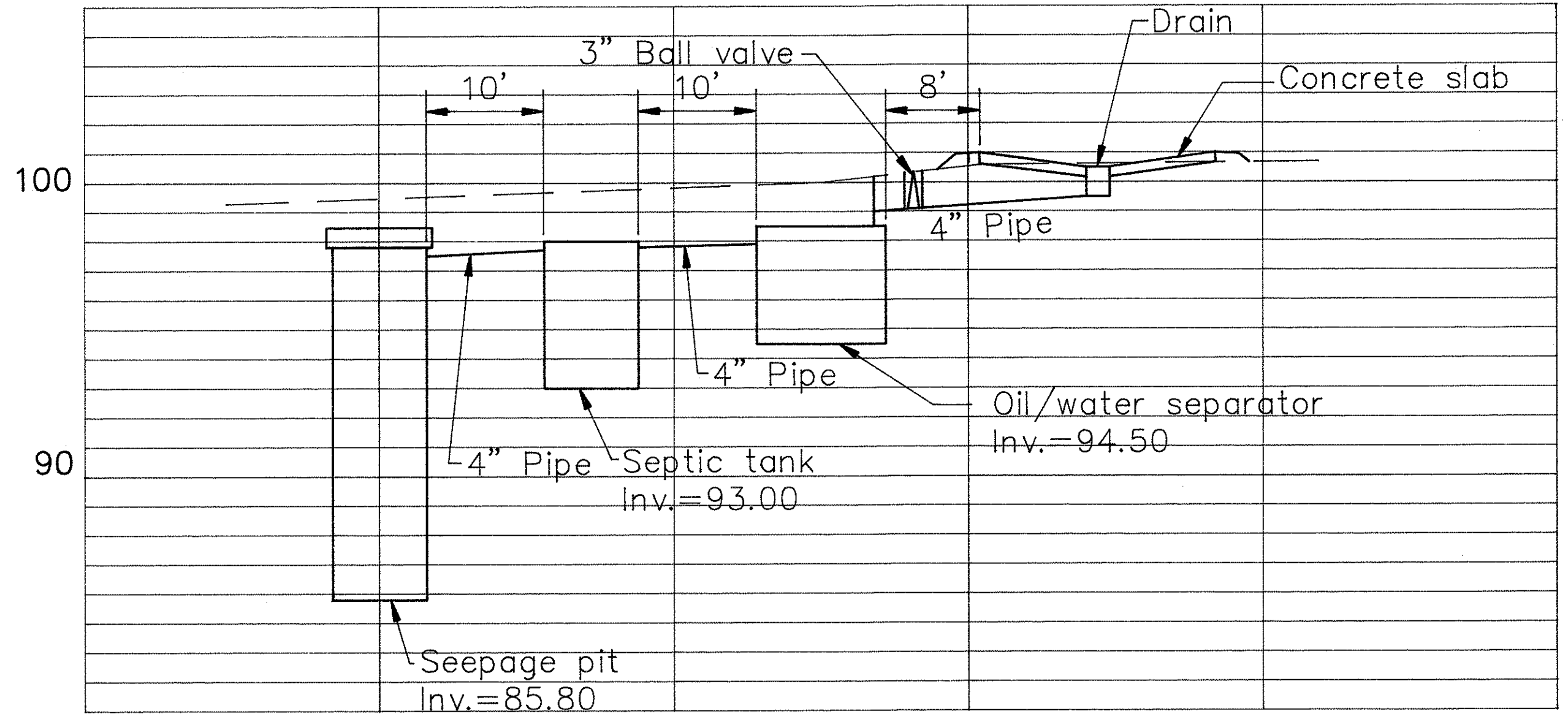
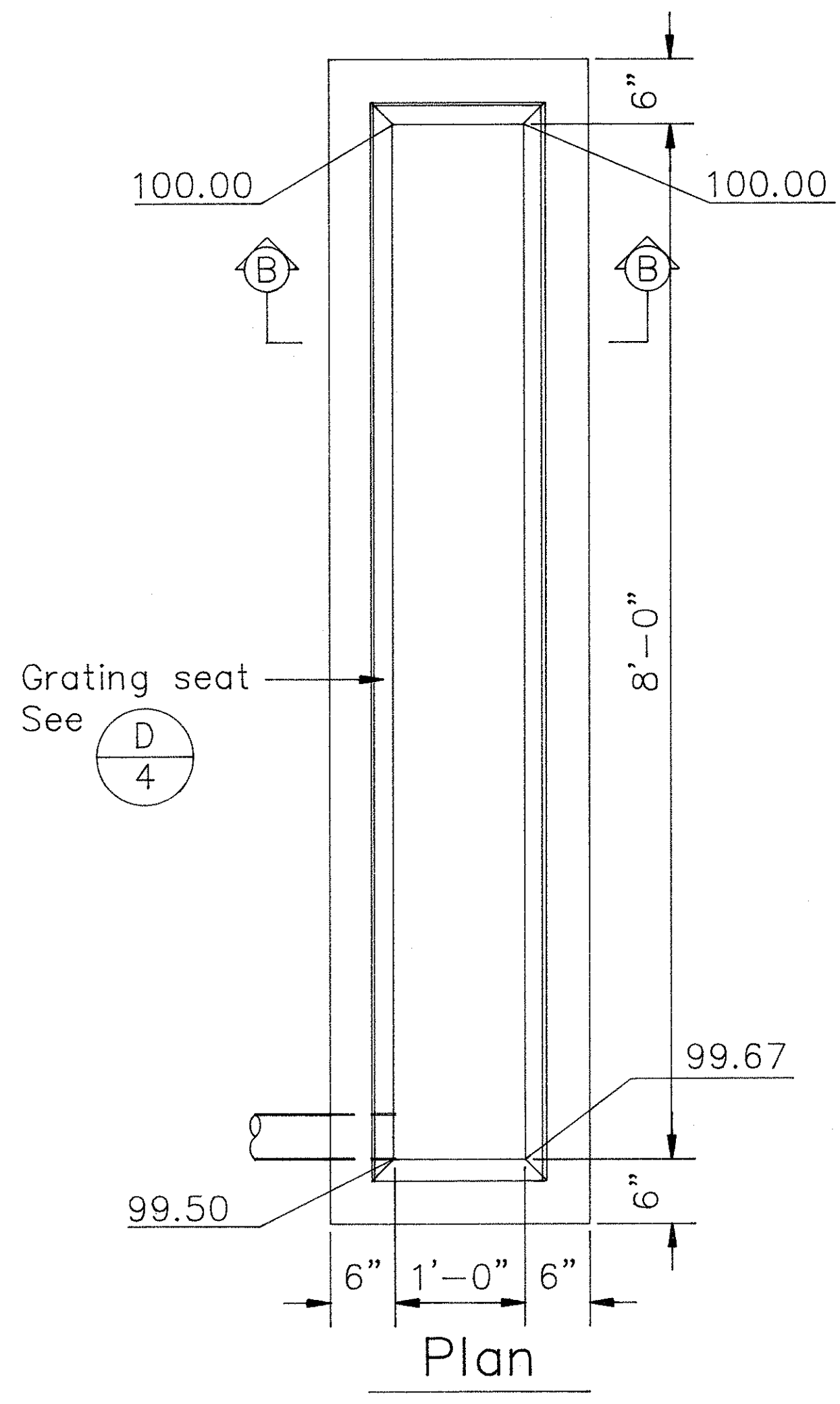
GRATING SEAT DETAIL (D/4)  
Scale: 1-1/2" = 1'-0"



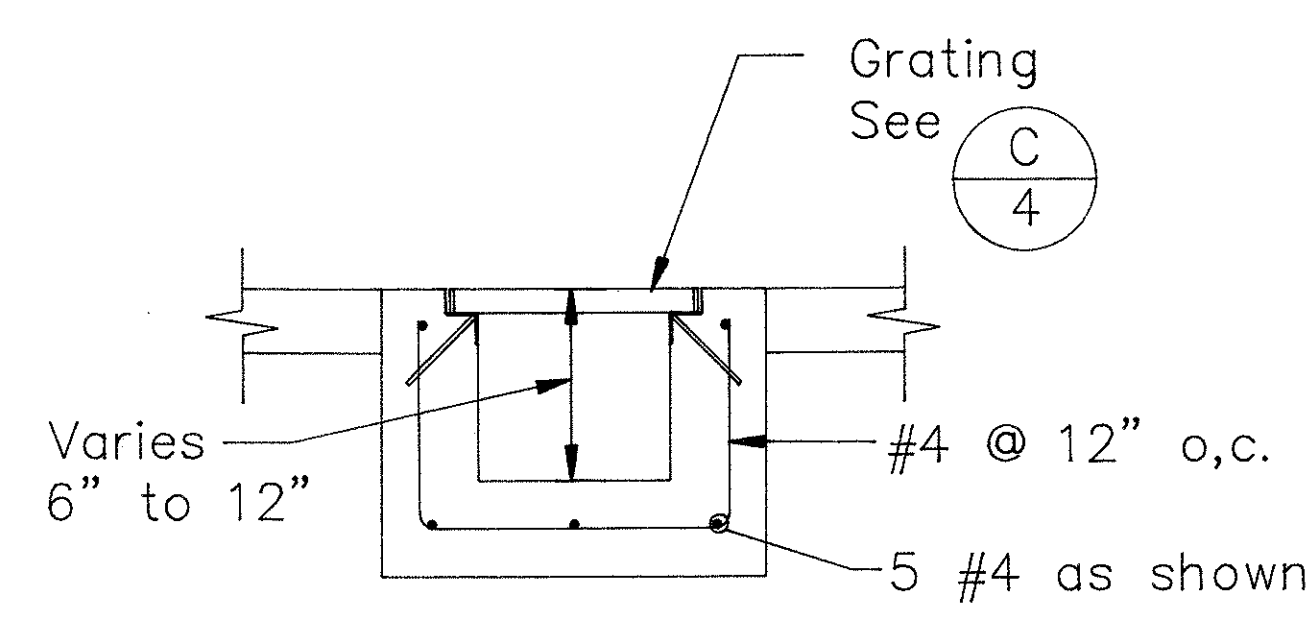
SECTION A-A  
Scale: 1" = 1'-0"



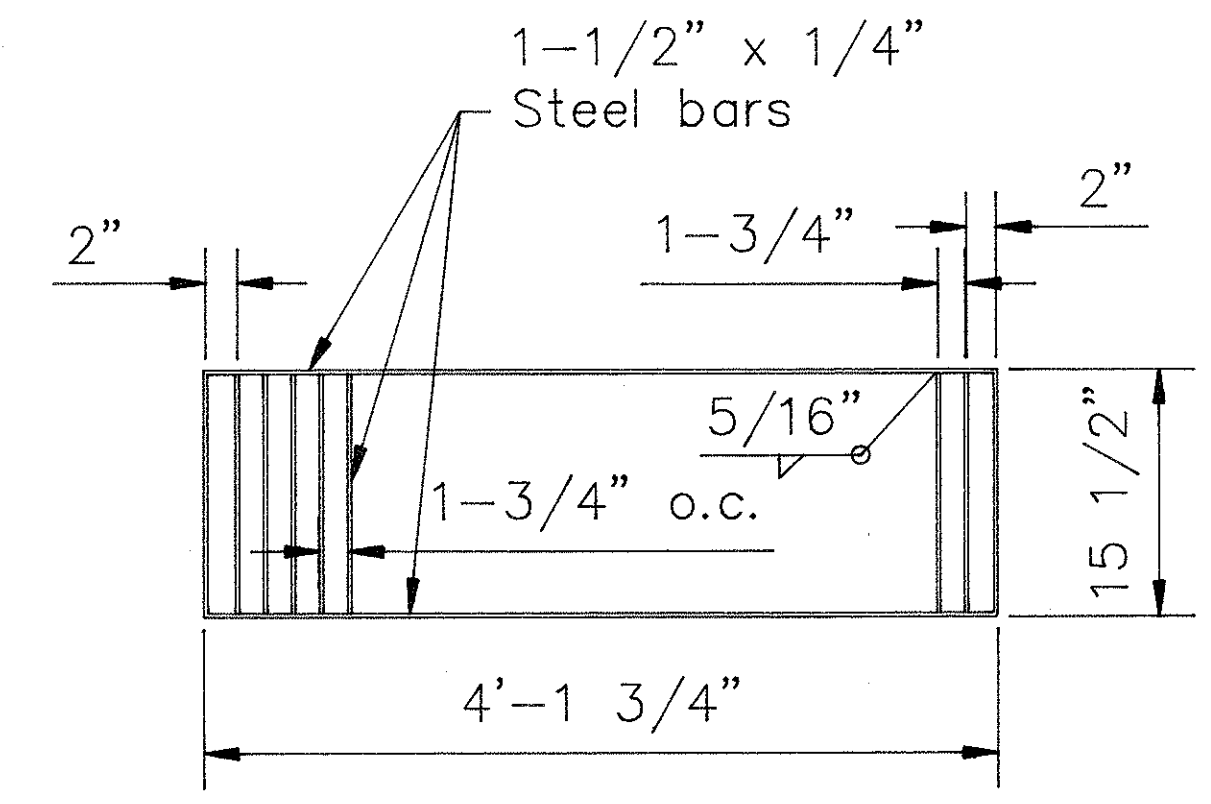
CONCRETE PAD PLAN (A/4)  
Scale: 1/8" = 1'-0"



SYSTEM PROFILE (E/4)  
Scale: 1" = 10' Horiz.  
1" = 4' Vert.

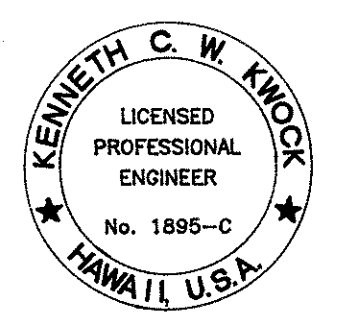


Section B-B  
DRAIN DETAIL (B/4)  
Scale: 1" = 1'-0"



- Notes:
- Two sections 15 1/2" x 4'-1 3/4" required
  - Grating and grating seat shall be hot dipped galvanized after fabrication.
  - All welds 5/16" unless otherwise noted.

GRATING DETAIL (C/4)  
Scale: 1" = 1'-0"



*Kenneth C. W. Knox*  
THIS WORK WAS PREPARED BY ME  
OR UNDER MY SUPERVISION.

STATE OF HAWAII  
DEPARTMENT OF TRANSPORTATION  
HIGHWAYS DIVISION

HILO BASEYARD DETAILS  
HILO AND WAIMEA BASEYARDS  
WASTEWATER SYSTEM  
PROJECT NO. HWY-H-03-00  
DATE:

SHEET No. 4 OF 8 SHEETS

DESIGNED BY	DATE
DRAWN BY	
CHECKED BY	
NOTED BY	
NO.	